



Weatherford®

Overseas Energy Holdings

Well : Westwood -1

Order No AU-DD-OEH-001

End of Well Report

Rig – Hunt Rig 3

Location – SEL5/2005 Tasmania

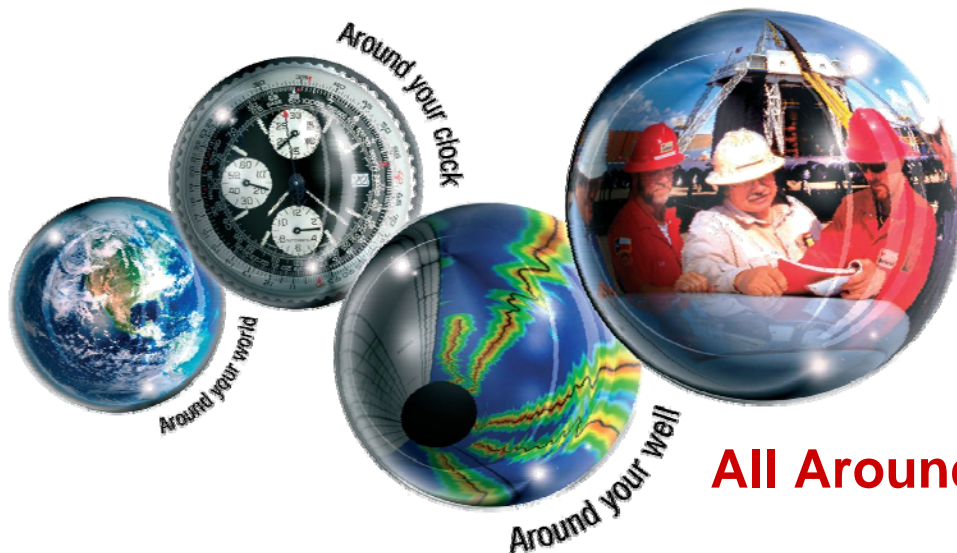
Start Date: December, 9, 2009

End Date: January, 4, 2010

Directional Drilling Engineer:

Dan Power

Ned Clark



All Around You

Table of Contents Page	Page
1. Health, Safety, and Environment	3
2. Well Specifications and Borehole Record	4
3. Weatherford Directional Drilling Services Provided	6
4. Job and Section Summaries	7
5. BHA Reports	10
6. Motor Run Summary Sheet	18
7. Drilling Parameter Sheets	20
8. Weatherford Directional & Performance Observations	23
9. Definitive Survey	24
10. Comparison Plot	29
11. Daily Activity Reports	30
12. Weatherford Personnel and Contact Information	54

1. Health, Safety, and Environment



Weatherford International is dedicated to continual safety awareness and improvement for all personnel. HSSE is Weatherford's outline for making the workplace safe to the benefit of employees, their families, clients, and shareholders. HSSE also encompasses Weatherford's commitment to protecting the environment in all actions performed by Weatherford personnel.

Weatherford employees will strive to seamlessly integrate Weatherford safety culture with the local policies of Hunt Energy and Mineral Co. Australia Pty Ltd and Overseas Energy Holdings. Participation in the SmartSTART program and instruction in the Permit-to-Work system are mandatory for all Weatherford employees working on Hunt Energy and Mineral Co. Australia Pty Ltd and Overseas Energy Holdings installments.

Weatherford personnel shall perform risk assessments for any task that could present a hazard. Previous information regarding root causes for incidents shall be used where possible to ensure the continual growth of the safety culture.

Job # AU-DD-OEH-001 Safety Statistics

<i>Classification</i>	<i>Number</i>	<i>Comments</i>
START Cards Submitted	9	
Safety Meetings / Permits Tool Box Talks	80	Arrival orientation, General Rig Safety, Emergency Drills, Pre tower meetings
Lost Time Accidents	0	
Lost Time Incidents	0	
Near Misses	0	
Sum of Weatherford Personnel Days on the Hunt Energy rig #3	87	Five employees working from 09DEC09- 04JAN10

2. Well Specifications

Job Number	AU-DD-OEH-001
Operator	Overseas Energy Holdings
Well Name	Westwood 1
Field	SEL5/2005
Location	Tasmania, Australia

Information Provided:

Surface Location	Geodetic Datum:	WGS 1984/ Zone 55S
	Latitude: 41° 31'	10.4" South
	Longitude: 147° 02'	03.7" East
	Northing:	5403564.163m
	Easting:	502867.011m
Magnetic Model	BGGM 2009	
Magnetic Field Strength	61544 nT	
Magnetic Dip Angle	-71.57°	
Magnetic Declination	13.96°	
Grid Convergence	-0.02°	
Total Correction	13.98°	
Magnetic Reference	Grid North	
Local Gravity	0.9996 g	

Well Profile	S Well
Well Type	Exploration
Spud Date	27 November 2009
Total Depth Date	01 January 2010
Permanent Datum	Mean Sea Level
Sea Floor	N/A
Depth Measured From	Drill Floor 149.0 m <i>above Permanent Datum</i>
Drilling Contractor	Hunt Energy and Mineral Co. Australia Pty Ltd
Rig Name	#3
Rig Type	Land Rig 450HP - Cantilever / Jackknife type mast and structure
Mud Pump Type	TSM 500 Duplex 6" x 16" slush pump
Number of Pumps	2
Dampener Type	Pump Mates 450-60 & Hydril K-10 Pulsation Dampener

Borehole Record

Hole Size	Start Depth (m)	End Depth (m)
17½" Surface Hole	0	104
12¼" Intermediate Hole	104	338
8½" Production Hole	338	1005
8½" Production Hole	1005	1326

Borehole Record (Sidetrack 1)

Hole Size	Start Depth (m)	End Depth (m)
8½" Production Hole	804	1679

Casing Record

Casing Size	Weight (kg/m)	Grade	Start Depth (m)	End Depth (m)
340 mm - 13.375"	81.1049	K-55	0	104
244 mm – 9.625"	53.5739	K-55	0	338

Mud Record

Mud Company: RMN Drilling Fluids

Mud Type	Mud Weight (sg)	Start Depth (m)	End Depth (m)
Gel Spud Mud	8.5 - 8.8	0	104
NaCl PHPA Polymer	8.5 - 9.2	104	338
NaCl PHPA Polymer	8.8 - 9.4	338	1679

3. Weatherford Directional Drilling Services Provided

1. Motors for Performance drilling
2. Stabilizers for Direction Control
3. Non Magnetic Drill Collars for MWD Tool Spacing & EMS Spacing
4. Precision Pulse MWD Tool (CDS)

4. Job Summary

On December 9th, 2009 Weatherford MWD began providing directional only services on the Hunt Energy and Mineral Co. Australia Pty Ltd rig #3 for Overseas Energy Holdings.

Westwood 1 is an exploration well located in the southern portion of Exploration License SEL5/2005 in the north-eastern portion of the Longford Sub basin. The Westwood-1 well site is located approximately 12.5km south-west of Launceston, approximately 2.5km east of the town of Carrick off the Bass Highway alongside Westwood Road. The well site is located on the 'Meanda Rise' property of Mr. W Walker (on the 'Junction Farm' property of Mr. G W Mayes & Ms N A Powers).

An initial target tolerance of 100m radius had been specified for the well. Later this was modified by Overseas Energy Holdings.

The 6.75 inch Weatherford PP-MWD tool was used for the 8.5 inch hole from 1005m to 1326 m. The well was cemented back to 804m and was then sidetracked to 1679m. During the drilling of both sections, Real Time Tool Face, and Surveys on demand were provided. All depths are referenced to measured depth (MD) unless otherwise noted.

After logging the well was considered not commercially viable and was plugged and suspended on 3rd January 2010.

Highlights:

1. No recordable or lost time incidents during the period that Weatherford personnel were on the Well.
2. Surveys were taken during connections with minimum time lost.

Disappointments:

1. None. The tools performed as expected for the entirety of the well.

Recommendations for Improvement:

1. Use of 30 degree pulser orifice to overcome signal detection issues associated with rig duplex pumps.
2. Rig pump selection to allow for greater flow rates.
3. Future exploration wells in this region would benefit from LWD tools which include vibration sensors, and azimuthal gamma or similar.

Section Summaries

Overseas Energy Holdings
Westwood 1
Hunt Energy – Rig #3

DIRECTIONAL DRILLING ANALYSIS:

When we first arrived on site the well had been drilled to a depth of 1005m and they had surveyed it with single shot magnetic instruments. The hole had 15 degrees and we were advised that they wanted to be at zero degrees at approx. 1600m with the target centre approx. 15m west of our present position. The client wanted us to try and spiral the well down to 0 degrees around the centre, I advised that this would probably be a very difficult situation and could be quite costly. As the angle in the hole was attained fairly quickly, we advised that surveying back to bottom with the MWD would give us a much more accurate survey. It was agreed that instead of trying to spiral the well we would try and zigzag down either side of the centre line to give the required target exposure for logging.

Directional control from 1005m to 1173m was fairly positive and we managed to drop and turn from 30.28 azimuth to 291 azimuth and drop to 7.5 inc but from here on, even though we were steering at 180 degrees from hole direction for up to 9m, the angle increased and the direction was very reluctant to turn. The best we could get was 264.74az and we needed to get the direction around to 180az just to reach the target, at 1326m I advised the client that to attempt to reach this target from this depth we will be running the rig to very near its capacity and could risk leaving equipment down the hole. It was decided that a sidetrack was the safest and easiest way.

Sidetrack # 1.

The cement plug was set between 888m and 788m. After 8 hours the cement assembly was put on top of cement and an attempt was made to hole 10000lb on it. Assembly was laid down and we ran in with BHA 5 and a new bit. After approx. 18 hours the cement was still not very solid, and we could not maintain any weight on it for longer than a few seconds. The top of the cement was found at 821m and we tried to sidetrack to 849m carrying 5-7000lb, but there was no indication that we were encountering any formation. I decided to attempt to time drill from 849m, a survey at 851m indicated we had turned the well to the north and dropped 1 degree, but the samples were being contaminated with cement, and the samples of formation were not clear until 869m. I rotated from 877m to 906m to confirm sidetrack successful. Inclination was building in rotation so began sliding to knock down Inc. We were successful in dropping Inc to 3.78 degrees at 936m. Inc continued to build with rotation to 7.45 degrees at 1003m, sliding reduced Inc to 3.12 then began to build with rotation. Dan Power arrived on site on the 19th. We POOH at 1121m after pressure spikes motor on way out bearing measured at 5.2mm.

After consultation with the client representative Tim Franklin it was decided to use low angle in the hole and slowly spiral about its axis. This action will keep us within 7m of target. If the client changes the target depth we should be in a position to build angle quickly and attain the target centre. Bob Fleming left site on the 22nd.

A depth correction was made of -10m as it was discovered when POOH that a collar had not been added to previous BHA. Hole depth was corrected to 1112m. Inc angle had been building quickly with previous BHA so I began sliding to counteract this from 1112m -1154m reaming each Kelly twice. I succeeded in dropping the angle to 1.58 degrees and then began rotating

continuing to ream. Angle began to build again in rotation and continued trend to West. By sliding I managed to drop the angle out of well by 1250m but it turned to the South. Torque was rising in rotation and when reaming. In rotation this time the angle dropped but again pulled towards the west. I managed to flip the hole underneath itself and turned it east and began to build angle to 6.12 degrees from 1340-1371m. We then had to POOH at 1389m for MWD problems.

Ned Clark arrived on site PM on the 26th. When MWD reached the surface we experienced problems taking out the grub screw from the Orientation sub for MWD tool. RIH with BHA 7 and new DD Ned Clark began to slide to the left to centre of target. This action resulted in an initial 67 degree swing in azimuth in 3 kelly's, confirming the previous trend of the hole pulling hard to the left or west. We then attempted to drop the inclination by steering down but failed. The well also continued to swing to the left as we steered right. At this point MWD problems were experienced and we could not get a reliable toolface, the decision was made to POOH. After consultation with client, company man Lou De Vattimo and the Weatherford office in Perth the decision was made to dial down the motor to 1.15 bend and drop the roller reamer out of the BHA this did reduce torque but did not help us at all with our steering ability.

The angle of the well continued to build from 6.59-14.16 degrees and the azimuth continued to hold in the 280-270 degree range. At this point after detailed discussion between the client representative Tim Franklin, Lou De Vattimo and the Weatherford office in Perth, a decision was made to dial the motor back up to the original setting of 1.5 and drop out the string stabilizer. The target was again moved by the client and a new target was given anywhere to the left side of the original target point. This slick assembly did enable us to turn very sharply to the right but meant we could not ream or rotate due to excessive doglegs. Ned Clark leaves site 7pm on the 31st. We continued until an MWD survey was taken over the new target line and the client confirmed TD. After two days on standby the decision was made by the client to plug and suspend the well with the possibility it may be sidetracked in the future.

Formation Characteristics

The formation had fissile and sub fissile shaly siltstone and subordinate hard sandstone. Formation when drilled had a tendency to pull to the left and build angle. Three separate formation horizons were mapped on the same track in a comparison between initial and sidetrack wells suggesting a 10 degree dip to the west. Hard bands of quartzite were layered through 70% Siltstone, 5% Silty Sandstone, 5% Limestone, 20% Sandstone. The hardness of the formation may have contributed in part to our MWD problems as the bit damage on our last three BHA's suggested severe vibration and bouncing. Les Burgess the contract geologist on site described the scenario as trying to drill against a pane of glass and continually sliding or bouncing up and to the left.

5. BHA Reports



Weatherford®

BHA Report BHA 2 - Drop & Hold Section

Drilling Services
V4.2.26/5

FILE #: 1010101 WELL NAME: Westwood # 1 SERVICE CO.: Precision Energy Services
JOB TYPE: COMPANY: Overseas Energy Holdings SURVEY TYPE:
RIG & NO: Hunt Energy 3 SURFACE LOCATION: Haspden FIELD / LOCATION: Westwood / Tasmania / Australia

DIR Supervisor: Bob Fleming
MWD Supervisor: Olive Pickering, Faheem Khan

BHA SURVEY TYPE: Positive Pulse MWD HOLE SIZE: 8.5

QTY	COMPONENT	MANFCT.	SERIAL #	MODEL	O.D.	I.D.	F.N.	BOT. CONN.	TOP CONN.	LEN.	C.LEN.
1	Tri-Cone Bit	Security	10895631	EBXS20DSD	8.5	0	0		4 1/2" REG Pin	0.28	0.28
1	Drilling Motor	PES	675-3186		6.75	0	0	4 1/2" REG Box	4 1/2" IF Box	8.33	8.61
1	mule shoe	PES	675-17990		6.75	0	0	4 1/2" IF Pin	4 1/2" IF Box	1.06	9.67
1	Short NMDC	PES	675-23450		6.75	2.75	0	4 1/2" IF Pin	4 1/2" IF Box	3.80	13.47
1	Short NMDC	PES	675-23449		6.75	2.75	0	4 1/2" IF Pin	4 1/2" IF Box	3.90	17.37
1	NMDC	PES	675-21270		6.75	3.25	0	4 1/2" IF Pin	4 1/2" IF Box	9.48	26.85
1	X/O Sub	Rig			6.58	2.88	0	4 1/2" IF Pin	4" IF Box	0.60	27.45
1	18 x Drill Collar	Rig			0	0	0			168.65	194.10
1	Jar				6.5	2.75	0	4" IF Pin	4" IF Box	9.06	203.16
2	2 X Drill Collar	Rig			6.25	2.878	0	4" IF Pin	4" IF Box	18.17	221.33
1	6 x HWDP	Rig			6.25	2.878	0	4" IF Pin	4" IF Box	54.97	276.30

(O.D. units are ; I.D. units are ; F.Nook units are)

— GENERAL INFORMATION —

DATES RUN: 2009/12/11 TO 2009/12/14
DEPTH IN: 0.00 ANGLE IN: 0.00
DEPTH OUT: 1073.00 ANGLE OUT: 0.00
DRILL HRS: 20.25 BUILD: 0.00
ORIENTING HRS: 7.00 HOLE MADE: 1073.00
ROTATING HRS: 13.25 AVG R.O.P.: 52.99

— MOTOR INFORMATION —

MANFCT. PES SETTING: 1.50
SERIAL #: 675-3186 KICK PAD: No
MODEL: STABILIZER: 8 3/8" (213mm)
LOBE CFG: 6/7 MOTOR HRS: 20.25
BIT TO BEND: 0

— PUMP INFORMATION —

PUMPS	PUMP 1	PUMP 2	PUMP 3	MUD TYPE: Polymer	LIQUID BASE: Water
EFFICIENCY:	1.0%	100.0%	100.0%	DENSITY: 9.2	TEMP: 0
S.P.M.:	0	58	0	VISCOSITY: 40	pH: 9
STROKE VOLUME:	0.0	6.79	0.0	WTR LOSS: 1	SAND: 0 LIQUID RATE: 0
TOTAL FLOW RATE:	393.82			PLAST VISC: 12	SOLIDS: 0 GAS TYPE:
PUMP PRESSURE:	OFF BTM: 1200	ON BTM: 1350		YIELD PT: 17	OIL: 0 GAS RATE: 0

— BIT INFORMATION —

MANFCT: Security TYPE: EBXS20DSD ADC BIT GRADE: 1 / 1 / NO / A / E / 1 / NO / DTF
NOZZLES: 0.746 TFA

— REASON FOR BHA CHANGE —

MWD failure

— FORMATION CHARACTERISTICS —

10% Siltstone, 10-15% Sandstone, 75% Conglomerate.

— MWD COMMENTS —

MWD tool could not give TF or Survey.





Weatherford®

BHA Report

BHA 3 - Drop and Hold Section

Drilling Services

V4.2.26/5

FILE #: 1010101
JOB TYPE:
RIG & NO: Hunt Energy 3

WELL NAME: Westwood # 1
COMPANY: Overseas Energy Holdings
SURFACE LOCATION: Haspden

SERVICE CO.: Precision Energy Services
SURVEY TYPE:
FIELD / LOCATION: Westwood / Tasmania / Australia

DIR Supervisor: Bob Fleming
MWD Supervisor: Clive Pickering, Faheem Khan

BHA SURVEY TYPE: Positive Pulse MWD

HOLE SIZE: 8.5

QTY	COMPONENT	MANFCT.	SERIAL #	MODEL	O.D.	I.D.	F.N.	BOT. CONN.	TOP CONN.	LEN.	C.LEN.
1	Tri-Cone Bit	Security	10895631	EBXS20DSD	8.5	0	0		4 1/2" REG Pin	0.28	0.28
1	Drilling Motor	PES	675-3186		6.75	0	0	4 1/2" REG Box	4 1/2" IF Box	8.33	8.61
1	mule shoe	PES	675-17990		6.75	0	0	4 1/2" IF Pin	4 1/2" IF Box	1.06	9.67
1	Short NMDC	PES	675-23450		6.75	2.75	0	4 1/2" IF Pin	4 1/2" IF Box	3.80	13.47
1	Short NMDC	PES	675-23449		6.75	2.75	0	4 1/2" IF Pin	4 1/2" IF Box	3.90	17.37
1	NMDC	PES	675-21270		6.75	3.25	0	4 1/2" IF Pin	4 1/2" IF Box	9.48	26.85
1	X/O Sub	Rig			6.58	2.88	0	4 1/2" IF Pin	4" IF Box	0.60	27.45
1	18 x Drill Collar	Rig			0	0	0			166.65	194.10
1	Jar				6.5	2.75	0	4" IF Pin	4" IF Box	9.06	203.16
2	2 X Drill Collar	Rig			6.25	2.878	0	4" IF Pin	4" IF Box	18.17	221.33
1	6 x HWDP	Rig			6.25	2.878	0	4" IF Pin	4" IF Box	54.97	276.30

(O.D. units are ; I.D. units are ; F.Neck units are)

— GENERAL INFORMATION —

DATES RUN: 2009/12/14 TO 2009/12/16
DEPTH IN: 1073.00 ANGLE IN: 0.00
DEPTH OUT: 1246.00 ANGLE OUT: 0.00
DRILL HRS: 33.50 BUILD: 0.00
ORIENTING HRS: 10.00 HOLE MADE: 173.00
ROTATING HRS: 23.50 AVG R.O.P.: 5.16

— MOTOR INFORMATION —

MANFCT. PES
SERIAL #: 675-3186
MODEL:
LOBE CFG: 6/7
BIT TO BEND: 0
SETTING: 1.50
KICK PAD: No
STABILIZER: 8 3/8" (213mm)
MOTOR HRS: 34.00

— PUMP INFORMATION —

PUMPS	PUMP 1	PUMP 2	PUMP 3
EFFICIENCY:	1.0%	100.0%	100.0%
S.P.M.:	0	58	0
STROKE VOLUME:	6.78	6.78	0.0
TOTAL FLOW RATE:	393.24		
PUMP PRESSURE:	OFF BTM: 1250	ON BTM: 1400	

— MUD INFORMATION —

MUD TYPE: Polymer
LIQUID BASE: Water
DENSITY: 9.2
TEMP: 0
VISCOSITY: 38
pH: 8.5
WTR LOSS: 7.8
SAND: 0.25 LIQUID RATE: 0
PLAST VISC: 10
SOLIDS: 5.9 GAS TYPE:
YIELD PT: 10
OIL: 0 GAS RATE: 0

— BIT INFORMATION —

MANFCT: Security TYPE: EBXS20DSD ADC BIT GRADE: 3 / 3 / BT / G / E / I / CT / TQ
NOZZLES: 0.746 TFA

— REASON FOR BHA CHANGE —

Pulled for bit.

— FORMATION CHARACTERISTICS —

60% Siltstone, 15% Silty Sandstone, 5% Limestone, 20% Sandstone.

— MWD COMMENTS —

MWD performed well.





Weatherford®

BHA Report

BHA 4 - Drop & Hold Section

Drilling Services

V4.2.28/5

FILE #: 1010101
JOB TYPE:
RIG & NO: Hunt Energy 3

WELL NAME: Westwood # 1
COMPANY: Overseas Energy Holdings
SURFACE LOCATION: Haspden

SERVICE CO.: Precision Energy Services
SURVEY TYPE:
FIELD / LOCATION: Westwood / Tasmania / Australia

DIR Supervisor: Bob Fleming
MWD Supervisor: Clive Pickering, Faheem Khan

BHA SURVEY TYPE: Positive Pulse MWD HOLE SIZE: 8.5

QTY	COMPONENT	MANFCT.	SERIAL #	MODEL	O.D.	I.D.	F.N.	BOT. CONN.	TOP CONN.	LEN.	C.LEN.
1	Tri-Cone Bit	Reed	ADB201	R30APDH	8.5	0	0		4 1/2" REG Pin	0.28	0.28
1	Drilling Motor	PES	675-3196		6.75	0	0	4 1/2" REG Box	4 1/2" IF Box	8.33	8.61
1	mule shoe	PES	675-17990		6.75	0	0	4 1/2" IF Pin	4 1/2" IF Box	1.06	9.67
1	Short NMDC	PES	675-23450		6.75	2.75	0	4 1/2" IF Pin	4 1/2" IF Box	3.80	13.47
1	Short NMDC	PES	675-23449		6.75	2.75	0	4 1/2" IF Pin	4 1/2" IF Box	3.90	17.37
1	NMDC	PES	675-21270		6.75	3.25	0	4 1/2" IF Pin	4 1/2" IF Box	9.48	26.85
1	X/O Sub	Rig			6.58	2.88	0	4 1/2" IF Pin	4" IF Box	0.60	27.45
1	18 x Drill Collar	Rig			0	0	0			166.65	194.10
1	Jar				6.5	2.75	0	4" IF Pin	4" IF Box	9.06	203.16
2	2 X Drill Collar	Rig			6.25	2.878	0	4" IF Pin	4" IF Box	18.17	221.33
1	6 x HWDP	Rig			6.25	2.878	0	4" IF Pin	4" IF Box	54.97	276.30

(O.D. units are ; I.D. units are ; F.Neck units are)

— GENERAL INFORMATION —

DATES RUN: 2009/12/16 TO 2009/12/17
DEPTH IN: 1246.00 ANGLE IN: 0.00
DEPTH OUT: 1326.00 ANGLE OUT: 0.00
DRILL HRS: 14.00 BUILD: 0.00
ORIENTING HRS: 4.50 HOLE MADE: 80.00
ROTATING HRS: 9.50 AVG R.O.P.: 5.71

— MOTOR INFORMATION —

MANFCT. PES SETTING: 1.50
SERIAL #: 675-3196 KICK PAD: No
MODEL: STABILIZER: 8 3/8" (213mm)
LOBE CFG: 6/7 MOTOR HRS: 17.25
BIT TO BEND: 0

— PUMP INFORMATION —

PUMPS	PUMP 1	PUMP 2	PUMP 3
EFFICIENCY:	1.0%	100.0%	100.0%
S.P.M.:	0	58	0
STROKE VOLUME:	6.78	6.78	0.0
TOTAL FLOW RATE:	393.24		
PUMP PRESSURE:	OFF BTM: 1250	ON BTM: 1450	

— MUD INFORMATION —

MUD TYPE: Polymer LIQUID BASE: Water
DENSITY: 9.2 TEMP: 0
VISCOSITY: 38 pH: 8.5
WTR LOSS: 7.8 SAND: 0.25 LIQUID RATE: 0
PLAST VISC: 10 SOLIDS: 5.9 GAS TYPE:
YIELD PT: 10 OIL: 0 GAS RATE: 0

— BIT INFORMATION —

MANFCT: Reed TYPE: R30APDH IADC BIT GRADE: 3 / 3 / BT / G / E / 1 / CT / TQ
NOZZLES: 0.746 TFA

— REASON FOR BHA CHANGE —

Pulled for sidetrack.

— FORMATION CHARACTERISTICS —

45% Siltstone, 15% Silty Sandstone, 20% Limestone, 20% Sandstone.

— MWD COMMENTS —

MWD performed well.





Weatherford®

BHA Report

BHA 5 - Build And drop Section

Drilling Services

V4.2.2015

FILE #: 1010101
JOB TYPE:
RIG & NO: Hunt Energy 3

WELL NAME: Westwood # 1
COMPANY: Overseas Energy Holdings
SURFACE LOCATION: Haspsden

SERVICE CO.: Precision Energy Services
SURVEY TYPE:
FIELD / LOCATION: Westwood / Tasmania / Australia

DIR Supervisor: Bob Fleming, Dan Power
MWD Supervisor: Olive Pickering, Faheem Khan

BHA SURVEY TYPE: Positive Pulse MWD HOLE SIZE: 8.5

QTY	COMPONENT	MANFCT.	SERIAL #	MODEL	O.D.	I.D.	F.N.	BOT. CONN.	TOP CONN.	LEN.	C.LEN
1	Tri-Cone Bit	Smith	PK9578	FH30	8.5	0	0		4 1/2" REG Pin	0.28	0.28
1	Drilling Motor	PES	675-3186		6.75	0	0	4 1/2" REG Box	4 1/2" IF Box	8.33	8.61
1	mule shoe	PES	675-17990		6.75	0	0	4 1/2" IF Pin	4 1/2" IF Box	1.06	9.67
1	Short NMDC	PES	675-23450		6.75	2.75	0	4 1/2" IF Pin	4 1/2" IF Box	3.90	13.47
1	Short NMDC	PES	675-23449		6.75	2.75	0	4 1/2" IF Pin	4 1/2" IF Box	3.90	17.37
1	NMDC	PES	675-21270		6.75	3.25	0	4 1/2" IF Pin	4 1/2" IF Box	9.48	26.85
1	X/O Sub	Rig			6.58	2.88	0	4 1/2" IF Pin	4" IF Box	0.60	27.45
1	18 x Drill Collar	Rig			0	0	0			168.65	194.10
1	Jar				6.5	2.75	0	4" IF Pin	4" IF Box	9.06	203.16
2	2 X Drill Collar	Rig			6.25	2.878	0	4" IF Pin	4" IF Box	18.17	221.33
1	6 x HWDP	Rig			6.25	2.878	0	4" IF Pin	4" IF Box	54.97	276.30

(O.D. units are ; I.D. units are ; F.Neck units are)

— GENERAL INFORMATION —

DATES RUN: 2009/12/18 TO 2009/12/21
DEPTH IN: 804.00 ANGLE IN: 0.00
DEPTH OUT: 1121.00 ANGLE OUT: 0.00
DRILL HRS: 47.25 BUILD: 0.00
ORIENTING HRS: 24.00 HOLE MADE: 282.00
ROTATING HRS: 23.25 AVG R.O.P.: 5.97

— MOTOR INFORMATION —

MANFCT. PES
SERIAL #: 675-3186
MODEL:
LOBE CFG: 6/7
BIT TO BEND: 0
SETTING: 1.50
KICK PAD: No
STABILIZER: 8 3/8" (213mm)
MOTOR HRS: 62.50

— PUMP INFORMATION —

PUMPS	PUMP 1	PUMP 2	PUMP 3
EFFICIENCY:	1.0%	100.0%	100.0%
S.P.M.:	57	0	0
STROKE VOLUME:	6.78	6.78	0.0
TOTAL FLOW RATE:	3.67137		
PUMP PRESSURE:	OFF BTM: 1100	ON BTM: 1350	

— MUD INFORMATION —

MUD TYPE: Polymer
LIQUID BASE: Water
DENSITY: 9.3
TEMP: 0
VISCOSITY: 44
pH: 10.5
WTR LOSS: 6.8
SAND: 0.25 LIQUID RATE: 0
PLAST VISC: 19
SOLIDS: 6.1 GAS TYPE:
YIELD PT: 16
OIL: 0 GAS RATE: 0

— BIT INFORMATION —

MANFCT: Smith TYPE: FH30 IADC BIT GRADE: 2 / 2 / NO / A / E / 1 / NO / DMF
NOZZLES: 0.92 TFA

— REASON FOR BHA CHANGE —

Motor pressure spiked. Worn bearing DMF

— FORMATION CHARACTERISTICS —

60% Siltstone, 15% Silty Sandstone, 5% Limestone, 20% Sandstone.

— MWD COMMENTS —

MWD performed well.





BHA Report BHA 6 - Hold Section

Drilling Services
V4.2.2015

FILE #: 1010101
JOB TYPE:
RIG & NO: Hunt Energy 3

WELL NAME: Westwood # 1
COMPANY: Overseas Energy Holdings
SURFACE LOCATION: Haspden

SERVICE CO.: Precision Energy Services
SURVEY TYPE:
FIELD / LOCATION: Westwood / Tasmania / Australia

DIR Supervisor: Bob Fleming, Dan Power
MWD Supervisor: Olive Pickering, Faheem Khan

BHA SURVEY TYPE: Positive Pulse MWD HOLE SIZE: 8.5

QTY	COMPONENT	MANFCT.	SERIAL #	MODEL	O.D.	I.D.	F.N.	BOT. CONN.	TOP CONN.	LEN.	C.LEN
1	Tri-Cone Bit	Smith	FH30-DVPS	PJ4480	8.5	0	0		4 1/2" REG Pin	0.25	0.25
1	Drilling Motor	PES	675-2600		6.75	0	0	4 1/2" REG Box	4 1/2" IF Box	8.56	8.81
1	Stabilizer 8.125"	PES	WFD-2786	steel	6.5	2.125	0.695	4 1/2" IF Pin	4 1/2" IF Box	1.83	10.64
1	mule shoe	PES	675-17990		6.75	0	0	4 1/2" IF Pin	4 1/2" IF Box	1.06	11.70
1	Short NMDC	PES	675-23450		6.75	2.75	0	4 1/2" IF Pin	4 1/2" IF Box	3.80	15.50
1	Short NMDC	PES	675-23449		6.75	2.75	0	4 1/2" IF Pin	4 1/2" IF Box	3.90	19.40
1	NMDC	PES	675-21270		6.75	3.25	0	4 1/2" IF Pin	4 1/2" IF Box	9.48	28.88
1	X/O Sub	Rig			6.58	2.88	0	4 1/2" IF Pin	4" IF Box	0.60	29.48
1	8.125 String Reamer	Rig	XM-1281	STEEL	6.75	2.875	0	4" IF Pin	4" IF Box	1.79	31.27
1	18 x Drill Collar	Rig			0	0	0			166.65	197.92
1	Jar				6.5	2.75	0	4" IF Pin	4" IF Box	9.06	206.98
2	2 X Drill Collar	Rig			6.25	2.878	0	4" IF Pin	4" IF Box	18.17	225.15
1	6 x HWDP	Rig			6.25	2.878	0	4" IF Pin	4" IF Box	54.97	280.12

(O.D. units are ; I.D. units are ; F.Neck units are)

— GENERAL INFORMATION —

DATES RUN: 2009/12/21 TO 2009/12/26
DEPTH IN: 1121.00 ANGLE IN: 0.00
DEPTH OUT: 1391.00 ANGLE OUT: 0.00
DRILL HRS: 83.50 BUILD: 0.00
ORIENTING HRS: 43.75 HOLE MADE: 270.00
ROTATING HRS: 39.75 AVG R.O.P.: 3.23

— MOTOR INFORMATION —

MANFCT. PES
SERIAL #: 675-2600
MODEL:
LOBE CFG: 6/7
BIT TO BEND: 0
SETTING: 1.50
KICK PAD: No
STABILIZER: 8 3/8" (213mm)
MOTOR HRS: 83.50

— PUMP INFORMATION —

PUMPS	PUMP 1	PUMP 2	PUMP 3
EFFICIENCY:	1.0%	100.0%	100.0%
S.P.M.:	57	0	0
STROKE VOLUME:	6.78	0.0	0.0
TOTAL FLOW RATE:	3.67137		
PUMP PRESSURE:	OFF BTM: 1400	ON BTM: 1450	

— MUD INFORMATION —

MUD TYPE: Polymer
LIQUID BASE: Water
DENSITY: 9.35
TEMP: 0
VISCOSITY: 41
pH: 10.5
WTR LOSS: 6.5
SAND: 0.1
LIQUID RATE: 0
PLAST VISC: 16
SOLIDS: 6.6
GAS TYPE:
YIELD PT: 19
OIL: 0
GAS RATE: 0

— BIT INFORMATION —

MANFCT: Smith TYPE: PJ4480 IADC BIT GRADE: 3 / 2 / NO / A / E / 1 / NO / DTF
NOZZLES: 0.746 TFA

— REASON FOR BHA CHANGE —

Battery failure.

— FORMATION CHARACTERISTICS —

Fissile and sub fissile shaley siltstone and subordinate hard sandstone. Formation has a tendency to pull to the left and build angle. Three formation horizons were mapped on the same track in a comparison between initial and sidetrack wells suggesting a 10 degree dip to the west. 70% Siltstone, 5% Silty Sandstone, 5% Limestone, 20% Sandstone.



BHA Report BHA 7 - Hold Section

Drilling Services
V4.2.2015

FILE #: 1010101
JOB TYPE:
RIG & NO: Hunt Energy 3

WELL NAME: Westwood # 1
COMPANY: Overseas Energy Holdings
SURFACE LOCATION: Haspden

SERVICE CO.: Precision Energy Services
SURVEY TYPE:
FIELD / LOCATION: Westwood / Tasmania / Australia

DIR Supervisor: Dan Power, Ned Clark
MWD Supervisor: Clive Pickering, Faheem Khan

BHA SURVEY TYPE: Positive Pulse MWD HOLE SIZE: 8.5

QTY	COMPONENT	MANFCT.	SERIAL #	MODEL	O.D.	I.D.	F.N.	BOT. CONN.	TOP CONN.	LEN.	C.LEN
1	Tri-Cone Bit	Smith	PM4384	GF150DPS	0	0	0		4 1/2" REG Pin	0.25	0.25
1	Drilling Motor	PES	675-2600		6.75	0	0	4 1/2" REG Box	4 1/2" IF Box	8.56	8.81
1	Stabilizer 8.125"	PES	WFD-2786	steel	6.5	2.125	0.695	4 1/2" IF Pin	4 1/2" IF Box	1.83	10.64
1	Muleshoe sub	PES	675-17980		6.75	0	0	4 1/2" IF Pin	4 1/2" IF Box	1.10	11.74
1	Short NMDC	PES	675-23450		6.75	2.75	0	4 1/2" IF Pin	4 1/2" IF Box	3.80	15.54
1	Short NMDC	PES	675-23449		6.75	2.75	0	4 1/2" IF Pin	4 1/2" IF Box	3.90	19.44
1	NMDC	PES	675-21270		6.75	3.25	0	4 1/2" IF Pin	4 1/2" IF Box	9.48	28.92
1	X/O Sub	Rig			6.58	2.88	0	4 1/2" IF Pin	4" IF Box	0.60	29.52
1	8.125 String Reamer	Rig	XM-1281	STEEL	6.75	2.875	0	4" IF Pin	4" IF Box	1.79	31.31
1	14 X Drill Collar	Rig			6.25	2.875	0	4" IF Pin	4" IF Box	129.68	160.99
1	Jar				6.5	2.75	0	4" IF Pin	4" IF Box	9.06	170.05
2	2 X Drill Collar	Rig			6.25	2.878	0	4" IF Pin	4" IF Box	18.17	188.22
1	6 x HWDP	Rig			6.25	2.878	0	4" IF Pin	4" IF Box	54.97	243.19

(O.D. units are ; I.D. units are ; F.Neck units are)

— GENERAL INFORMATION —

DATES RUN: 2009/12/26 TO 2009/12/28
DEPTH IN: 1391.00 ANGLE IN: 0.00
DEPTH OUT: 1517.24 ANGLE OUT: 0.00
DRILL HRS: 33.75 BUILD: 0.00
ORIENTING HRS: 14.75 HOLE MADE: 126.24
ROTATING HRS: 17.00 AVG R.O.P.: 3.74

— MOTOR INFORMATION —

MANFCT. PES
SERIAL #: 675-2600
MODEL:
LOBE CFG: 6/7
BIT TO BEND: 0
SETTING: 1.50
KICK PAD: No
STABILIZER: 8 3/8" (213mm)
MOTOR HRS: 32.50

— PUMP INFORMATION —

PUMPS	PUMP 1	PUMP 2	PUMP 3
EFFICIENCY:	1.0%	100.0%	100.0%
S.P.M.:	57	0	0
STROKE VOLUME:	6.78	0.0	0.0
TOTAL FLOW RATE:	3.67137		
PUMP PRESSURE:	OFF BTM: 1300	ON BTM: 1400	

— MUD INFORMATION —

MUD TYPE: Polymer
LIQUID BASE: Water
DENSITY: 9.3
TEMP: 0
VISCOSITY: 40
pH: 10
WTR LOSS: 6.6
SAND: 0.1 LIQUID RATE: 0
PLAST VISC: 16
SOLIDS: 6.3 GAS TYPE:
YIELD PT: 17
OIL: 0 GAS RATE: 0

— BIT INFORMATION —

MANFCT: Smith TYPE: GF150DPS IADC BIT GRADE: 4 / 7 / BT / G / E / 1 / SD / DTF
NOZZLES: 0.746 TFA

— REASON FOR BHA CHANGE —

Pulled for MWD failure. Ran in with Dropping assembly, took out roller reamer and reduced bend to 1.15 to reduce torque and drop angle.

— FORMATION CHARACTERISTICS —

Drilling hard bands of quartzite. 70% Siltstone, 5% Silty Sandstone, 5% Limestone, 20% Sandstone.



BHA Report BHA 8 - Hold Section

Drilling Services
V4.2.2015

FILE #: 1010101 WELL NAME: Westwood # 1 SERVICE CO.: Precision Energy Services
JOB TYPE: COMPANY: Overseas Energy Holdings SURVEY TYPE:
RIG & NO: Hunt Energy 3 SURFACE LOCATION: Haspden FIELD / LOCATION: Westwood / Tasmania / Australia

DIR Supervisor: Dan Power, Ned Clark
MWD Supervisor: Clive Pickering, Faheem Khan

BHA SURVEY TYPE: Positive Pulse MWD HOLE SIZE: 8.5

QTY	COMPONENT	MANFCT.	SERIAL #	MODEL	O.D.	I.D.	F.N.	BOT. CONN.	TOP CONN.	LEN.	C.LEN
1	Tri-Cone Bit	Reed	CN6324	R30APDH	8.5	0	0		4 1/2" REG Pin	0.25	0.25
1	Drilling Motor	PES	675-2600		6.75	0	0	4 1/2" REG Box	4 1/2" IF Box	8.56	8.81
1	Stabilizer 8.125"	PES	WFD-2786	steel	6.5	2.125	0.695	4 1/2" IF Pin	4 1/2" IF Box	1.83	10.64
1	Muleshoe sub	PES	675-17980		6.75	0	0	4 1/2" IF Pin	4 1/2" IF Box	1.10	11.74
1	Short NMDC	PES	675-23450		6.75	2.75	0	4 1/2" IF Pin	4 1/2" IF Box	3.80	15.54
1	Short NMDC	PES	675-23449		6.75	2.75	0	4 1/2" IF Pin	4 1/2" IF Box	3.90	19.44
1	NMDC	PES	675-21270		6.75	3.25	0	4 1/2" IF Pin	4 1/2" IF Box	9.48	28.92
1	X/O Sub	Rig			6.58	2.88	0	4 1/2" IF Pin	4" IF Box	0.60	29.52
1	14 X Drill Collar	Rig			6.25	2.875	0	4" IF Pin	4" IF Box	129.68	159.20
1	Jar				6.5	2.75	0	4" IF Pin	4" IF Box	9.06	168.26
2	2 X Drill Collar	Rig			6.25	2.878	0	4" IF Pin	4" IF Box	18.17	186.43
1	6 x HWDP	Rig			6.25	2.878	0	4" IF Pin	4" IF Box	54.97	241.40

(O.D. units are ; I.D. units are ; F.N. units are)

— GENERAL INFORMATION —

DATES RUN: 2009/12/28 TO 2009/12/30
DEPTH IN: 1517.24 ANGLE IN: 0.00
DEPTH OUT: 1604.57 ANGLE OUT: 0.00
DRILL HRS: 26.50 BUILD: 0.00
ORIENTING HRS: 25.75 HOLE MADE: 87.33
ROTATING HRS: 0.75 AVG R.O.P.: 3.30

— MOTOR INFORMATION —

MANFCT. PES
SERIAL #: 675-2600
MODEL:
LOBE CFG: 6/7
BIT TO BEND: 0
SETTING: 1.15
KICK PAD: No
STABILIZER: No
MOTOR HRS: 26.75

— PUMP INFORMATION —

PUMPS	PUMP 1	PUMP 2	PUMP 3	MUD TYPE: Polymer	LIQUID BASE: Water
EFFICIENCY:	1.0%	100.0%	100.0%	DENSITY: 9.3	TEMP: 0
S.P.M.:	57	0	0	VISCOSITY: 43	pH: 9.7
STROKE VOLUME:	6.78	0.0	0.0	WTR LOSS: 6.8	SAND: 0.1 LIQUID RATE: 0
TOTAL FLOW RATE:	3.67137			PLAST VISC: 16	SOLIDS: 6.3 GAS TYPE:
PUMP PRESSURE:	OFF BTM: 1300	ON BTM: 1350		YIELD PT: 19	OIL: 0 GAS RATE: 0

— MUD INFORMATION —

— BIT INFORMATION —

MANFCT: Reed TYPE: R30APDH IADC BIT GRADE: 6 / 4 / BT / G / E / 1 / SD / BHA
NOZZLES: 0.746 TFA

— REASON FOR BHA CHANGE —

Could not drop Inc to cross target line quick enough. Built to 12.25 degrees.

— FORMATION CHARACTERISTICS —

Drilling hard bands of quartz-meta sandstone. 60% Siltstone, 5% Silty Sandstone, 5% Limestone, 30% Sandstone.

— MWD COMMENTS —

MWD performed well



BHA Report BHA 9 - Hold Section

Drilling Services
V4.2.26/5

FILE #: 1010101 WELL NAME: Westwood # 1 SERVICE CO.: Precision Energy Services
JOB TYPE: COMPANY: Overseas Energy Holdings SURVEY TYPE:
RIG & NO: Hunt Energy 3 SURFACE LOCATION: Haspden FIELD / LOCATION: Westwood / Tasmania / Australia

DIR Supervisor: Dan Power, Ned Clark
MWD Supervisor: Clive Pickering, Faheem Khan

BHA SURVEY TYPE: Positive Pulse MWD HOLE SIZE: 8.5

QTY	COMPONENT	MANFCT.	SERIAL #	MODEL	O.D.	I.D.	F.N.	BOT. CONN.	TOP CONN.	LEN.	C.LEN
1	Tri-Cone Bit	Smith	PK9578	FH30	8.5	0	0		4 1/2" REG Pin	0.28	0.28
1	Drilling Motor	PES	67 5-2355	LE6754	0	0	6.505	4 1/2" REG Box	4 1/2" IF Box	8.35	8.63
1	Muleshoe sub	PES	67 5-17980		6.75	0	0	4 1/2" IF Pin	4 1/2" IF Box	1.10	9.73
1	Short NMDC	PES	67 5-23450		6.75	2.75	0	4 1/2" IF Pin	4 1/2" IF Box	3.80	13.53
1	Short NMDC	PES	67 5-23449		6.75	2.75	0	4 1/2" IF Pin	4 1/2" IF Box	3.90	17.43
1	NMDC	PES	67 5-21270		6.75	3.25	0	4 1/2" IF Pin	4 1/2" IF Box	9.48	26.91
1	X/O Sub	Rig			6.58	2.88	0	4 1/2" IF Pin	4" IF Box	0.60	27.51
1	12 X Drill Collar	Rig			6.25	2.875	0	4" IF Pin	4" IF Box	111.31	138.82
1	Jar				6.5	2.75	0	4" IF Pin	4" IF Box	9.06	147.88
2	2 X Drill Collar	Rig			6.25	2.878	0	4" IF Pin	4" IF Box	18.17	166.05
1	6 x HWDP	Rig			6.25	2.878	0	4" IF Pin	4" IF Box	54.97	221.02

(O.D. units are ; I.D. units are ; F.Neck units are)

— GENERAL INFORMATION —

DATES RUN: 2009/12/30 TO 2010/01/01
DEPTH IN: 1604.57 ANGLE IN: 0.00
DEPTH OUT: 1679.00 ANGLE OUT: 0.00
DRILL HRS: 27.25 BUILD: 0.00
ORIENTING HRS: 26.25 HOLE MADE: 74.43
ROTATING HRS: 1.00 AVG R.O.P.: 2.73

— MOTOR INFORMATION —

MANFCT: PES SETTING: 1.50
SERIAL #: 67 5-2355 KICK PAD: No
MODEL: LE6754 STABILIZER: 8 3/8" (213mm)
LOBE CFG: 6/7 MOTOR HRS: 30.75
BIT TO BEND: 1.715

— PUMP INFORMATION —

PUMPS	PUMP 1	PUMP 2	PUMP 3
EFFICIENCY:	1.0%	100.0%	100.0%
S.P.M.:	57	0	0
STROKE VOLUME:	6.78	0.0	0.0
TOTAL FLOW RATE:	3.67137		
PUMP PRESSURE:	OFF BTM: 1250	ON BTM: 1350	

— MUD INFORMATION —

MUD TYPE: Polymer LIQUID BASE: Water
DENSITY: 9.3 TEMP: 0
VISCOSITY: 42 pH: 9.6
WTR LOSS: 6.8 SAND: 0.1 LIQUID RATE: 0
PLAST VISC: 17 SOLIDS: 6.3 GAS TYPE:
YIELD PT: 19 OIL: 0 GAS RATE: 0

— BIT INFORMATION —

MANFCT: Smith TYPE: FH30 IADC BIT GRADE: 5 / 4 / BT / G / E / I / BT / TD
NOZZLES: 0.92 TFA

— REASON FOR BHA CHANGE —

TD well 1679m

— FORMATION CHARACTERISTICS —

60% Siltstone, 5% Silty Sandstone, 5% Limestone, 30% Sandstone.

— MWD COMMENTS —

MWD performed well

6. Motor Run Reports

DRILLING SYSTEMS MOTOR RUN DATA SHEET

Customer:	Overseas Energy Holdings			Well:	Westwood #1		
Rig / Platform:	Hunt Rig 3			Hole Section:	8 1/2" Drop and hold		
Job No.:	AU-DD-OEH-001			Date:	12/11/2009 - 1/1/2010		

Tool / Motor Data	1	2	3	4
Run No.:	1	2	3	4
BHA No.:	2	3	4	5
Tool Type:	PP MWD	PP-MWD	PP MWD	PP MWD
Tool No.:	675-3186	675-3186	675-3186	675-3186
Tool Size:	6 3/4"	6 3/4	6 3/4	6 3/4
AKO:	1.5	1.5	1.5	1.5
UBHS:	675-17990	675-17990	675-17990	675-17990
Depth In:	1005m	1074	1246	814
Depth Out:	1074	1246	1326	1121
Footage:	69m	172	80	307
Date In:	12/11/2009	12/13/2009	12/18/2009	12/18/2009
Date Out:	12/13/2009	12/16/2009	12/17/2009	12/21/2009
Drill Hrs:	11.98	24.74	5.44	45.41
Circ Hrs:	2.92	3.17	1.83	3.75
Op Hrs:	14.9	27.91	7.27	49.16
Rotary Hrs:	7.87	19.98	1.99	17.41
Steer Hrs:	4.31	4.76	3.45	28
Avg ROP:	5.75	8.95	14.7	6.76
Max Temp:	45	45	45	45
CircTemp:				

Differential Pressure				
Stall:				
Working:	215	200	150	150

Bearing Wear				
Gap In:	0.36	0.68	0.97	2.15
Gap Out:	0.68	0.97	2.15	5.2

Bit Data				
Bit Type:	EBXS20DS	EBXS20DS	R30A PHD	FH30
Manufacturer:	Security	Security	Reed	Smith
TFA:	0.74	0.7455	0.745	0.745
Nozzle Size:	3 x 18	3 x 18	3 x 18	3 x 18

Parameters				
RPM:	60	60	60	60
Avg WOB:	20	25	25	25
Max WOB:	30	35	35	35
Min Flow:	324	324	324	324
Max Flow:	324	395	395	395
Min SPP:	850	1250	1250	1250
Max SPP:	1150	1450	1450	1450

Mud Data				
Mud Type:	Polymer	Polymer	Polymer	Polymer
Mud weight:	9.2	9.2	9.2	9.2
PV / YP:	Jan-00	10	10	10
% Solids/Sand:	tr	tr	tr	

Formation				
	10% Siltstone	60% Siltstone	45% Siltstone	60% Silty Sandstone
	10-15% Sandstone	15% Silty Sandstone	20% Limestone	20% Sandstone
	75% Conglomerate	5% Limestone	15% Silty Sandstone	15% Silty Sandstone
		20% Sandstone	20% Sandstone	5% Limestone

Tool / Motor Data				
Run No.:	5	6	7	8
BHA No.:	6	7	8	9
Tool Type:	PP MWD	PP MWD	PP MWD	PP MWD
Tool No.:	675-2800	675-2800	675-2800	675-2355
Tool Size:	6 3/4	6 3/4	6 3/4	6 3/4
AKO:	1.5	1.5	1.15	1.5
UBHS:	675-17980	675-17980	675-17980	675-17980
Depth In:	1111	1391	1517	1804
Depth Out:	1391	1517	1804	1780
Footage:	280	128	87	
Date In:	12/22/2009	12/26/2009	12/28/2009	12/31/2009
Date Out:	12/26/2009	12/28/2009	12/30/2009	1/1/2010
Drill Hrs:	55.57	21.99	18	20.42
Circ Hrs:	7.58	4.92	3.18	?
Op Hrs:	63.15	26.91	19.16	
Rotary Hrs:	27.54	12.79	4.5	0.5
Steer Hrs:	28.03	9.2	11.5	19.92
Avg ROP:	5.03	5.72	3.67	
Max Temp:	45	45	48	54.5
CircTemp:				
Differential Pressure				
Static:				
Working:	150	100	50	100
Bearing Wear				
Gap In:	0.5	0.75	3	2.15
Gap Out:	0.75	3	4.1	5.2
Bit Data				
Bit Type:	FH30DVPS	GF-150-DPS	R30APDH	FH30
Manufacturer:	Smith	Smith	Reed	Smith
TFA:	0.745	0.0745	0.0745	0.9204
Nozzle Size:	3 X18	3 x18	3 X18	3 X 20
Parameters				
RPM:	60	60	60	60
Avg WOB:	20	15-20	15-20	15-20
Max WOB:	25	25	25	25
Min Flow:	324	380	380	380
Max Flow:	390	400	400	400
Min SPP:	1140	1100		
Max SPP:	1300	1400		
Mud Data				
Mud Type:	Polymer	Polymer	Polymer	Polymer
Mud weight:	9.3	9.3	9.3	
PV / YP:	15/17	16/20	17/22	
% Solids/Sand:	0.25/5.9	tr/ 6.3	0.1/6.3	
Formation:				
	70% Silt Stone	70% Silt Stone	65% Silt Stone	
	20 % Sandstone	20 % Sandstone	30 % Sandstone	
	5% Silty Sandstone	5% Silty Sandstone	5% Silty Sandstone	
	5% Limestone	5% Limestone	5% Limestone	
Comments				
Run # 1 motor was pulled for MWD failure.				
Run # 2 was pulled for bit.				
Run # 3 Pulled for sidetrack				
Run # 4 Pulled for motor pressure spiking.				
Run # 5 Pulled for MWD failure.				
Run # 6 Pulled for MWD failure.				
Run # 7 Pulled to dial up motor and change BHA to slick				
Run # 8 Pulled for TD				

7. Drilling Parameters

Statistics summary	CLIENT	Kelly Down Engineering								MOTOR TYPE:
	AREA	Westwood Tamunula								LE 0754
	REG	Hunt Oil Rq. 3								MOTOR SN:
	WELL #	Westwood 1								675-1100
	0%	0%								RestGAL. = 0.283
Total in job	TOTAL BIT REVELATIONS =		#/VALUE							
	Motor size:	Dist to bit:								
	0%	Bit Hts: 0.00	Motor Hts: 55.10							
	0%	O Hts: 11.60	Cir. Hts: 6.92							
	0%	R Hts: 35.50	Ream. Hts: 1.00							
Total in job	Drilling ROP:		In Job ROP:							
	Pump Output:		Ave Differential:							
	5.60		5.60							
	DRILLERS: B.Fleming		DRILLERS: B.Fleming							
	Tot. FWHR: 147		Tot. FWHR: 147							
Total in job	BHA #		BIT TYPE/MANUF:							
	2		3							
	SECURITY		SECURITY							
	SECURITY		SECURITY							
	SECURITY		SECURITY							

SIT TIME	END TIME	DRLG MINS	START DEPTH	O R	Drg CL	Mns CIR	Mns Km	Hrs Drg	WOB	TF/ RPM	TORQ GPM	LPM GPM	SPPPSI KPA			DIFFL	SVT DPTH	INC	AZIM	TYD	DLS	BR	INC	TYD	COMMENTS																																																																																																																																																																																																																																																																																																																																																																																																																																																																																																																																																																																																																																																																																																																																																																																																																																																																																																																																																																																																																																																																																																																																																																																																																																															
													OFF	ON	SPM											22:15	23:46	91	1012	1012	O	7	10	1.35	25	90/100L		320	37	850	1000	150	996	13.43	32.55						12/12/09	0:07	0:54	47	1012	1015	O	3	5	0.70	25	90/100L		320	57	850	1050	200	996	13.43	32.55						13/12/09	0:54	3:15	141	1015	1021	R	6		2.35	25	60	65	320	57	850	1050	200	1013	15.66	30.28							3:20	5:54	154	1021	1030	R	9	5	2.48	25	60	65	320	57	850	1050	200	1040	13.82	13.08							6:08	8:03	115	1030	1038	O	8	5	1.83	25/30	150L		320	57	850	1050	200										8:03	8:11	8	1038	1039	R	1	5	0.05	20/25	60	70	320	57	850	1050	200										8:20	11:30	190	1038	1049	R	10		3.17	20/25	60	70	320	57	850	1050	200										11:35	13:15	100	1049	1059	R	10		1.67	15/25	60	70	320	57	850	1000	150										13:25	14:21	56	1059	1064	O	5	5	0.85	25/30	170L		320	57	850	1150	300										14:21	15:18	57	1064	1068	R	4		0.95	25	60	70	320	57	850	1100	250	MWD Failure	POOH							14/12/09	15:20	17:10	110	1068	1073	R	5	140	-0.50	25	60	70	320	57	850	1100	250	1058	13.69	9.05							20:45	21:19	34	1073	1076	R	3	40	-0.10	20	60	60	394	58	1200	1300	100										21:44	22:05	21	1076	1078	O	2	20	0.02	25/30	120L		394	58	1200	1350	150										22:05	22:35	30	1078	1082	O	4	5	0.42	30	180		394	58	1200	1350	150										22:35	23:02	27	1082	1086	R	4	5	0.37	25	60	75	394	58	1200	1300	100										23:02	0:00	58	1086	1090	R	4		0.97	25	60	75	394	58	1200	1300	100										0:00	0:30	50	1090	1095	R	5		0.50	25	60	75	394	58	1200	1350	150	1087	11.04	359.55						15/12/09	0:40	1:57	77	1095	1105	R	10	5	1.20	25	60	70	394	58	1200	1350	150	1116	9.18	347.14							2:12	3:35	83	1105	1110	O	5	5	1.30	35	180		394	58	1200	1350	150	1145	8.29	327.53							3:35	4:25	50	1110	1114	R	4		0.83	25	60	70	394	58	1200	1350	150	1173	7.50	310.05							4:30	6:20	110	1114	1123	R	9	5	1.75	25	60	70	394	58	1200	1350	150										6:25	7:54	89	1123	1132	R	9		1.48	25	60	70	394	58	1200	1350	150										8:08	9:40	92	1132	1140	O	8	5	1.45	35	180		394	58	1250	1400	150										9:40	10:08	28	1140	1142	R	2		0.47	25	60	75	394	58	1250	1350	100										10:17	12:40	143	1142	1151	R	9		2.38	25	60	75	394	58	1250	1350	100										12:45	14:55	130	1151	1160	R	9	5	2.08	25	60	75	395	58	1250	1350	100										15:35	16:45	70	1160	1170	O	10	25	0.75	35	180		395	58	1250	1350	100	R/G service									16:55	19:10	135	1170	1180	R	10		2.25	25	60	75	395	58	1250	1350	100										19:10	20:30	80	1180	1188	R	8	5	1.25	25	60	75	395	58	1250	1350	100										20:35	22:00	85	1188	1197	O	9	5	1.33	35	180		395	58	1250	1350	100										22:00	22:20	20	1197	1199	R	1.6		0.33	25	60	75	395	58	1250	1350	100										22:30	0:00	90	1198.6	1207	R	8.4		1.50	25	60	75	395	58	1250	1350	100										0:00	1:30	90	1207	1217	R	10	5	1.42	25	60	75	395	58	1250	1350	100	1201	7.49	291.65						16/12/09	1:45	2:54	69	1217	1225	O	8		1.15	35	150L		395	58	1250	1400	150	1230	8.27	273.90							3:15	4:20	65	1225	1236	R	9		0.13	25	60	80	395	58	1250	1400	150										4:30	6:00	90	1236	1245	R	9	5	1.08	25	60	80	395	58	1250	1450	200										6:25	7:00	35	1245	1246	O	1	35	0.00	35	180		395	58	1250	1500	250										18:45	19:42	57	1246	1254	R	8	60	-0.05	35	60	80	395	58	1250	1400	150	New bit									20:00	22:40	120	1254	1264	R	10	10	1.83	25	60	80	395	58	1250	1400	150										22:05	23:40	95	1264	1273	R	9	5	1.50	25	60	80	395	58	1250	1400	150										0:11	2:05	114	1273	1281	O	8	20	1.57	35	180		407	60	1350	1450	100	Pump #1 too noisy. No toolfaces									2:05	2:20	15	1281	1283	R	2	5	0.17	25	60	80	394	58	1250	1450	200										2:25	4:45	140	1283	1293	R	10		2.33	25	60	80	394	58	1250	1450	200										4:50	6:29	99	1293	1302	R	9	5	1.57	25	60	80	394	58	1250	1400	150										6:45	8:00	75	1302	1311	O	9	5	1.17	35	180		394	58	1250	1400	150										8:22	8:40	18	1311	1313	O	2		0.30	35	180		407	60	1350	1600	150										10:05	11:00	55
22:15	23:46	91	1012	1012	O	7	10	1.35	25	90/100L		320	37	850	1000	150	996	13.43	32.55						12/12/09																																																																																																																																																																																																																																																																																																																																																																																																																																																																																																																																																																																																																																																																																																																																																																																																																																																																																																																																																																																																																																																																																																																																																																																																																																															
0:07	0:54	47	1012	1015	O	3	5	0.70	25	90/100L		320	57	850	1050	200	996	13.43	32.55						13/12/09																																																																																																																																																																																																																																																																																																																																																																																																																																																																																																																																																																																																																																																																																																																																																																																																																																																																																																																																																																																																																																																																																																																																																																																																																																															
0:54	3:15	141	1015	1021	R	6		2.35	25	60	65	320	57	850	1050	200	1013	15.66	30.28																																																																																																																																																																																																																																																																																																																																																																																																																																																																																																																																																																																																																																																																																																																																																																																																																																																																																																																																																																																																																																																																																																																																																																																																																																																					
3:20	5:54	154	1021	1030	R	9	5	2.48	25	60	65	320	57	850	1050	200	1040	13.82	13.08																																																																																																																																																																																																																																																																																																																																																																																																																																																																																																																																																																																																																																																																																																																																																																																																																																																																																																																																																																																																																																																																																																																																																																																																																																																					
6:08	8:03	115	1030	1038	O	8	5	1.83	25/30	150L		320	57	850	1050	200																																																																																																																																																																																																																																																																																																																																																																																																																																																																																																																																																																																																																																																																																																																																																																																																																																																																																																																																																																																																																																																																																																																																																																																																																																																								
8:03	8:11	8	1038	1039	R	1	5	0.05	20/25	60	70	320	57	850	1050	200																																																																																																																																																																																																																																																																																																																																																																																																																																																																																																																																																																																																																																																																																																																																																																																																																																																																																																																																																																																																																																																																																																																																																																																																																																																								
8:20	11:30	190	1038	1049	R	10		3.17	20/25	60	70	320	57	850	1050	200																																																																																																																																																																																																																																																																																																																																																																																																																																																																																																																																																																																																																																																																																																																																																																																																																																																																																																																																																																																																																																																																																																																																																																																																																																																								
11:35	13:15	100	1049	1059	R	10		1.67	15/25	60	70	320	57	850	1000	150																																																																																																																																																																																																																																																																																																																																																																																																																																																																																																																																																																																																																																																																																																																																																																																																																																																																																																																																																																																																																																																																																																																																																																																																																																																								
13:25	14:21	56	1059	1064	O	5	5	0.85	25/30	170L		320	57	850	1150	300																																																																																																																																																																																																																																																																																																																																																																																																																																																																																																																																																																																																																																																																																																																																																																																																																																																																																																																																																																																																																																																																																																																																																																																																																																																								
14:21	15:18	57	1064	1068	R	4		0.95	25	60	70	320	57	850	1100	250	MWD Failure	POOH							14/12/09																																																																																																																																																																																																																																																																																																																																																																																																																																																																																																																																																																																																																																																																																																																																																																																																																																																																																																																																																																																																																																																																																																																																																																																																																																															
15:20	17:10	110	1068	1073	R	5	140	-0.50	25	60	70	320	57	850	1100	250	1058	13.69	9.05																																																																																																																																																																																																																																																																																																																																																																																																																																																																																																																																																																																																																																																																																																																																																																																																																																																																																																																																																																																																																																																																																																																																																																																																																																																					
20:45	21:19	34	1073	1076	R	3	40	-0.10	20	60	60	394	58	1200	1300	100																																																																																																																																																																																																																																																																																																																																																																																																																																																																																																																																																																																																																																																																																																																																																																																																																																																																																																																																																																																																																																																																																																																																																																																																																																																								
21:44	22:05	21	1076	1078	O	2	20	0.02	25/30	120L		394	58	1200	1350	150																																																																																																																																																																																																																																																																																																																																																																																																																																																																																																																																																																																																																																																																																																																																																																																																																																																																																																																																																																																																																																																																																																																																																																																																																																																								
22:05	22:35	30	1078	1082	O	4	5	0.42	30	180		394	58	1200	1350	150																																																																																																																																																																																																																																																																																																																																																																																																																																																																																																																																																																																																																																																																																																																																																																																																																																																																																																																																																																																																																																																																																																																																																																																																																																																								
22:35	23:02	27	1082	1086	R	4	5	0.37	25	60	75	394	58	1200	1300	100																																																																																																																																																																																																																																																																																																																																																																																																																																																																																																																																																																																																																																																																																																																																																																																																																																																																																																																																																																																																																																																																																																																																																																																																																																																								
23:02	0:00	58	1086	1090	R	4		0.97	25	60	75	394	58	1200	1300	100																																																																																																																																																																																																																																																																																																																																																																																																																																																																																																																																																																																																																																																																																																																																																																																																																																																																																																																																																																																																																																																																																																																																																																																																																																																								
0:00	0:30	50	1090	1095	R	5		0.50	25	60	75	394	58	1200	1350	150	1087	11.04	359.55						15/12/09																																																																																																																																																																																																																																																																																																																																																																																																																																																																																																																																																																																																																																																																																																																																																																																																																																																																																																																																																																																																																																																																																																																																																																																																																																															
0:40	1:57	77	1095	1105	R	10	5	1.20	25	60	70	394	58	1200	1350	150	1116	9.18	347.14																																																																																																																																																																																																																																																																																																																																																																																																																																																																																																																																																																																																																																																																																																																																																																																																																																																																																																																																																																																																																																																																																																																																																																																																																																																					
2:12	3:35	83	1105	1110	O	5	5	1.30	35	180		394	58	1200	1350	150	1145	8.29	327.53																																																																																																																																																																																																																																																																																																																																																																																																																																																																																																																																																																																																																																																																																																																																																																																																																																																																																																																																																																																																																																																																																																																																																																																																																																																					
3:35	4:25	50	1110	1114	R	4		0.83	25	60	70	394	58	1200	1350	150	1173	7.50	310.05																																																																																																																																																																																																																																																																																																																																																																																																																																																																																																																																																																																																																																																																																																																																																																																																																																																																																																																																																																																																																																																																																																																																																																																																																																																					
4:30	6:20	110	1114	1123	R	9	5	1.75	25	60	70	394	58	1200	1350	150																																																																																																																																																																																																																																																																																																																																																																																																																																																																																																																																																																																																																																																																																																																																																																																																																																																																																																																																																																																																																																																																																																																																																																																																																																																								
6:25	7:54	89	1123	1132	R	9		1.48	25	60	70	394	58	1200	1350	150																																																																																																																																																																																																																																																																																																																																																																																																																																																																																																																																																																																																																																																																																																																																																																																																																																																																																																																																																																																																																																																																																																																																																																																																																																																								
8:08	9:40	92	1132	1140	O	8	5	1.45	35	180		394	58	1250	1400	150																																																																																																																																																																																																																																																																																																																																																																																																																																																																																																																																																																																																																																																																																																																																																																																																																																																																																																																																																																																																																																																																																																																																																																																																																																																								
9:40	10:08	28	1140	1142	R	2		0.47	25	60	75	394	58	1250	1350	100																																																																																																																																																																																																																																																																																																																																																																																																																																																																																																																																																																																																																																																																																																																																																																																																																																																																																																																																																																																																																																																																																																																																																																																																																																																								
10:17	12:40	143	1142	1151	R	9		2.38	25	60	75	394	58	1250	1350	100																																																																																																																																																																																																																																																																																																																																																																																																																																																																																																																																																																																																																																																																																																																																																																																																																																																																																																																																																																																																																																																																																																																																																																																																																																																								
12:45	14:55	130	1151	1160	R	9	5	2.08	25	60	75	395	58	1250	1350	100																																																																																																																																																																																																																																																																																																																																																																																																																																																																																																																																																																																																																																																																																																																																																																																																																																																																																																																																																																																																																																																																																																																																																																																																																																																								
15:35	16:45	70	1160	1170	O	10	25	0.75	35	180		395	58	1250	1350	100	R/G service																																																																																																																																																																																																																																																																																																																																																																																																																																																																																																																																																																																																																																																																																																																																																																																																																																																																																																																																																																																																																																																																																																																																																																																																																																																							
16:55	19:10	135	1170	1180	R	10		2.25	25	60	75	395	58	1250	1350	100																																																																																																																																																																																																																																																																																																																																																																																																																																																																																																																																																																																																																																																																																																																																																																																																																																																																																																																																																																																																																																																																																																																																																																																																																																																								
19:10	20:30	80	1180	1188	R	8	5	1.25	25	60	75	395	58	1250	1350	100																																																																																																																																																																																																																																																																																																																																																																																																																																																																																																																																																																																																																																																																																																																																																																																																																																																																																																																																																																																																																																																																																																																																																																																																																																																								
20:35	22:00	85	1188	1197	O	9	5	1.33	35	180		395	58	1250	1350	100																																																																																																																																																																																																																																																																																																																																																																																																																																																																																																																																																																																																																																																																																																																																																																																																																																																																																																																																																																																																																																																																																																																																																																																																																																																								
22:00	22:20	20	1197	1199	R	1.6		0.33	25	60	75	395	58	1250	1350	100																																																																																																																																																																																																																																																																																																																																																																																																																																																																																																																																																																																																																																																																																																																																																																																																																																																																																																																																																																																																																																																																																																																																																																																																																																																								
22:30	0:00	90	1198.6	1207	R	8.4		1.50	25	60	75	395	58	1250	1350	100																																																																																																																																																																																																																																																																																																																																																																																																																																																																																																																																																																																																																																																																																																																																																																																																																																																																																																																																																																																																																																																																																																																																																																																																																																																								
0:00	1:30	90	1207	1217	R	10	5	1.42	25	60	75	395	58	1250	1350	100	1201	7.49	291.65						16/12/09																																																																																																																																																																																																																																																																																																																																																																																																																																																																																																																																																																																																																																																																																																																																																																																																																																																																																																																																																																																																																																																																																																																																																																																																																																															
1:45	2:54	69	1217	1225	O	8		1.15	35	150L		395	58	1250	1400	150	1230	8.27	273.90																																																																																																																																																																																																																																																																																																																																																																																																																																																																																																																																																																																																																																																																																																																																																																																																																																																																																																																																																																																																																																																																																																																																																																																																																																																					
3:15	4:20	65	1225	1236	R	9		0.13	25	60	80	395	58	1250	1400	150																																																																																																																																																																																																																																																																																																																																																																																																																																																																																																																																																																																																																																																																																																																																																																																																																																																																																																																																																																																																																																																																																																																																																																																																																																																								
4:30	6:00	90	1236	1245	R	9	5	1.08	25	60	80	395	58	1250	1450	200																																																																																																																																																																																																																																																																																																																																																																																																																																																																																																																																																																																																																																																																																																																																																																																																																																																																																																																																																																																																																																																																																																																																																																																																																																																								
6:25	7:00	35	1245	1246	O	1	35	0.00	35	180		395	58	1250	1500	250																																																																																																																																																																																																																																																																																																																																																																																																																																																																																																																																																																																																																																																																																																																																																																																																																																																																																																																																																																																																																																																																																																																																																																																																																																																								
18:45	19:42	57	1246	1254	R	8	60	-0.05	35	60	80	395	58	1250	1400	150	New bit																																																																																																																																																																																																																																																																																																																																																																																																																																																																																																																																																																																																																																																																																																																																																																																																																																																																																																																																																																																																																																																																																																																																																																																																																																																							
20:00	22:40	120	1254	1264	R	10	10	1.83	25	60	80	395	58	1250	1400	150																																																																																																																																																																																																																																																																																																																																																																																																																																																																																																																																																																																																																																																																																																																																																																																																																																																																																																																																																																																																																																																																																																																																																																																																																																																								
22:05	23:40	95	1264	1273	R	9	5	1.50	25	60	80	395	58	1250	1400	150																																																																																																																																																																																																																																																																																																																																																																																																																																																																																																																																																																																																																																																																																																																																																																																																																																																																																																																																																																																																																																																																																																																																																																																																																																																								
0:11	2:05	114	1273	1281	O	8	20	1.57	35	180		407	60	1350	1450	100	Pump #1 too noisy. No toolfaces																																																																																																																																																																																																																																																																																																																																																																																																																																																																																																																																																																																																																																																																																																																																																																																																																																																																																																																																																																																																																																																																																																																																																																																																																																																							
2:05	2:20	15	1281	1283	R	2	5	0.17	25	60	80	394	58	1250	1450	200																																																																																																																																																																																																																																																																																																																																																																																																																																																																																																																																																																																																																																																																																																																																																																																																																																																																																																																																																																																																																																																																																																																																																																																																																																																								
2:25	4:45	140	1283	1293	R	10		2.33	25	60	80	394	58	1250	1450	200																																																																																																																																																																																																																																																																																																																																																																																																																																																																																																																																																																																																																																																																																																																																																																																																																																																																																																																																																																																																																																																																																																																																																																																																																																																								
4:50	6:29	99	1293	1302	R	9	5	1.57	25	60	80	394	58	1250	1400	150																																																																																																																																																																																																																																																																																																																																																																																																																																																																																																																																																																																																																																																																																																																																																																																																																																																																																																																																																																																																																																																																																																																																																																																																																																																								
6:45	8:00	75	1302	1311	O	9	5	1.17	35	180		394	58	1250	1400	150																																																																																																																																																																																																																																																																																																																																																																																																																																																																																																																																																																																																																																																																																																																																																																																																																																																																																																																																																																																																																																																																																																																																																																																																																																																								
8:22	8:40	18	1311	1313	O	2		0.30	35	180		407	60	1350	1600	150																																																																																																																																																																																																																																																																																																																																																																																																																																																																																																																																																																																																																																																																																																																																																																																																																																																																																																																																																																																																																																																																																																																																																																																																																																																								
10:05	11:00	55	1320	1326	R	7	5	1.23	25	60	90	394	58	1250	1350	100	Hole TD Decision made to sidetrack hole																																																																																																																																																																																																																																																																																																																																																																																																																																																																																																																																																																																																																																																																																																																																																																																																																																																																																																																																																																																																																																																																																																																																																																																																																																																							

14/12/2019	16/12/2019	18/12/2019	20/12/2019	22/12/2019	24/12/2019	26/12/2019	28/12/2019	30/12/2019	31/12/2019	01/01/2020	03/01/2020	05/01/2020	07/01/2020	09/01/2020	11/01/2020	13/01/2020	15/01/2020	17/01/2020	19/01/2020	21/01/2020	23/01/2020	25/01/2020	27/01/2020	29/01/2020	31/01/2020	02/02/2020	04/02/2020	06/02/2020	08/02/2020	10/02/2020	12/02/2020	14/02/2020	16/02/2020	18/02/2020	20/02/2020	22/02/2020	24/02/2020	26/02/2020	28/02/2020	01/03/2020	03/03/2020	05/03/2020	07/03/2020	09/03/2020	11/03/2020	13/03/2020	15/03/2020	17/03/2020	19/03/2020	21/03/2020	23/03/2020	25/03/2020	27/03/2020	29/03/2020	31/03/2020	02/04/2020	04/04/2020	06/04/2020	08/04/2020	10/04/2020	12/04/2020	14/04/2020	16/04/2020	18/04/2020	20/04/2020	22/04/2020	24/04/2020	26/04/2020	28/04/2020	30/04/2020	02/05/2020	04/05/2020	06/05/2020	08/05/2020	10/05/2020	12/05/2020	14/05/2020	16/05/2020	18/05/2020	20/05/2020	22/05/2020	24/05/2020	26/05/2020	28/05/2020	30/05/2020	01/06/2020	03/06/2020	05/06/2020	07/06/2020	09/06/2020	11/06/2020	13/06/2020	15/06/2020	17/06/2020	19/06/2020	21/06/2020	23/06/2020	25/06/2020	27/06/2020	29/06/2020	01/07/2020	03/07/2020	05/07/2020	07/07/2020	09/07/2020	11/07/2020	13/07/2020	15/07/2020	17/07/2020	19/07/2020	21/07/2020	23/07/2020	25/07/2020	27/07/2020	29/07/2020	31/07/2020	02/08/2020	04/08/2020	06/08/2020	08/08/2020	10/08/2020	12/08/2020	14/08/2020	16/08/2020	18/08/2020	20/08/2020	22/08/2020	24/08/2020	26/08/2020	28/08/2020	30/08/2020	01/09/2020	03/09/2020	05/09/2020	07/09/2020	09/09/2020	11/09/2020	13/09/2020	15/09/2020	17/09/2020	19/09/2020	21/09/2020	23/09/2020	25/09/2020	27/09/2020	29/09/2020	01/10/2020	03/10/2020	05/10/2020	07/10/2020	09/10/2020	11/10/2020	13/10/2020	15/10/2020	17/10/2020	19/10/2020	21/10/2020	23/10/2020	25/10/2020	27/10/2020	29/10/2020	31/10/2020	02/11/2020	04/11/2020	06/11/2020	08/11/2020	10/11/2020	12/11/2020	14/11/2020	16/11/2020	18/11/2020	20/11/2020	22/11/2020	24/11/2020	26/11/2020	28/11/2020	30/11/2020	01/12/2020	03/12/2020	05/12/2020	07/12/2020	09/12/2020	11/12/2020	13/12/2020	15/12/2020	17/12/2020	19/12/2020	21/12/2020	23/12/2020	25/12/2020	27/12/2020	29/12/2020	31/12/2020	01/01/2021	03/01/2021	05/01/2021	07/01/2021	09/01/2021	11/01/2021	13/01/2021	15/01/2021	17/01/2021	19/01/2021	21/01/2021	23/01/2021	25/01/2021	27/01/2021	29/01/2021	31/01/2021	02/02/2021	04/02/2021	06/02/2021	08/02/2021	10/02/2021	12/02/2021	14/02/2021	16/02/2021	18/02/2021	20/02/2021	22/02/2021	24/02/2021	26/02/2021	28/02/2021	01/03/2021	03/03/2021	05/03/2021	07/03/2021	09/03/2021	11/03/2021	13/03/2021	15/03/2021	17/03/2021	19/03/2021	21/03/2021	23/03/2021	25/03/2021	27/03/2021	29/03/2021	31/03/2021	02/04/2021	04/04/2021	06/04/2021	08/04/2021	10/04/2021	12/04/2021	14/04/2021	16/04/2021	18/04/2021	20/04/2021	22/04/2021	24/04/2021	26/04/2021	28/04/2021	30/04/2021	02/05/2021	04/05/2021	06/05/2021	08/05/2021	10/05/2021	12/05/2021	14/05/2021	16/05/2021	18/05/2021	20/05/2021	22/05/2021	24/05/2021	26/05/2021	28/05/2021	30/05/2021	01/06/2021	03/06/2021	05/06/2021
------------	------------	------------	------------	------------	------------	------------	------------	------------	------------	------------	------------	------------	------------	------------	------------	------------	------------	------------	------------	------------	------------	------------	------------	------------	------------	------------	------------	------------	------------	------------	------------	------------	------------	------------	------------	------------	------------	------------	------------	------------	------------	------------	------------	------------	------------	------------	------------	------------	------------	------------	------------	------------	------------	------------	------------	------------	------------	------------	------------	------------	------------	------------	------------	------------	------------	------------	------------	------------	------------	------------	------------	------------	------------	------------	------------	------------	------------	------------	------------	------------	------------	------------	------------	------------	------------	------------	------------	------------	------------	------------	------------	------------	------------	------------	------------	------------	------------	------------	------------	------------	------------	------------	------------	------------	------------	------------	------------	------------	------------	------------	------------	------------	------------	------------	------------	------------	------------	------------	------------	------------	------------	------------	------------	------------	------------	------------	------------	------------	------------	------------	------------	------------	------------	------------	------------	------------	------------	------------	------------	------------	------------	------------	------------	------------	------------	------------	------------	------------	------------	------------	------------	------------	------------	------------	------------	------------	------------	------------	------------	------------	------------	------------	------------	------------	------------	------------	------------	------------	------------	------------	------------	------------	------------	------------	------------	------------	------------	------------	------------	------------	------------	------------	------------	------------	------------	------------	------------	------------	------------	------------	------------	------------	------------	------------	------------	------------	------------	------------	------------	------------	------------	------------	------------	------------	------------	------------	------------	------------	------------	------------	------------	------------	------------	------------	------------	------------	------------	------------	------------	------------	------------	------------	------------	------------	------------	------------	------------	------------	------------	------------	------------	------------	------------	------------	------------	------------	------------	------------	------------	------------	------------	------------	------------	------------	------------	------------	------------	------------	------------	------------	------------	------------	------------	------------	------------	------------	------------	------------	------------	------------	------------	------------	------------	------------	------------	------------	------------	------------	------------	------------	------------	------------

8 Weatherford Directional Drilling Observations

Disappointments:

None. The tools performed as expected for the entirety of the well.

Recommendations for Improvement:

The Hunt Rig # 3 was not set up for directional work. Pumps were sub standard, the drill string needed to be cleaned and the table was difficult to orientate accurately. The rig was at its limits drilling 1700m and needs considerable maintenance work to be considered for further use in directional wells.

Recommend two directional drillers to be on site at all times, when we are required to slide. Due to the need to slide as much as we did it became a fatigue management issue that we only had one DD on site for 5 days, while continuously sliding.

Use of 30 degree pulser orifice to overcome signal detection issues associated with rig duplex pumps.

Rig pump selection to allow for greater flow rates.

9 Definitive Survey

Overseas Energy Holdings

Tasmania

Site #1

Westwood-1

Westwood-1

Design: Westwood-1

Standard Survey Report

09 February, 2010

Weatherford International Ltd. Survey Report

Company:	Overseas Energy Holdings		Local Co-ordinate Reference:		Well Westwood-1	
Project:	Tasmania		TVD Reference:		WELL @ 149.00m (Original Well Elev)	
Site:	Site #1		MD Reference:		WELL @ 149.00m (Original Well Elev)	
Well:	Westwood-1		North Reference:		Grid	
Wellbore:	Westwood-1		Survey Calculation Method:		Minimum Curvature	
Design:	Westwood-1		Database:		EDM 2003.21 Single User Db	

Project	Tasmania				
Map System:	Universal Transverse Mercator		System Datum:	Mean Sea Level	
Geo Datum:	WGS 1984				
Map Zone:	Zone 55S (144 E to 150 E)				

Site	Site #1				
Site Position:		Northing:	5,403,564.16 m	Latitude:	41° 31' 10.400 S
From:	Map	Easting:	502,867.01 m	Longitude:	147° 2' 3.700 E
Position Uncertainty:	0.00 m	Slot Radius:	in	Grid Convergence:	-0.02 °

Well	Westwood-1					
Well Position	+N/-S	0.00 m	Northing:	5,403,564.16 m	Latitude:	41° 31' 10.400 S
	+E/-W	0.00 m	Easting:	502,867.01 m	Longitude:	147° 2' 3.700 E
Position Uncertainty		0.00 m	Wellhead Elevation:	m	Ground Level:	145.00 m

Wellbore	Westwood-1				
Magnetics	Model Name	Sample Date	Declination (°)	Dip Angle (°)	Field Strength (nT)
	BGGM2009	12/9/2009	13.96	-71.57	61,544

Design	Westwood-1				
Audit Notes:					
Version:	1.0	Phase:	ACTUAL	Tie On Depth:	766.65
Vertical Section:	Depth From (TVD)	+N/-S	+E/-W	Direction	
	(m)	(m)	(m)	(°)	
	0.00	0.00	0.00	346.00	

Survey Program	Date		2/9/2010		
From (m)	To (m)	Survey (Wellbore)	Tool Name	Description	
327.02	766.65	Survey #1 (Vertical)	MWD	MWD - Standard	
790.68	907.79	Survey #1 (Westwood-1)	MWD	MWD - Standard	
917.49	993.03	Survey #2 (Westwood-1)	MWD	MWD - Standard	
1,002.49	1,020.23	Survey #3 (Westwood-1)	MWD	MWD - Standard	
1,039.29	1,519.95	Survey #4 (Westwood-1)	MWD	MWD - Standard	
1,529.57	1,596.16	Survey #5 (Westwood-1)	MWD	MWD - Standard	
1,605.77	1,679.00	Survey #6 (Westwood-1)	MWD	MWD - Standard	

Survey										
Measured Depth (m)	Inclination (°)	Azimuth (°)	Vertical Depth (m)	+N/-S (m)	+E/-W (m)	Vertical Section (m)	Dogleg Rate (°/30m)	Build Rate (°/30m)	Turn Rate (°/30m)	
0.00	0.00	0.00	0.00	0.00	0.00	0.00	0.000	0.00	0.00	
327.02	1.69	81.54	326.97	0.71	4.77	-0.47	0.155	0.16	0.00	
362.65	1.76	81.81	362.59	0.86	5.83	-0.57	0.059	0.06	0.23	
400.65	1.46	329.20	400.58	1.36	6.16	-0.17	2.119	-0.24	-88.90	
438.65	1.32	335.92	438.57	2.18	5.73	0.73	0.169	-0.11	5.31	
476.65	1.48	336.45	476.56	3.03	5.36	1.64	0.127	0.13	0.42	
512.65	1.79	339.05	512.54	3.98	4.97	2.66	0.266	0.26	2.17	

2/9/2010 2:25:32PM

Page 2

COMPASS 2003.21 Build 40

Overseas Energy Holdings
Westwood 1
Hunt Energy – Rig #3

Weatherford International Ltd.

Survey Report

Company:	Overseas Energy Holdings	Local Co-ordinate Reference:	Well Westwood-1
Project:	Tasmania	TVD Reference:	WELL @ 149.00m (Original Well Elev)
Site:	Site #1	MD Reference:	WELL @ 149.00m (Original Well Elev)
Well:	Westwood-1	North Reference:	Grid
Wellbore:	Westwood-1	Survey Calculation Method:	Minimum Curvature
Design:	Westwood-1	Database:	EDM 2003.21 Single User Db

Survey									
Measured Depth (m)	Inclination (°)	Azimuth (°)	Vertical Depth (m)	+N/-S (m)	+E/-W (m)	Vertical Section (m)	Dogleg Rate (°/30m)	Build Rate (°/30m)	Turn Rate (°/30m)
550.65	1.73	348.99	550.52	5.10	4.65	3.82	0.245	-0.05	7.85
625.65	2.14	8.53	625.48	7.59	4.64	6.24	0.308	0.16	7.82
701.65	2.33	14.84	701.42	10.49	5.25	8.91	0.123	0.07	2.49
739.65	2.61	13.37	739.39	12.08	5.65	10.35	0.227	0.22	-1.16
766.65	2.71	18.25	766.36	13.28	5.99	11.44	0.275	0.11	5.43
790.68	3.03	19.66	790.36	14.42	6.38	12.45	0.411	0.40	1.75
803.49	3.24	20.29	803.15	15.08	6.62	13.03	0.498	0.49	1.48
813.92	3.82	23.86	813.56	15.67	6.86	13.55	1.783	1.67	10.27
832.45	4.09	23.79	832.05	16.84	7.38	14.56	0.437	0.44	-0.11
841.90	3.93	15.30	841.47	17.46	7.60	15.10	1.950	-0.51	-26.95
850.77	3.78	346.55	850.32	18.04	7.61	15.66	6.488	-0.51	-97.24
860.33	3.71	357.51	859.86	18.66	7.53	16.28	2.254	-0.22	34.39
879.37	7.43	333.06	878.81	20.37	6.94	18.08	6.826	5.86	-38.52
888.87	7.37	331.30	888.23	21.45	6.37	19.27	0.740	-0.19	-5.56
898.30	7.80	336.87	897.58	22.57	5.83	20.49	2.708	1.37	17.72
907.79	6.16	351.80	907.00	23.67	5.50	21.63	7.690	-5.18	47.20
917.49	4.31	0.99	916.66	24.55	5.43	22.50	6.264	-5.72	28.42
926.77	3.78	12.61	925.92	25.19	5.51	23.11	3.147	-1.71	37.56
936.18	3.80	8.33	935.31	25.80	5.62	23.68	0.904	0.06	-13.65
945.94	3.97	20.30	945.04	26.44	5.78	24.26	2.542	0.52	36.79
955.41	5.21	9.49	954.48	27.17	5.97	24.92	4.773	3.93	-34.24
965.06	4.99	10.39	964.10	28.02	6.12	25.71	0.728	-0.68	2.80
974.49	6.01	16.17	973.48	28.90	6.33	26.51	3.689	3.24	18.39
983.40	6.85	15.19	982.34	29.86	6.60	27.37	2.852	2.83	-3.30
993.03	7.46	17.67	991.89	31.01	6.94	28.41	2.130	1.90	7.73
1,002.49	6.73	10.22	1,001.28	32.14	7.22	29.43	3.720	-2.32	-23.63
1,011.33	6.89	11.00	1,010.06	33.17	7.42	30.39	0.627	0.54	2.65
1,020.23	6.09	4.30	1,018.90	34.16	7.55	31.32	3.709	-2.70	-22.58
1,039.29	4.68	307.25	1,037.89	35.64	7.01	32.89	8.318	-2.22	-89.80
1,057.72	4.04	237.83	1,056.28	35.75	5.86	33.27	8.123	-1.04	-113.00
1,066.95	3.62	239.69	1,065.48	35.43	5.33	33.09	1.423	-1.37	6.05
1,076.64	3.12	255.63	1,075.16	35.21	4.81	33.00	3.273	-1.55	49.35
1,085.77	3.25	250.15	1,084.27	35.06	4.33	32.97	1.087	0.43	-18.01
1,098.05	5.20	303.71	1,096.52	35.25	3.54	33.35	10.222	4.76	130.85
1,107.58	7.34	314.52	1,106.00	35.92	2.75	34.19	7.665	6.74	34.03
1,117.22	9.10	319.84	1,115.54	36.93	1.82	35.40	5.961	5.48	16.56
1,126.42	8.71	317.80	1,124.63	38.01	0.88	36.66	1.636	-1.27	-6.65
1,135.59	6.39	314.77	1,133.72	38.88	0.05	37.71	7.698	-7.59	-9.91
1,144.89	3.29	320.98	1,142.98	39.45	-0.49	38.40	10.127	-10.00	20.03
1,154.57	1.58	324.19	1,152.65	39.78	-0.74	38.77	5.314	-5.30	9.95
1,164.16	1.74	325.21	1,162.24	40.00	-0.90	39.03	0.509	0.50	3.19
1,173.53	2.13	291.91	1,171.60	40.18	-1.14	39.27	3.746	1.25	-106.62
1,182.65	2.87	283.46	1,180.72	40.30	-1.52	39.47	2.713	2.43	-27.80
1,192.28	3.60	279.35	1,190.33	40.41	-2.05	39.70	2.385	2.27	-12.80
1,201.59	4.12	273.45	1,199.62	40.47	-2.68	39.92	2.106	1.68	-19.01
1,211.06	3.44	260.38	1,209.07	40.45	-3.30	40.04	3.464	-2.15	-41.40
1,220.63	2.74	214.09	1,218.63	40.21	-3.71	39.91	7.875	-2.19	-145.11
1,229.59	3.47	189.01	1,227.57	39.76	-3.87	39.52	5.104	2.44	-83.97
1,239.14	4.06	188.67	1,237.10	39.14	-3.97	38.84	1.855	1.85	-1.07
1,248.68	3.92	192.53	1,246.62	38.49	-4.09	38.34	0.952	-0.44	12.14
1,258.16	2.01	201.26	1,256.09	38.02	-4.22	37.91	6.194	-6.04	27.63
1,267.71	0.85	16.45	1,265.64	37.93	-4.26	37.84	8.978	-3.64	550.34
1,277.32	3.43	25.84	1,275.24	38.26	-4.11	38.12	8.101	8.05	29.31
1,286.79	4.56	19.16	1,284.68	38.87	-3.87	38.65	3.866	3.58	-21.16

2/9/2010 2:25:32PM

Page 3

COMPASS 2003.21 Build 40

Overseas Energy Holdings
Westwood 1
Hunt Energy – Rig #3

Weatherford International Ltd. Survey Report

Company:	Overseas Energy Holdings	Local Co-ordinate Reference:	Well Westwood-1
Project:	Tasmania	TVD Reference:	WELL @ 149.00m (Original Well Elev)
Site:	Site #1	MD Reference:	WELL @ 149.00m (Original Well Elev)
Well:	Westwood-1	North Reference:	Grid
Wellbore:	Westwood-1	Survey Calculation Method:	Minimum Curvature
Design:	Westwood-1	Database:	EDM 2003.21 Single User Db

Survey									
Measured Depth (m)	Inclination (°)	Azimuth (°)	Vertical Depth (m)	+N/-S (m)	+E/-W (m)	Vertical Section (m)	Dogleg Rate (°/30m)	Build Rate (°/30m)	Turn Rate (°/30m)
1,296.02	3.00	14.61	1,293.89	39.45	-3.69	39.17	5.159	-5.07	-14.79
1,314.57	0.78	302.46	1,312.43	39.99	-3.67	39.69	4.624	-3.59	-116.68
1,333.01	1.02	272.16	1,330.87	40.06	-3.94	39.82	0.853	0.39	-49.30
1,341.89	0.74	138.58	1,339.75	40.02	-3.98	39.80	5.477	-0.95	-451.28
1,350.99	3.17	119.67	1,348.85	39.85	-3.72	39.57	8.181	8.01	-62.34
1,360.55	5.28	114.06	1,358.38	39.54	-3.09	39.12	6.739	6.62	-17.60
1,371.80	6.12	112.01	1,369.57	39.11	-2.06	38.44	2.305	2.24	-5.47
1,381.11	5.65	112.47	1,378.83	38.75	-1.18	37.88	1.522	-1.51	1.48
1,390.01	4.95	109.81	1,387.70	38.45	-0.41	37.41	2.500	-2.36	-8.97
1,399.27	4.23	96.47	1,396.93	38.27	0.30	37.06	4.156	-2.33	-43.22
1,408.81	4.18	72.54	1,406.44	38.34	0.98	36.96	5.480	-0.16	-75.25
1,418.42	5.15	53.27	1,416.02	38.70	1.66	37.15	5.712	3.03	-60.16
1,427.26	5.54	45.78	1,424.82	39.24	2.29	37.52	2.710	1.32	-25.42
1,436.90	5.42	35.39	1,434.42	39.93	2.88	38.05	3.106	-0.37	-32.33
1,446.25	4.34	13.91	1,443.74	40.64	3.23	38.65	6.750	-3.47	-68.92
1,455.69	4.04	348.78	1,453.15	41.31	3.25	39.30	5.863	-0.95	-79.86
1,464.90	4.18	336.24	1,462.34	41.93	3.05	39.95	2.957	0.46	-40.85
1,474.50	4.36	339.29	1,471.91	42.60	2.78	40.66	0.905	0.56	9.53
1,483.85	4.80	337.44	1,481.23	43.29	2.50	41.40	1.489	1.41	-5.94
1,493.44	5.48	326.78	1,490.78	44.04	2.10	42.23	3.659	2.13	-33.35
1,500.78	5.36	315.25	1,498.09	44.58	1.66	42.85	4.471	-0.49	-47.13
1,510.34	6.59	295.23	1,507.60	45.13	0.85	43.58	7.536	3.86	-62.82
1,519.95	8.60	278.70	1,517.12	45.47	-0.36	44.21	9.207	6.27	-51.60
1,529.57	10.26	268.54	1,526.62	45.56	-1.92	44.67	7.312	5.18	-31.68
1,539.10	11.17	263.96	1,535.98	45.44	-3.69	44.99	3.921	2.86	-14.42
1,548.71	11.40	259.63	1,545.40	45.17	-5.55	45.18	2.740	0.72	-13.52
1,558.28	11.28	258.30	1,554.79	44.81	-7.40	45.27	0.902	-0.38	-4.17
1,567.83	10.77	260.43	1,564.16	44.48	-9.19	45.38	2.050	-1.60	6.69
1,576.96	11.41	262.89	1,573.12	44.22	-10.93	45.55	2.615	2.10	8.08
1,586.13	12.25	265.84	1,582.10	44.04	-12.80	45.83	3.385	2.75	9.65
1,596.16	13.13	266.31	1,591.88	43.89	-15.00	46.21	2.650	2.63	1.41
1,598.88	13.42	267.27	1,594.53	43.85	-15.62	46.33	3.990	3.17	10.56
Target									
1,605.77	14.16	269.52	1,601.22	43.81	-17.26	46.68	3.990	3.23	9.81
1,615.33	15.82	280.80	1,610.46	44.04	-19.71	47.50	10.510	5.21	35.40
1,624.76	17.54	290.14	1,619.49	44.77	-22.31	48.84	10.116	5.47	29.71
1,634.61	19.58	299.24	1,628.83	46.09	-25.14	50.81	10.773	6.21	27.72
1,644.04	21.26	306.36	1,637.67	47.88	-27.90	53.21	9.532	5.34	22.65
1,653.37	22.09	312.83	1,646.34	50.07	-30.55	55.98	8.129	2.67	20.80
1,662.86	22.46	319.12	1,655.12	52.66	-33.05	59.09	7.624	1.17	19.88
1,679.00	22.46	319.12	1,670.04	57.32	-37.08	64.59	0.000	0.00	0.00

Survey Point at 1679m MD is a Projection

Weatherford International Ltd. Survey Report

Company:	Overseas Energy Holdings	Local Co-ordinate Reference:	Well Westwood-1
Project:	Tasmania	TVD Reference:	WELL @ 149.00m (Original Well Elev)
Site:	Site #1	MD Reference:	WELL @ 149.00m (Original Well Elev)
Well:	Westwood-1	North Reference:	Grid
Wellbore:	Westwood-1	Survey Calculation Method:	Minimum Curvature
Design:	Westwood-1	Database:	EDM 2003.21 Single User Db

Design Targets									
Target Name	Dip Angle	Dip Dir.	TVD	+N/-S	+E/-W	Northing	Easting	Latitude	Longitude
- hit/miss target	(°)	(°)	(m)	(m)	(m)	(m)	(m)		
- Shape									
Target 2	0.00	360.00	1,600.00	45.07	-2.84	5,403,609.23	502,864.17	41° 31' 8.939 S	147° 2' 3.577 E
- actual wellpath misses target center by 13.76m at 1601.14m MD (1596.73 TVD, 43.83 N, -16.15 E)									
- Circle (radius 5.00)									
Target	0.00	0.00	1,600.00	43.17	6.97	5,403,607.33	502,873.98	41° 31' 9.000 S	147° 2' 4.000 E
- actual wellpath misses target center by 23.25m at 1598.88m MD (1594.53 TVD, 43.85 N, -15.62 E)									
- Circle (radius 20.00)									

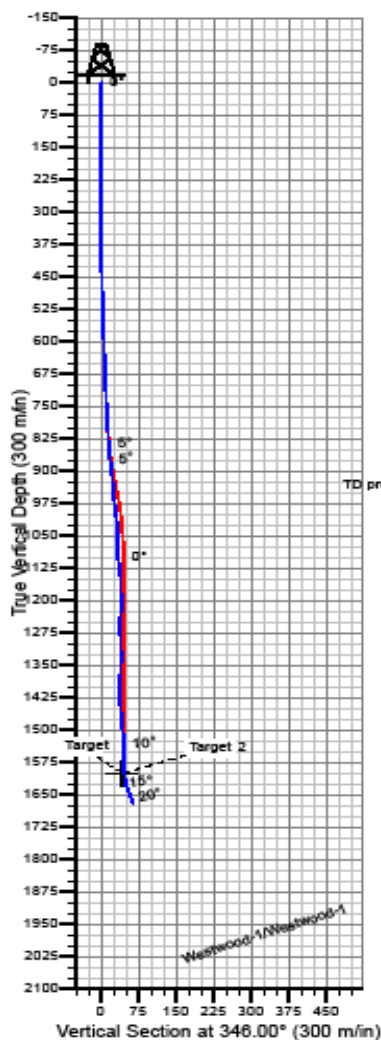
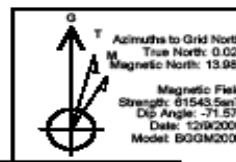
10 Comparison Plot



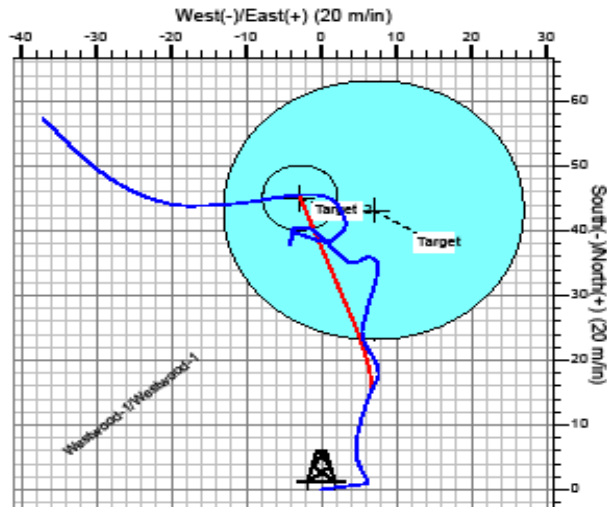
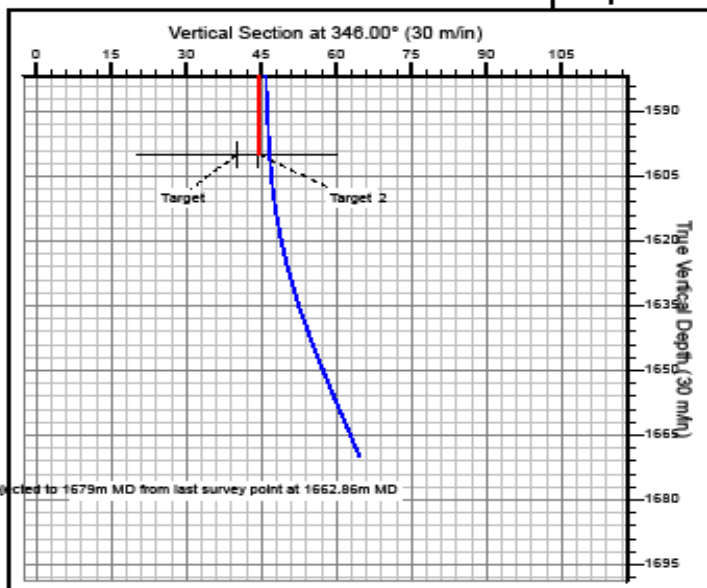
Weatherford®

Overseas Energy Holdings

Well: Westwood-1



Ground Level Elevation = 145m MSL
RKB above MSL = 149m



WELLBORE TARGET DETAILS (LAT/LONG)						
Name	TVD	+N/-S	+E/-W	Latitude	Longitude	Shape
Target	1600.00	43.17	8.97	41° 31' 9.000 S	147° 2' 4.000 E	Circle (Radius: 20.00)
Target 2	1600.00	45.07	-2.84	41° 31' 8.939 S	147° 2' 3.577 E	Circle (Radius: 5.00)

WELL DETAILS: Westwood-1						
+N/-S	+E/-W	Northing	Ground Level	145.00	Latitude	Longitude
0.00	0.00	5403564.16	Easting	502867.01	41° 31' 10.400 S	147° 2' 3.700 E

LEGEND	
—	Westwood-1, Planned Wellpath
—	Westwood-1, Actual Wellpath

Overseas Energy Holdings
Westwood 1
Hunt Energy – Rig #3



Weatherford®

11 Daily Activity Reports



Weatherford®

Daily Activity Report

Day 3 - 2009/12/11

Drilling Services

V4.2.26/5

FILE #: 1010101 WELL NAME: Westwood # 1 SERVICE CO.: Precision Energy Services
 JOB TYPE: COMPANY: Overseas Energy Holdings SURVEY TYPE:
 RIG & NO: Hunt Energy 3 SURFACE LOCATION: Haspden FIELD / LOCATION: Westwood / Tasmania / Australia

DIR Supervisor: Bob Fleming
 MWD Supervisor: Clive Pickering, Faheem Khan

GROUND ELEV: 0 START DEPTH: 0.0 PROGRESS: 0.0 DAILY COST: CAN\$0.00
 KB ELEV: 0 END DEPTH: 0.0 AVG. ROP: 0.0 PREVIOUS COST: CAN\$0.00
 TOTAL COST: CAN\$0.00

WORK STATUS: (All units are metric.)

TIME	DAILY ACTIVITY	HRS	DPTH	BHA	TIME	DAILY ACTIVITY	HRS	DPTH	BHA
00:00-13:30	Wait On Directional Tools	13.50	0	n/a	14:30-17:30	PU Directional Tools	3.00	0	2
13:30-14:30	Other - See Comments - tools arrive on site	1.00	0	n/a	17:30-24:00	Work On MWD	6.50	0	2

TIME SUMMARY (hrs):				DRILLING PARAMETERS:			
MOTOR DRILL: 0.00	ORIENTING HRS: 0.00	ROTARY DRILL: 0.00	ROTARY TORQUE:	STRING WEIGHT 0			
TIME DRILL: 0.00	ROTATING HRS: 0.00	MOTOR HRS: 0.00	WOB SLIDING (HI): 0	WOB ROTATE (HI): 0			
MOTOR REAM: 0.00		TRIP: 0.00	WOB SLIDING (LO): 0	WOB ROTATE (LO): 0			
CIRC: 0.00	ROTARY DRILL: 0.00	OTHER: 24.00	RPM (ROTARY):	DRAG UP: 0			
MOTOR HRS: 0.00	DRILL HRS: 0.00	TOTAL HRS: 24.00	RPM (MOTOR):	DRAG DN: 0			

— BHA / MOTOR / BIT INFORMATION: —

BHA: 2 HOLE SIZE: 8.5 SECTION TYPE: Drop & Hold SURVEY TYPE: Positive Pulse MWD
 MANFCT.: PES STABILIZER: No SERIAL#: 675-3196 MODEL: LOBE CFG. 6/7
 SETTING: 1.5 KICKPAD: No SIZE: 6 3/4" (171mm) MTR HRS THIS DAY: 0 MTR HRS TO DATE: 0
 MANFCT: Security BIT TYPE: Tri-Cone Bit TYPE: EBXS20DSD NOZZLES: 0.746 TFA
 IADC BIT GRADE: ? / ? / ? / ? / ? / ? / ? / ?

— PUMP PARAMETERS —

PRESSURE ON BTM: 0 PRESSURE OFF BTM: 0 TOTAL FLOW RATE: 0.00
 PUMP 1: TYPE: EFF.: 100.0% SPM: 0.00 LINER: 0.00 STROKE VOL.: 0.0000
 PUMP 2: TYPE: EFF.: 100.0% SPM: 0.00 LINER: 0.00 STROKE VOL.: 0.0000
 PUMP 3: TYPE: EFF.: 100.0% SPM: 0.00 LINER: 0.00 STROKE VOL.: 0.0000

— MUD RECORD —

MUD TYPE: VISC: 0 WTR LOSS: 0 PV: 0 YP: 0 pH: 0
 DENSITY: 0 GEL 0/10: 0.00 SAND: 0 SOLIDS: 0 OIL: 0 TEMP: 0
 LIQUID BASE: LIQUID RATE: 0 GAS TYPE: GAS RATE: 0

— COMMENTS: —

Directional and MWD tools arrive at 1330hrs. unload shack and tools. strap assembly and run motor in hole. test motor and orient to mudshoe. waiting while MWD crew ready tools and set up for test.





Weatherford®

Daily Activity Report

Day 4 - 2009/12/12

Drilling Services

V4.2.26/5

FILE#: 1010101

JOB TYPE:

RIG & NO: Hunt Energy 3

WELL NAME: Westwood # 1

COMPANY: Overseas Energy Holdings

SURFACE LOCATION: Haspden

SERVICE CO.: Precision Energy Services

SURVEY TYPE:

FIELD / LOCATION: Westwood / Tasmania / Australia

DIR Supervisor: Bob Fleming

MWD Supervisor: Clive Pickering, Faheem Khan

GROUND ELEV: 0

KB ELEV: 0

START DEPTH: 0.0

END DEPTH: 0.0

PROGRESS: 0.0

AVG. ROP: 0.0

DAILY COST: CAN\$0.00

PREVIOUS COST: CAN\$0.00

TOTAL COST: CAN\$0.00

WORK STATUS:

(All units are metric.)

TIME	DAILY ACTIVITY	HRS	DPH	BHA	TIME	DAILY ACTIVITY	HRS	DPH	BHA
00:00-05:00	Work On MWD	5.00	0	2	10:45-14:30	Shallow Test Tools - see comments	3.75	0	2
05:00-08:30	Shallow Test Tools - unable to get test	1.50	0	2	14:30-21:00	RIH With Directional	6.50	0	2
08:30-10:45	RIH With Directional	4.25	0	2	21:00-24:00	Orienting With Motor	3.00	0	2

TIME SUMMARY (hrs):

MOTOR DRILL: 3.00

TIME DRILL: 0.00

MOTOR REAM: 0.00

CIRC: 0.00

MOTOR HRS: 3.00

DRILL HRS: 3.00

TOTAL HRS: 24.00

DRILLING PARAMETERS:

ROTARY TORQUE:

WOB SLIDING (HI): 25000

WOB SLIDING (LO): 10000

RPM (ROTARY):

RPM (MOTOR): 90.56

STRING WEIGHT 98000

WOB ROTATE (HI): 0

WOB ROTATE (LO): 0

DRAG UP: 5000

DRAG DN: 2000

— BHA / MOTOR / BIT INFORMATION: —

BHA: 2

HOLE SIZE: 8.5

SECTION TYPE: Drop & Hold

SURVEY TYPE: Positive Pulse MWD

MANFCT.: PES

STABILIZER: No

SERIAL#: 675-3196

MODEL:

LOBE CFG.#/7

SETTING: 1.5

KICKPAD: No

SIZE: 6 3/4" (171mm)

MTR HRS THIS DAY: 3

MTR HRS TO DATE: 3

MANFCT: Security

BIT TYPE: Tri-Cone Bit

TYPE: EBXS20DSD

NOZZLES: 0.746 TFA

IADC BIT GRADE: ? / ? / ? / ? / ? / ? / ? / ?

— PUMP PARAMETERS —

PRESSURE ON BTM: 1050

PRESSURE OFF BTM: 950

TOTAL FLOW RATE: 324.80

PUMP 1: TYPE:

EFF.: 100.0%

SPM: 58.00

LINER: 5.50

STROKE VOL.: 5.6000

PUMP 2: TYPE:

EFF.: 100.0%

SPM: 0.00

LINER: 0.00

STROKE VOL.: 0.0000

PUMP 3: TYPE:

EFF.: 100.0%

SPM: 0.00

LINER: 0.00

STROKE VOL.: 0.0000

— MUD RECORD —

MUD TYPE: Polymer

VISC: 40

WTR LOSS: 1

PV: 12

YP: 17

pH: 9

DENSITY: 9.3

GEL 0/10: 8.00

SAND: 0

SOLIDS: 0

OIL: 0

TEMP: 0

LIQUID BASE: Water

LIQUID RATE: 0

GAS TYPE:

GAS RATE: 0

— COMMENTS: —

MWD could not get a good shallow test due to pump noise. the BHA was tripped in to casing shoe depth and shallow tested again. The pulse was good but could not be fully decoded. help was asked of from Scott Robert in USA. problem was solved after 3 hours. Ran in hole and surveyed hole approx every 2 stands to bottom. on bottom could not get a toolface reading due to excessive noise from the 2 pumps. we required about 450 gpm to get a decent signal and penetration rate but could not attain required flow rate with 2 pumps as they would stall out. we drilled with very reduced flow rate of 320gpm, but signal was good at this rate although penetration rate was low. we had good toolfaces with one pump.





Weatherford®

Daily Activity Report

Day 5 - 2009/12/13

Drilling Services

V4.2.26/5

FILE #: 1010101

JOB TYPE:

RIG & NO: Hunt Energy 3

WELL NAME: Westwood # 1

COMPANY: Overseas Energy Holdings

SURFACE LOCATION: Haspden

SERVICE CO.: Precision Energy Services

SURVEY TYPE:

FIELD / LOCATION: Westwood / Tasmania / Australia

DIR Supervisor: Bob Fleming

MWD Supervisor: Olive Pickering, Faheem Khan

GROUND ELEV: 0

KB ELEV: 0

START DEPTH: 0.0

END DEPTH: 1073.0

PROGRESS: 1073.0

AVG. ROP: 62.2

DAILY COST: CAN\$0.00

PREVIOUS COST: CAN\$0.00

TOTAL COST: CAN\$0.00

WORK STATUS:

(All units are metric.)

TIME	DAILY ACTIVITY	HRS	DPH	BHA	TIME	DAILY ACTIVITY	HRS	DPH	BHA
00:00-01:00	Orienting With Motor	1.00	1015	2	13:15-14:15	Orienting With Motor	1.00	1064	2
01:00-06:00	Rotating With Motor	5.00	1030	2	14:15-17:15	Rotating With Motor	3.00	1073	2
06:00-08:00	Orienting With Motor	2.00	1038	2	17:15-18:30	Work On MWD	1.25	1073	2
08:00-13:15	Rotating With Motor	5.25	1059	2	18:30-24:00	POOH For EM MWD	5.50	1073	2

TIME SUMMARY (hrs):

MOTOR DRILL: 17.25

TIME DRILL: 0.00

MOTOR REAM: 0.00

CIRC: 0.00

MOTOR HRS: 17.25

ORIENTING HRS: 4.00

ROTATING HRS: 13.25

ROTARY DRILL: 0.00

TRIP: 5.50

OTHER: 1.25

DRILL HRS: 17.25

ROTARY DRILL: 0.00

MOTOR HRS: 17.25

TRIP: 5.50

OTHER: 1.25

TOTAL HRS: 24.00

DRILLING PARAMETERS:

ROTARY TORQUE: 70

WOB SLIDING (HI): 30000

WOB SLIDING (LO): 15000

RPM (ROTARY): 60

RPM (MOTOR): 90

STRING WEIGHT: 98000

WOB ROTATE (HI): 25000

WOB ROTATE (LO): 15000

DRAG UP: 8000

DRAG DN: 4000

— BHA / MOTOR / BIT INFORMATION: —

BHA: 2

MANFCT.: PES

SETTING: 1.5

MANFCT: Security

IADC BIT GRADE: 1 / 1 / NO / A / E / 1 / NO / DTF

HOLE SIZE: 8.5

STABILIZER: No

KICKPAD: No

BIT TYPE: Tri-Cone Bit

SECTION TYPE: Drop & Hold

SERIAL#: 675-3196

SIZE: 6 3/4" (171mm)

TYPE: EBXS20DSD

SURVEY TYPE: Positive Pulse MWD

MODEL: LOBE CFG.8/7

MTR HRS THIS DAY: 17.25

MTR HRS TO DATE: 20.25

NOZZLES: 0.748 TFA

— PUMP PARAMETERS —

PRESSURE ON BTM: 1200

PUMP 1: TYPE:

PUMP 2: TYPE:

PUMP 3: TYPE:

PRESSURE OFF BTM: 950

EFF.: 100.0% SPM: 58.00

EFF.: 100.0% SPM: 0.00

EFF.: 100.0% SPM: 0.00

TOTAL FLOW RATE: 324.90

LINER: 5.50 STROKE VOL.: 5.6000

LINER: 0.00 STROKE VOL.: 0.0000

LINER: 0.00 STROKE VOL.: 0.0000

— MUD RECORD —

MUD TYPE: Polymer

DENSITY: 9.2

LIQUID BASE: Water

VISC: 40

GEL 0/10: 8.00

WTR LOSS: 1

SAND: 0

LIQUID RATE: 0

PV: 12

SOLIDS: 0

GAS TYPE:

YP: 17

OIL: 0

pH: 9

TEMP: 0

GAS RATE: 0

— COMMENTS: —

Still drilling with low flow rate, sliding ok and toolfaces come up enough for us to calculate where the toolface actually is while sliding with different weights so we don't lose control of the well and keep down time to a minimum. MWD failed at 2pm no toolfaces or surveys were detected. contacted Scott Robert in the USA and after reading the files we sent over advised we should try a few procedures and if they failed to POOH and replace tools. POOH for tool replacement.





Weatherford

Daily Activity Report

Day 6 - 2009/12/14

Drilling Services
V4.2.26/5

FILE #: 1010101
JOB TYPE:
RIG & NO: Hunt Energy 3

WELL NAME: Westwood # 1
COMPANY: Overseas Energy Holdings
SURFACE LOCATION: Haspden

SERVICE CO.: Precision Energy Services
SURVEY TYPE:
FIELD / LOCATION: Westwood / Tasmania / Australia

DIR Supervisor: Bob Fleming
MWD Supervisor: Olive Pickering, Faheem Khan

GROUND ELEV: 0 START DEPTH: 1073.0 PROGRESS: 0.0 DAILY COST: CAN\$0.00
KB ELEV: 0 END DEPTH: 1073.0 AVG. ROP.: 0.0 PREVIOUS COST: CAN\$0.00
TOTAL COST: CAN\$0.00

WORK STATUS: (All units are metric.)

TIME	DAILY ACTIVITY	HRS	DPH	BHA	TIME	DAILY ACTIVITY	HRS	DPH	BHA
00:00-02:00	POOH To Check Tools	2.00	1073	2	14:30-15:30	Shallow Test Tools	1.00	1073	3
02:00-07:00	Work On MWD	5.00	1073	2	15:30-18:00	RIH With Directional	2.50	1073	3
07:00-10:30	RIH With Directional	3.50	1073	3	18:00-18:30	Shallow Test Tools	0.50	1073	3
10:30-11:30	Shallow Test Tools	1.00	1073	3	18:30-20:30	RIH With Directional	2.00	1073	3
11:30-13:00	POOH For MWD - no pulse detected	1.50	1073	3	20:30-22:30	Orienting With Motor	2.00	1073	3
13:00-14:30	Work On MWD	1.50	1073	3	22:30-24:00	Rotating With Motor	1.50	1073	3

TIME SUMMARY (hrs):				DRILLING PARAMETERS:			
MOTOR DRILL: 3.50	ORIENTING HRS: 2.00	ROTARY DRILL: 0.00	ROTARY TORQUE: 75	STRING WEIGHT 98000			
TIME DRILL: 0.00	ROTATING HRS: 1.50	MOTOR HRS: 3.50	WOB SLIDING (HI): 30000	WOB ROTATE (HI): 25000			
MOTOR REAM: 0.00		TRIP: 11.50	WOB SLIDING (LO): 25000	WOB ROTATE (LO): 20000			
CIRC: 0.00	ROTARY DRILL: 0.00	OTHER: 9.00	RPM (ROTARY): 60	DRAG UP: 10000			
MOTOR HRS: 3.50	DRILL HRS: 3.50	TOTAL HRS: 24.00	RPM (MOTOR): 111	DRAG DN: 5000			

BHA / MOTOR / BIT INFORMATION:

BHA: 2 HOLE SIZE: 8.5 SECTION TYPE: Drop & Hold SURVEY TYPE: Positive Pulse MWD
MANFCT.: PES STABILIZER: No SERIAL#: 675-3196 MODEL: LOBE CFG.#7
SETTING: 1.5 KICKPAD: No SIZE: 6 3/4" (171mm) MTR HRS THIS DAY: 0 MTR HRS TO DATE: 20.25
MANFCT: Security BIT TYPE: Tri-Cone Bit TYPE: EBXS200SD NOZZLES: 0.748 TFA
IADC BIT GRADE: 1 / 1 / NO / A / E / 1 / NO / DTF

BHA: 3 HOLE SIZE: 8.5 SECTION TYPE: Drop and Hold SURVEY TYPE: Positive Pulse MWD
MANFCT.: PES STABILIZER: No SERIAL#: 675-3196 MODEL: LOBE CFG.#7
SETTING: 1.5 KICKPAD: No SIZE: 6 3/4" (171mm) MTR HRS THIS DAY: 3.5 MTR HRS TO DATE: 23.75
MANFCT: Security BIT TYPE: Tri-Cone Bit TYPE: EBXS200SD NOZZLES: 18, 18, 18, n/a: 0 TFA
IADC BIT GRADE: ? / ? / ? / ? / ? / ? / ? / ?

PUMP PARAMETERS

PRESSURE ON BTM: 1350 PRESSURE OFF BTM: 1200 TOTAL FLOW RATE: 393.82
PUMP 1: TYPE: EFF.: 100.0% SPM: 0.00 LINER: 0.00 STROKE VOL.: 0.0000
PUMP 2: TYPE: EFF.: 100.0% SPM: 58.00 LINER: 6.00 STROKE VOL.: 6.7900
PUMP 3: TYPE: EFF.: 100.0% SPM: 0.00 LINER: 0.00 STROKE VOL.: 0.0000

MUD RECORD

MUD TYPE: Polymer VISC: 40 WTR LOSS: 1 PV: 12 YP: 17 pH: 9
DENSITY: 8.2 GEL Q10: 8.00 SAND: 0 SOLIDS: 0 OIL: 0 TEMP: 70
LIQUID BASE: Water LIQUID RATE: 0 GAS TYPE: GAS RATE: 0

COMMENTS:

POOH with MWD. Changed out tool and RIH for shallow hole test, unable to detect any pulse on #1 pump. #2 pump still being worked on. Pulsator in bad shape, pulled out to check MWD again, changed pulse unit and tested again on surface, it worked ok. Ran in hole for another shallow hole test and tried with #1 pump again, had pulse but pump too noisy, used pump #2 and it worked ok. after the pulsator was repaired on #2 all worked ok. RIH and performed another shallow test at casing shoe. all ok. RIH and continue drilling





Weatherford®

Daily Activity Report

Day 7 - 2009/12/15

Drilling Services

V4.2.26/5

FILE #: 1010101

JOB TYPE:

RIG & NO: Hunt Energy 3

WELL NAME: Westwood # 1

COMPANY: Overseas Energy Holdings

SURFACE LOCATION: Haspden

SERVICE CO.: Precision Energy Services

SURVEY TYPE:

FIELD / LOCATION: Westwood / Tasmania / Australia

DIR Supervisor: Bob Fleming

MWD Supervisor: Olive Pickering, Faheem Khan

GROUND ELEV: 0

KB ELEV: 0

START DEPTH: 1073.0

END DEPTH: 1207.0

PROGRESS: 134.0

AVG. ROP.: 5.7

DAILY COST: CAN\$0.00

PREVIOUS COST: CAN\$0.00

TOTAL COST: CAN\$0.00

WORK STATUS:

(All units are metric.)

TIME	DAILY ACTIVITY	HRS	DPTH	BHA	TIME	DAILY ACTIVITY	HRS	DPTH	BHA
00:00-02:00	Rotating With Motor	2.00	1095	3	15:00-15:30	Rig Service	0.50	1160	3
02:00-03:30	Orienting With Motor	1.50	1110	3	15:30-16:45	Orienting With Motor	1.25	1170	3
03:30-04:30	Rotating With Motor	1.00	1114	3	16:45-19:15	Rotating With Motor	2.50	1180	3
04:30-06:15	Rotating With Motor	1.75	1123	3	19:15-20:30	Rotating With Motor	1.25	1188	3
06:15-08:00	Rotating With Motor	1.75	1132	3	20:30-22:00	Orienting With Motor	1.50	1197	3
08:00-09:45	Orienting With Motor	1.75	1140	3	22:00-22:30	Rotating With Motor	0.50	1198.6	3
09:45-10:15	Rotating With Motor	0.50	1142	3	22:30-24:00	Rotating With Motor	1.50	1207	3
10:15-15:00	Rotating With Motor	4.75	1160	3			0.00		

TIME SUMMARY (hrs):

MOTOR DRILL: 23.50

TIME DRILL: 0.00

MOTOR REAM: 0.00

CIRC: 0.00

MOTOR HRS: 23.50

ORIENTING HRS: 6.00

ROTATING HRS: 17.50

ROTARY DRILL: 0.00

ROTARY HRS: 0.00

DRILL HRS: 23.50

ROTARY DRILL: 0.00

MOTOR HRS: 23.50

TRIP: 0.00

OTHER: 0.50

TOTAL HRS: 24.00

DRILLING PARAMETERS:

ROTARY TORQUE: 70

WOB SLIDING (HI): 35000

WOB SLIDING (LO): 25000

RPM (ROTARY): 60

RPM (MOTOR): 111

STRING WEIGHT: 98

WOB ROTATE (HI): 25000

WOB ROTATE (LO): 25000

DRAG UP: 10000

DRAG DN: 5000

— BHA / MOTOR / BIT INFORMATION: —

BHA: 3

MANFCT.: PES

SETTING: 1.5

MANFCT: Security

IADC BIT GRADE: ? / ? / ? / ? / ? / ? / ?

HOLE SIZE: 8.5

STABILIZER: No

KICKPAD: No

BIT TYPE: Tri-Cone Bit

SECTION TYPE: Drop and Hold

SERIAL#: 675-3196

SIZE: 6 3/4" (171mm)

TYPE: EBXS200SD

SURVEY TYPE: Positive Pulse MWD

MODEL: LOBE CFG.6/7

MTR HRS THIS DAY: 23.5 MTR HRS TO DATE: 47.25

NOZZLES: 18, 18, 18, n/a: 0 TFA

— PUMP PARAMETERS —

PRESSURE ON BTM: 1350

PUMP 1: TYPE:

PUMP 2: TYPE:

PUMP 3: TYPE:

PRESSURE OFF BTM: 1200

EFF.: 100.0%

EFF.: 100.0%

EFF.: 100.0%

SPM: 0.00

SPM: 58.00

SPM: 0.00

LINER: 0.00

LINER: 6.00

LINER: 0.00

TOTAL FLOW RATE: 393.24

STROKE VOL.: 0.0000

STROKE VOL.: 6.7900

STROKE VOL.: 0.0000

— MUD RECORD —

MUD TYPE: Polymer

DENSITY: 9.25

LIQUID BASE: Water

VISC: 38

GEL 0/10: 4.00

WTR LOSS: 7.8

SAND: 0.25

LIQUID RATE: 0

PV: 10

SOLIDS: 5.9

GAS TYPE:

YP: 10

OIL: 0

pH: 8.5

TEMP: 0

GAS RATE: 0

— COMMENTS: —

All equipment operating well, sliding ok, toolfaces fairly regular and surveys good. We are orienting at low side at all times but formation reluctant to drop angle, suspect we are drilling an incline. the well is turning left ok, but we reached 7.5 degs inc and is reluctant to drop further. Am sliding an average of 8.5m per 30m.





Weatherford

Daily Activity Report

Day 8 - 2009/12/16

Drilling Services

V4.2.25/5

FILE #: 1010101
JOB TYPE:
RIG & NO: Hunt Energy 3

WELL NAME: Westwood # 1
COMPANY: Overseas Energy Holdings
SURFACE LOCATION: Haspden

SERVICE CO.: Precision Energy Services
SURVEY TYPE:
FIELD / LOCATION: Westwood / Tasmania / Australia

DIR Supervisor: Bob Fleming
MWD Supervisor: Olive Pickering, Faheem Khan

GROUND ELEV: 0 START DEPTH: 1207.0 PROGRESS: 66.0 DAILY COST: CAN\$0.00
KB ELEV: 0 END DEPTH: 1273.0 AVG. ROP.: 7.0 PREVIOUS COST: CAN\$0.00
TOTAL COST: CAN\$0.00

WORK STATUS: (All units are metric.)

TIME	DAILY ACTIVITY	HRS	DPH	BHA	TIME	DAILY ACTIVITY	HRS	DPH	BHA
00:00-01:30	Rotating With Motor	1.50	1217	3	12:30-17:45	RIH With Directional	5.25	1246	4
01:30-03:00	Orienting With Motor	1.50	1225	3	17:45-18:45	Ream Hole	1.00	1246	4
03:00-04:30	Rotating With Motor	1.50	1236	3	18:45-19:45	Orienting With Motor	1.00	1254	4
04:30-06:00	Rotating With Motor	1.50	1245	3	19:45-20:45	Rotating With Motor	1.00	1254	4
06:00-06:30	Orienting With Motor	0.50	1246	3	20:45-21:45	Rotating With Motor	1.00	1273	4
06:30-07:00	Circulating	0.50	1246	3	21:45-24:00	Back Reaming	2.25	1273	4
07:00-12:30	Change Bit	5.50	1246	4			0.00		

TIME SUMMARY (hrs):			DRILLING PARAMETERS:		
MOTOR DRILL: 9.50	ORIENTING HRS: 1.00	ROTARY DRILL: 0.00	ROTARY TORQUE: 80	STRING WEIGHT	100000
TIME DRILL: 0.00	ROTATING HRS: 2.00	MOTOR HRS: 13.25	WOB SLIDING (HI): 35000	WOB ROTATE (HI):	25000
MOTOR REAM: 1.00	TRIP: 5.25	WOB SLIDING (LO): 30000	WOB ROTATE (LO):	20000	
CIRC: 2.75	ROTARY DRILL: 0.00	OTHER: 5.50	RPM (ROTARY): 60	DRAG UP:	30000
MOTOR HRS: 13.25	DRILL HRS: 9.50	TOTAL HRS: 24.00	RPM (MOTOR): 111	DRAG DN:	5000

BHA / MOTOR / BIT INFORMATION:

BHA: 3 HOLE SIZE: 8.5 SECTION TYPE: Drop and Hold SURVEY TYPE: Positive Pulse MWD
MANFCT.: PES STABILIZER: 8 3/8" (213mm) SERIAL#: 675-3196 MODEL: LOBE CFG.#7
SETTING: 1.5 KICKPAD: No SIZE: 6 3/4" (171mm) MTR HRS THIS DAY: 7 MTR HRS TO DATE: 54.25
MANFCT: Security BIT TYPE: Tri-Cone Bit TYPE: EBXS20DSD NOZZLES: 0.746 TFA
IADC BIT GRADE: ? / ? / ? / ? / ? / ? / ?

BHA: 4 HOLE SIZE: 8.5 SECTION TYPE: DROP AND HOLD SURVEY TYPE: Positive Pulse MWD
MANFCT.: PES STABILIZER: 8 3/8" (213mm) SERIAL#: 675-3196 MODEL: LOBE CFG.#7
SETTING: 1.5 KICKPAD: No SIZE: 6 3/4" (171mm) MTR HRS THIS DAY: 6.25 MTR HRS TO DATE: 60.5
MANFCT: Reed BIT TYPE: Tri-Cone Bit TYPE: R30APDH NOZZLES: 0.746 TFA
IADC BIT GRADE: ? / ? / ? / ? / ? / ? / ?

PUMP PARAMETERS

PRESSURE ON BTM: 1400 PRESSURE OFF BTM: 1250 TOTAL FLOW RATE: 393.24
PUMP 1: TYPE: EFF.: 100.0% SPM: 0.00 LINER: 6.00 STROKE VOL.: 6.7900
PUMP 2: TYPE: EFF.: 100.0% SPM: 58.00 LINER: 6.00 STROKE VOL.: 6.7900
PUMP 3: TYPE: EFF.: 100.0% SPM: 0.00 LINER: 0.00 STROKE VOL.: 0.0000

MUD RECORD

MUD TYPE: Polymer VISC: 38 WTR LOSS: 7.8 PV: 10 YP: 10 pH: 8.5
DENSITY: 9.2 GEL 0/10: 4.00 SAND: 0.25 SOLIDS: 5.9 OIL: 0 TEMP: 0
LIQUID BASE: Water LIQUID RATE: 0 GAS TYPE: GAS RATE: 0

COMMENTS:

Could not hold a toolface at 1245m pressure fluctuating and higher overpull. decision made to pooh and check bit and motor. Changed bit. Motor ok Bearing .97. RIH continue drilling. steering ok. formation continuing to try and build.





Weatherford®

Daily Activity Report

Day 9 - 2009/12/17

Drilling Services

V4.2.26/5

FILE #: 1010101
JOB TYPE:
RIG & NO: Hunt Energy 3

WELL NAME: Westwood # 1
COMPANY: Overseas Energy Holdings
SURFACE LOCATION: Haspden

SERVICE CO.: Precision Energy Services
SURVEY TYPE:
FIELD / LOCATION: Westwood / Tasmania / Australia

DIR Supervisor: Bob Fleming
MWD Supervisor: Olive Pickering, Faheem Khan

GROUND ELEV: 0 START DEPTH: 1273.0 PROGRESS: 53.0 DAILY COST: CAN\$0.00
KB ELEV: 0 END DEPTH: 1326.0 AVG. ROP.: 4.8 PREVIOUS COST: CAN\$0.00
TOTAL COST: CAN\$0.00

WORK STATUS: (All units are metric.)

TIME	DAILY ACTIVITY	HRS	DPTH	BHA	TIME	DAILY ACTIVITY	HRS	DPTH	BHA
00:00-02:00	Orienting With Motor	2.00	1281	4	08:00-11:00	Rotating With Motor	3.00	1326	4
02:00-06:30	Rotating With Motor	4.50	1302	4	11:00-19:00	POOH - See Comments - to set cmt plug	8.00	1326	4
06:30-08:00	Orienting With Motor	1.50	1313	4	19:00-24:00	RIH Open Ended	5.00	1326	n/a

TIME SUMMARY (hrs):			DRILLING PARAMETERS:		
MOTOR DRILL: 11.00	ORIENTING HRS: 3.50	ROTARY DRILL: 0.00	ROTARY TORQUE: 80	STRING WEIGHT 100000	
TIME DRILL: 0.00	ROTATING HRS: 7.50	MOTOR HRS: 11.00	WOB SLIDING (HI): 35000	WOB ROTATE (HI): 25000	
MOTOR REAM: 0.00		TRIP: 13.00	WOB SLIDING (LO): 25000	WOB ROTATE (LO): 20000	
CIRC: 0.00	ROTARY DRILL: 0.00	OTHER: 0.00	RPM (ROTARY): 60	DRAG UP: 40000	
MOTOR HRS: 11.00	DRILL HRS: 11.00	TOTAL HRS: 24.00	RPM (MOTOR): 111	DRAG DN: 5000	

— BHA / MOTOR / BIT INFORMATION: —

BHA: 4 HOLE SIZE: 8.5 SECTION TYPE: Drop & Hold SURVEY TYPE: Positive Pulse MWD
MANFCT.: PES STABILIZER: 8 3/8" (213mm) SERIAL#: 675-3196 MODEL: LOBE CFG.8/7
SETTING: 1.5 KICKPAD: No SIZE: 6 3/4" (171mm) MTR HRS THIS DAY: 11 MTR HRS TO DATE: 71.5
MANFCT: Reed BIT TYPE: Tri-Cone Bit TYPE: R30APDH NOZZLES: 0.748 TFA
IADC BIT GRADE: ? / ? / ? / ? / ? / ? / ? / ?

— PUMP PARAMETERS —

PRESSURE ON BTM: 1450 PRESSURE OFF BTM: 1250 TOTAL FLOW RATE: 393.24
PUMP 1: TYPE: EFF.: 100.0% SPM: 0.00 LINER: 6.00 STROKE VOL.: 6.7900
PUMP 2: TYPE: EFF.: 100.0% SPM: 58.00 LINER: 6.00 STROKE VOL.: 6.7900
PUMP 3: TYPE: EFF.: 100.0% SPM: 0.00 LINER: 0.00 STROKE VOL.: 0.0000

— MUD RECORD —

MUD TYPE: Polymer VISC: 38 WTR LOSS: 7.8 PV: 10 YP: 10 pH: 8.5
DENSITY: 9.2 GEL 0/10: 4.00 SAND: 0.25 SOLIDS: 5.9 OIL: 0 TEMP: 0
LIQUID BASE: Water LIQUID RATE: 0 GAS TYPE: GAS RATE: 0

— COMMENTS: —

Having difficulty steering the well down, we are orienting 180 degs lowside but angle still increasing and now direction has locked in at approx 267 az. we discussed problem with client, and gave them a proposal for a sidetrack at 814m direct to the target. this was accepted and we are POOH to set a cement plug.





Weatherford

Daily Activity Report

Day 10 - 2009/12/18

Drilling Services

V4.2.26/5

FILE #: 1010101

JOB TYPE:

RIG & NO: Hunt Energy 3

WELL NAME: Westwood # 1

COMPANY: Overseas Energy Holdings

SURFACE LOCATION: Haspden

SERVICE CO.: Precision Energy Services

SURVEY TYPE:

FIELD / LOCATION: Westwood / Tasmania / Australia

DIR Supervisor: Bob Fleming, Dan Power

MWD Supervisor: Clive Pickering, Faheem Khan

GROUND ELEV: 0

KB ELEV: 0

START DEPTH: 1326.0

END DEPTH: 839.0

PROGRESS: 0.0

AVG. ROP: 0.0

DAILY COST: CAN\$0.00

PREVIOUS COST: CAN\$0.00

TOTAL COST: CAN\$0.00

WORK STATUS:

(All units are metric.)

TIME	DAILY ACTIVITY	HRS	DPH	BHA	TIME	DAILY ACTIVITY	HRS	DPH	BHA
00:00-07:00	Wait On Cement	7.00	804	n/a	13:30-16:30	Lay Down Drill Pipe	2.50	804	5
07:00-09:00	POOH - See Comments - To pick up Assy 5	2.00	804	5	16:00-17:30	RIH	1.50	804	5
09:00-10:00	Handle Directional Tools	1.00	804	5	17:30-20:30	Control Drill	2.50	839	5
10:00-13:30	RIH With Directional	3.50	804	5	20:00-24:00	Time Drill	4.00	839	5

TIME SUMMARY (hrs):

MOTOR DRILL: 0.00

TIME DRILL: 6.50

MOTOR REAM: 0.00

CIRC: 0.00

MOTOR HRS: 6.50

ORIENTING HRS: 0.00

ROTATING HRS: 0.00

ROTARY DRILL: 0.00

ROTARY DRILL: 0.00

DRILL HRS: 0.00

ROTARY DRILL: 0.00

MOTOR HRS: 6.50

TRIP: 9.50

OTHER: 8.00

TOTAL HRS: 24.00

DRILLING PARAMETERS:

ROTARY TORQUE: STRING WEIGHT 0

WOB SLIDING (HI): 0 WOB ROTATE (HI): 0

WOB SLIDING (LO): 0 WOB ROTATE (LO): 0

RPM (ROTARY): DRAG UP: 0

RPM (MOTOR): DRAG DN: 0

— BHA / MOTOR / BIT INFORMATION: —

BHA: 5

HOLE SIZE: 8.5

SECTION TYPE: Build And drop

SURVEY TYPE: Positive Pulse MWD

MANFCT.: PES

STABILIZER: No

SERIAL#: 675-3186

MODEL:

LOBE CFG. 6/7

SETTING: 1.5

KICKPAD: No

SIZE: 6 3/4" (171mm)

MTR HRS THIS DAY: 6.5

MTR HRS TO DATE: 78

MANFCT: Smith

BIT TYPE: Tri-Cone Bit

TYPE: FH30

NOZZLES: 0.92 TFA

IADC BIT GRADE: ? / ? / ? / ? / ? / ? / ? / ?

— PUMP PARAMETERS —

PRESSURE ON BTM: 0

PRESSURE OFF BTM: 0

TOTAL FLOW RATE: 257.84

PUMP 1: TYPE:

EFF.: 100.0%

SPM: 38.00

LINER: 6.00

STROKE VOL.: 6.7900

PUMP 2: TYPE:

EFF.: 100.0%

SPM: 0.00

LINER: 6.00

STROKE VOL.: 6.7900

PUMP 3: TYPE:

EFF.: 100.0%

SPM: 0.00

LINER: 0.00

STROKE VOL.: 0.0000

— MUD RECORD —

MUD TYPE: Polymer

VISC: 38

WTR LOSS: 7.8

PV: 10

YP: 10

pH: 8.5

DENSITY: 9.2

GEL 0/10: 4.00

SAND: 0.25

SOLIDS: 5.9

OIL: 0

TEMP: 0

LIQUID BASE: Water

LIQUID RATE: 0

GAS TYPE:

GAS RATE: 0

— COMMENTS: —

Dan power arrived on site PM. attempt to sidetrack off cement plug. cement supposed to be at 804m could not carry weight until 821m, tried to carry weight from 821 to 849m but was drilling very quickly. started time drilling from 849m. we are not sure how much cement remains in hole, so do not want to risk running out of plug.





Weatherford

Daily Activity Report

Day 11 - 2009/12/19

Drilling Services

V4.2.26/5

FILE #: 1010101

JOB TYPE:

RIG & NO: Hunt Energy 3

WELL NAME: Westwood # 1

COMPANY: Overseas Energy Holdings

SURFACE LOCATION: Haspden

SERVICE CO.: Precision Energy Services

SURVEY TYPE:

FIELD / LOCATION: Westwood / Tasmania / Australia

DIR Supervisor: Bob Fleming, Dan Power

MWD Supervisor: Olive Pickering, Faheem Khan

GROUND ELEV: 0

KB ELEV: 0

START DEPTH: 939.0

END DEPTH: 964.0

PROGRESS: 125.0

AVG. ROP.: 7.3

DAILY COST: CAN\$0.00

PREVIOUS COST: CAN\$0.00

TOTAL COST: CAN\$0.00

WORK STATUS:

(All units are metric.)

TIME	DAILY ACTIVITY	HRS	DPH	BHA	TIME	DAILY ACTIVITY	HRS	DPH	BHA
00:00-06:45	Time Drill	6.75	877	5	20:00-21:30	Rotating With Motor	1.50	953	5
06:45-12:15	Rotating With Motor	5.50	908	5	21:30-23:30	Orienting With Motor	2.00	962	5
12:15-18:15	Orienting With Motor	6.00	934	5	23:30-24:00	Rotating With Motor	0.50	964	5
18:15-20:00	Rotating With Motor	1.75	943	5			0.00		

TIME SUMMARY (hrs):

MOTOR DRILL: 0.00

TIME DRILL: 0.00

MOTOR REAM: 0.00

CIRC: 0.00

MOTOR HRS: 0.00

ORIENTING HRS: 0.00

ROTATING HRS: 0.00

ROTARY DRILL: 17.25

ROTARY DRILL: 17.25

DRILL HRS: 17.25

ROTARY DRILL: 17.25

MOTOR HRS: 0.00

TRIP: 0.00

OTHER: 6.75

TOTAL HRS: 24.00

DRILLING PARAMETERS:

ROTARY TORQUE: 70

WOB SLIDING (HI): 20000

WOB SLIDING (LO): 15000

RPM (ROTARY): 60

RPM (MOTOR): 110

STRING WEIGHT: 78000

WOB ROTATE (HI): 20000

WOB ROTATE (LO): 15000

DRAG UP: 5000

DRAG DN: 2000

— BHA / MOTOR / BIT INFORMATION:

BHA: 5

MANFCT.: n/a

SETTING: n/a

MANFCT: Smith

HOLE SIZE: 8.5

STABILIZER: n/a

KICKPAD: n/a

BIT TYPE: Tri-Cone Bit

SECTION TYPE: Build And drop

SERIAL#: n/a

SIZE: n/a

TYPE: FH30

SURVEY TYPE: Positive Pulse MWD

MODEL: n/a

MTR HRS THIS DAY: 0

NOZZLES: 0.92 TFA

LOBE CFG: n/a

MTR HRS TO DATE: 0

IADC BIT GRADE: ? / ? / ? / ? / ? / ? / ?

— PUMP PARAMETERS

PRESSURE ON BTM: 1250

PUMP 1: TYPE:

PUMP 2: TYPE:

PUMP 3: TYPE:

PRESSURE OFF BTM: 550

EFF.: 100.0% SPM: 0.00

EFF.: 100.0% SPM: 57.00

EFF.: 100.0% SPM: 0.00

TOTAL FLOW RATE: 396.46

LINER: 6.00 STROKE VOL.: 6.7900

LINER: 6.00 STROKE VOL.: 6.7900

LINER: 0.00 STROKE VOL.: 0.0000

— MUD RECORD

MUD TYPE: Polymer

DENSITY: 9.2

LIQUID BASE: Water

VISC: 38

GEL 0/10: 4.00

WTR LOSS: 7.8

SAND: 0.25

LIQUID RATE: 0

PV: 10

SOLIDS: 5.9

GAS TYPE:

YP: 10

OIL: 0

pH: 8.5

TEMP: 0

GAS RATE: 0

— COMMENTS:

Continued Time drilling to 877m. sample cement still showing fairly soft, survey taken at 851.9 showed a definite change in azimuth to 15 az from 26 az in original hole and a one degree drop in inc. samples did not clean up until 860m. rotated one single to confirm sidetrack. drilled ahead. formation still building in rotary. slid down to arrest same. have good control so far.





Weatherford®

Daily Activity Report

Day 12 - 2009/12/20

Drilling Services

V4.2.26/5

FILE #: 1010101
JOB TYPE:
RIG & NO: Hunt Energy 3

WELL NAME: Westwood # 1
COMPANY: Overseas Energy Holdings
SURFACE LOCATION: Haspden

SERVICE CO.: Precision Energy Services
SURVEY TYPE:
FIELD / LOCATION: Westwood / Tasmania / Australia

DIR Supervisor: Bob Fleming, Dan Power
MWD Supervisor: Olive Pickering, Faheem Khan

GROUND ELEV: 0 START DEPTH: 964.0 PROGRESS: 129.0 DAILY COST: CAN\$0.00
KB ELEV: 0 END DEPTH: 1093.0 AVG. ROP.: 5.7 PREVIOUS COST: CAN\$0.00
TOTAL COST: CAN\$0.00

WORK STATUS: (All units are metric.)

TIME	DAILY ACTIVITY	HRS	DPH	BHA	TIME	DAILY ACTIVITY	HRS	DPH	BHA
00:00-00:30	Rotating With Motor	0.50	972	5	06:30-07:45	Rotating With Motor	1.25	1019	5
00:30-02:00	Rotating With Motor	1.50	981	5	07:45-16:00	Orienting With Motor	8.25	1055	5
02:00-02:15	Circulating - See Comments - survey	0.25	981	5	16:00-17:45	Rotating With Motor	1.75	1065	5
02:15-03:30	Rotating With Motor	1.25	991	5	17:45-19:45	Rotating With Motor	2.00	1075	5
03:30-04:45	Circ & Accumulate Surveys	1.25	991	5	19:45-20:30	Rotating With Motor	0.75	1078	5
04:45-05:15	Orienting With Motor	0.50	1000	5	20:30-22:15	Orienting With Motor	1.75	1084	5
05:15-06:30	Rotating With Motor	1.25	1009	5	22:15-24:00	Rotating With Motor	1.75	1093	5

TIME SUMMARY (hrs):				DRILLING PARAMETERS:			
MOTOR DRILL: 0.00	ORIENTING HRS: 0.00	ROTARY DRILL: 22.50	ROTARY TORQUE: 25	STRING WEIGHT 78000			
TIME DRILL: 0.00	ROTATING HRS: 0.00	MOTOR HRS: 0.00	WOB SLIDING (HI): 20000	WOB ROTATE (HI): 20000			
MOTOR REAM: 0.00		TRIP: 0.00	WOB SLIDING (LO): 15000	WOB ROTATE (LO): 15000			
CIRC: 0.00	ROTARY DRILL: 22.50	OTHER: 1.50	RPM (ROTARY): 60	DRAG UP: 7000			
MOTOR HRS: 0.00	DRILL HRS: 22.50	TOTAL HRS: 24.00	RPM (MOTOR): 109	DRAG DN: 2000			

— BHA / MOTOR / BIT INFORMATION: —

BHA: 5 HOLE SIZE: 8.5 SECTION TYPE: Build And drop SURVEY TYPE: Positive Pulse MWD
MANFCT.: n/a STABILIZER: n/a SERIAL#: n/a MODEL: n/a LOBE CFG: n/a
SETTING: n/a KICKPAD: n/a SIZE: n/a MTR HRS THIS DAY: 0 MTR HRS TO DATE: 0
MANFCT: Smith BIT TYPE: Tri-Cone Bit TYPE: FH30 NOZZLES: 0.92 TFA
IADC BIT GRADE: ? / ? / ? / ? / ? / ? / ?

— PUMP PARAMETERS —

PRESSURE ON BTM: 1325 PRESSURE OFF BTM: 1150 TOTAL FLOW RATE: 398.46
PUMP 1: TYPE: EFF.: 100.0% SPM: 0.00 LINER: 6.00 STROKE VOL.: 6.7900
PUMP 2: TYPE: EFF.: 100.0% SPM: 57.00 LINER: 6.00 STROKE VOL.: 6.7900
PUMP 3: TYPE: EFF.: 100.0% SPM: 0.00 LINER: 0.00 STROKE VOL.: 0.0000

— MUD RECORD —

MUD TYPE: Polymer VISC: 38 WTR LOSS: 7.8 PV: 10 YP: 10 pH: 8.5
DENSITY: 9.2 GEL 0/10: 4.00 SAND: 0.25 SOLIDS: 5.9 OIL: 0 TEMP: 0
LIQUID BASE: Water LIQUID RATE: 0 GAS TYPE: GAS RATE: 0

— COMMENTS: —

The object now is to keep the hole as close to the centre of the target until the supposed target depth of 1600m. this requires us to use the low angle in the hole and slowly spiral about its axis. this action keeps us within about 7m from the centre of target. If the client changes the target depth we are in a position to build angle and attain the centre position. this will require a lot of sliding. What we are trying to do has been explained to the company representative Tim Franklin and he approves.





Weatherford®

Daily Activity Report

Day 13 - 2009/12/21

Drilling Services

V4.2.25/5

FILE #: 1010101
JOB TYPE:
RIG & NO: Hunt Energy 3

WELL NAME: Westwood # 1
COMPANY: Overseas Energy Holdings
SURFACE LOCATION: Haspsden

SERVICE CO.: Precision Energy Services
SURVEY TYPE:
FIELD / LOCATION: Westwood / Tasmania / Australia

DIR Supervisor: Bob Fleming, Dan Power
MWD Supervisor: Olive Pickering, Faheem Khan

GROUND ELEV: 0 START DEPTH: 1093.0 PROGRESS: 28.0 DAILY COST: CAN\$0.00
KB ELEV: 0 END DEPTH: 1121.0 AVG. ROP.: 3.7 PREVIOUS COST: CAN\$0.00
TOTAL COST: CAN\$0.00

WORK STATUS: (All units are metric.)

TIME	DAILY ACTIVITY	HRS	DPTH	BHA	TIME	DAILY ACTIVITY	HRS	DPTH	BHA
00:00-02:45	Orienting With Motor	2.75	1102	5	16:00-16:30	Other - See Comments - Test motor & Orient	0.50	1121	6
02:45-04:45	Rotating With Motor	2.00	1112	5	16:30-17:30	Shallow Test Tools	0.50	1121	6
04:45-07:30	Orienting With Motor	2.75	1121	5	17:30-20:30	RIH With New BHA	3.00	1121	6
07:30-08:00	Circ & Condition Hole	0.50	1121	5	20:00-21:30	Pressure Test - BOP's	1.50	1121	6
08:00-11:00	POOH To Change BHA	3.00	1121	5	21:30-22:30	Slip And Out	1.00	1121	6
11:00-13:30	Change Bit And Motor - LO motor BO stab	2.50	1121	5	22:30-24:00	RIH With New BHA	1.50	1121	6
13:30-16:00	RIH With New BHA - PU SS & RR	2.50	1121	6			0.00		

TIME SUMMARY (hrs):				DRILLING PARAMETERS:					
MOTOR DRILL:	7.50	ORIENTING HRS:	0.00	ROTARY DRILL:	0.00	ROTARY TORQUE:	55	STRING WEIGHT	98000
TIME DRILL:	0.00	ROTATING HRS:	0.00	MOTOR HRS:	8.00	WOB SLIDING (HI):	20000	WOB ROTATE (HI):	20000
MOTOR REAM:	0.00			TRIP:	10.00	WOB SLIDING (LO):	20000	WOB ROTATE (LO):	20000
CIRC:	0.50	ROTARY DRILL:	0.00	OTHER:	6.00	RPM (ROTARY):	60	DRAG UP:	105000
MOTOR HRS:	8.00	DRILL HRS:	7.50	TOTAL HRS:	24.00	RPM (MOTOR):	111	DRAG DN:	95000

— BHA / MOTOR / BIT INFORMATION: —

BHA: 5 HOLE SIZE: 8.5 SECTION TYPE: Build And drop SURVEY TYPE: Positive Pulse MWD
MANFCT.: PES STABILIZER: No SERIAL#: 675-3196 MODEL: LOBE CFG.8/7
SETTING: 1.5 KICKPAD: No SIZE: 6 3/4" (171mm) MTR HRS THIS DAY: 8 MTR HRS TO DATE: 134
MANFCT: Smith BIT TYPE: Tri-Cone Bit TYPE: FH30 NOZZLES: 0.92 TFA
IADC BIT GRADE: 2 / 2 / NO / A / E / 1 / NO / DMF

BHA: 6 HOLE SIZE: 8.5 SECTION TYPE: Hold SURVEY TYPE: Positive Pulse MWD
MANFCT.: PES STABILIZER: No SERIAL#: 675-2600 MODEL: LOBE CFG.8/7
SETTING: 1.5 KICKPAD: No SIZE: 6 3/4" (171mm) MTR HRS THIS DAY: 0 MTR HRS TO DATE: 0
MANFCT: Smith BIT TYPE: Tri-Cone Bit TYPE: PJ4480 NOZZLES: 0.748 TFA
IADC BIT GRADE: ? / ? / ? / ? / ? / ? / ? / ?

— PUMP PARAMETERS —

PRESSURE ON BTM: 1350 PRESSURE OFF BTM: 1100 TOTAL FLOW RATE: 398.46
PUMP 1: TYPE: EFF.: 100.0% SPM: 57.00 LINER: 6.00 STROKE VOL.: 6.7900
PUMP 2: TYPE: EFF.: 100.0% SPM: 0.00 LINER: 6.00 STROKE VOL.: 6.7900
PUMP 3: TYPE: EFF.: 100.0% SPM: 0.00 LINER: 0.00 STROKE VOL.: 0.0000

— MUD RECORD —

MUD TYPE: Polymer VISC: 44 WTR LOSS: 6.8 PV: 19 YP: 16 pH: 10.5
DENSITY: 9.3 GEL 0/10: 4.00 SAND: 0.25 SOLIDS: 6.1 OIL: 0 TEMP: 0
LIQUID BASE: Water LIQUID RATE: 0 GAS TYPE: GAS RATE: 0

— COMMENTS: —

Bob Fleming left on annual leave 1330hrs. Continued to drill ahead with low angle attempting to spiral into target. Pressure spikes experienced @ 1110-1120m. Decision made to pull out of hole and pick up new motor. POOH, motor bearing measured 5.2mm laid out motor and picked up new BHA 6. RIH and test motor, MWD. Ran in to casing shoe. BOP test and slip and cut. Pulse test out of casing, continued running in hole.





Weatherford®

Daily Activity Report

Day 14 - 2009/12/22

Drilling Services

V4.2.26/5

FILE #: 1010101
JOB TYPE:
RIG & NO: Hunt Energy 3

WELL NAME: Westwood # 1
COMPANY: Overseas Energy Holdings
SURFACE LOCATION: Haspsden

SERVICE CO.: Precision Energy Services
SURVEY TYPE:
FIELD / LOCATION: Westwood / Tasmania / Australia

DIR Supervisor: Dan Power
MWD Supervisor: Clive Pickering, Faheem Khan

GROUND ELEV: 0 START DEPTH: 1121.0 PROGRESS: 70.0 DAILY COST: CAN\$0.00
KB ELEV: 0 END DEPTH: 1191.0 AVG. ROP: 3.3 PREVIOUS COST: CAN\$0.00
TOTAL COST: CAN\$0.00

WORK STATUS: (All units are metric.)

TIME	DAILY ACTIVITY	HRS	DEPTH	BHA	TIME	DAILY ACTIVITY	HRS	DEPTH	BHA
00:00-03:00	RIH With New BHA	3.00	1112	8	05:30-15:15	Orienting With Motor	9.75	1154	8
03:00-05:30	Rotating With Motor	2.50	1125	8	15:15-24:00	Rotating With Motor	8.75	1191	6

TIME SUMMARY (hrs):			DRILLING PARAMETERS:		
MOTOR DRILL: 21.00	ORIENTING HRS: 9.75	ROTARY DRILL: 0.00	ROTARY TORQUE: 55	STRING WEIGHT 86	
TIME DRILL: 0.00	ROTATING HRS: 11.25	MOTOR HRS: 21.00	WOB SLIDING (HI): 25000	WOB ROTATE (HI): 20000	
MOTOR REAM: 0.00		TRIP: 3.00	WOB SLIDING (LO): 20000	WOB ROTATE (LO): 20000	
CIRC: 0.00	ROTARY DRILL: 0.00	OTHER: 0.00	RPM (ROTARY): 60	DRAG UP: 97	
MOTOR HRS: 21.00	DRILL HRS: 21.00	TOTAL HRS: 24.00	RPM (MOTOR): 111	DRAG DN: 75	

BHA / MOTOR / BIT INFORMATION:

BHA: 6 HOLE SIZE: 8.5 SECTION TYPE: Hold SURVEY TYPE: Positive Pulse MWD
MANFCT.: PES STABILIZER: No SERIAL#: 675-2600 MODEL: LOBE CFG. 6/7
SETTING: 1.5 KICKPAD: No SIZE: 6 3/4" (171mm) MTR HRS THIS DAY: 21 MTR HRS TO DATE: 21
MANFCT: Smith BIT TYPE: Tri-Cone Bit TYPE: PJ4480 NOZZLES: 0.748 TFA
IADC BIT GRADE: ? / ? / ? / ? / ? / ? / ? / ?

PUMP PARAMETERS

PRESSURE ON BTM: 1300 PRESSURE OFF BTM: 1100 TOTAL FLOW RATE: 398.46
PUMP 1: TYPE: EFF.: 100.0% SPM: 57.00 LINER: 6.00 STROKE VOL.: 6.7900
PUMP 2: TYPE: EFF.: 100.0% SPM: 0.00 LINER: 0.00 STROKE VOL.: 0.0000
PUMP 3: TYPE: EFF.: 100.0% SPM: 0.00 LINER: 0.00 STROKE VOL.: 0.0000

MUD RECORD

MUD TYPE: Polymer VISC: 45 WTR LOSS: 6.3 PV: 21 YP: 17 pH: 10.5
DENSITY: 9.3 GEL Q10: 4.00 SAND: 0.25 SOLIDS: 6.1 OIL: 0 TEMP: 0
LIQUID BASE: Water LIQUID RATE: 0 GAS TYPE: GAS RATE: 0

COMMENTS:

Continued to RIH. Took two check shots for last two singles to test MWD. Depth correction of -10m was made for missing collar from rig count. Drilled depth corrected to 1111m. Inc angle was building quickly from rotation with previous BHA so began sliding to counteract from 1125-1154m. Succeeded in dropping angle to 1.58 degrees @ 1154.57m. While sliding reamed each Kelly twice. Continued this once we began rotating at 1154m. Rotate to 1191m.





Weatherford

Daily Activity Report

Day 15 - 2009/12/23

Drilling Services

V4.2.26/5

FILE #: 1010101

JOB TYPE:

RIG & NO: Hunt Energy 3

WELL NAME: Westwood # 1

COMPANY: Overseas Energy Holdings

SURFACE LOCATION: Haspden

SERVICE CO.: Precision Energy Services

SURVEY TYPE:

FIELD / LOCATION: Westwood / Tasmania / Australia

DIR Supervisor: Dan Power

MWD Supervisor: Olive Pickering, Faheem Khan

GROUND ELEV: 0

KB ELEV: 0

START DEPTH: 1191.0

END DEPTH: 1267.0

PROGRESS: 76.0

AVG. ROP: 4.2

DAILY COST: CAN\$0.00

PREVIOUS COST: CAN\$0.00

TOTAL COST: CAN\$0.00

WORK STATUS:

(All units are metric.)

TIME	DAILY ACTIVITY	HRS	DPH	BHA	TIME	DAILY ACTIVITY	HRS	DPH	BHA
00:00-04:15	Rotating With Motor	4.25	1207	6	10:45-18:00	Rotating With Motor	7.25	1252	6
04:15-10:45	Orienting With Motor	6.50	1228	6	18:00-24:00	Back Reaming	6.00	1267	6

TIME SUMMARY (hrs):

MOTOR DRILL: 18.00

TIME DRILL: 0.00

MOTOR REAM: 0.00

CIRC: 6.00

MOTOR HRS: 24.00

ORIENTING HRS: 6.50

ROTATING HRS: 11.50

ROTARY DRILL: 0.00

DRILL HRS: 18.00

TOTAL HRS: 24.00

ROTARY DRILL: 0.00

MOTOR HRS: 24.00

TRIP: 0.00

OTHER: 0.00

TOTAL HRS: 24.00

DRILLING PARAMETERS:

ROTARY TORQUE: 55

WOB SLIDING (HI): 20000

WOB SLIDING (LO): 20000

RPM (ROTARY): 60

RPM (MOTOR): 110

STRING WEIGHT 96

WOB ROTATE (HI): 20000

WOB ROTATE (LO): 15000

DRAG UP: 122

DRAG DN: 90

— BHA / MOTOR / BIT INFORMATION: —

BHA: 6

MANFCT.: PES

SETTING: 1.5

MANFCT: Smith

IADC BIT GRADE: ? / ? / ? / ? / ? / ? / ?

HOLE SIZE: 8.5

STABILIZER: No

KICKPAD: No

BIT TYPE: Tri-Cone Bit

SECTION TYPE: Hold

SERIAL#: 675-2600

SIZE: 6 3/4" (171mm)

TYPE: PJ4490

SURVEY TYPE: Positive Pulse MWD

MODEL:

MTR HRS THIS DAY: 24

NOZZLES: 0.746 TFA

LOBE CFG: 6/7

MTR HRS TO DATE: 45

— PUMP PARAMETERS —

PRESSURE ON BTM: 1290

PUMP 1: TYPE:

PUMP 2: TYPE:

PUMP 3: TYPE:

PRESSURE OFF BTM: 1140

EFF.: 100.0%

EFF.: 100.0%

EFF.: 100.0%

SPM: 57.00

SPM: 0.00

SPM: 0.00

TOTAL FLOW RATE: 396.46

LINER: 6.00

LINER: 0.00

LINER: 0.00

STROKE VOL.: 6.7800

STROKE VOL.: 0.0000

STROKE VOL.: 0.0000

— MUD RECORD —

MUD TYPE: Polymer

DENSITY: 9.3

LIQUID BASE: Water

VISC: 44

GEL 0/10: 4.00

WTR LOSS: 6.5

SAND: 0.25

LIQUID RATE: 0

PV: 16

SOLIDS: 5.9

GAS TYPE:

YP: 21

OIL: 0

pH: 10.5

TEMP: 0

GAS RATE: 0

— COMMENTS: —

Attempted to drop inc angle as trend had developed to West in Azimuth. Managed to drop inc but turned to South. Now trying to drop angle inc again and head to target. Torque is up when we rotate and ream down.





Weatherford

Daily Activity Report

Day 16 - 2009/12/24

Drilling Services

V4.2.26/5

FILE #: 1010101

JOB TYPE:

RIG & NO: Hunt Energy 3

WELL NAME: Westwood # 1

COMPANY: Overseas Energy Holdings

SURFACE LOCATION: Haspden

SERVICE CO.: Precision Energy Services

SURVEY TYPE:

FIELD / LOCATION: Westwood / Tasmania / Australia

DIR Supervisor: Dan Power

MWD Supervisor: Clive Pickering, Faheem Khan

GROUND ELEV: 0

KB ELEV: 0

START DEPTH: 1267.0

END DEPTH: 1332.0

PROGRESS: 65.0

AVG. ROP: 2.7

DAILY COST: CAN\$0.00

PREVIOUS COST: CAN\$0.00

TOTAL COST: CAN\$0.00

WORK STATUS:

(All units are metric.)

TIME	DAILY ACTIVITY	HRS	DPH	BHA	TIME	DAILY ACTIVITY	HRS	DPH	BHA
00:00-05:00	Orienting With Motor	5.00	1280.5	6	11:00-19:00	Rotating With Motor	8.00	1332	6
05:00-09:00	Rotating With Motor	4.00	1298	6	19:00-24:00	Orienting With Motor	5.00	1332	6
09:00-11:00	Orienting With Motor	2.00	1302	6			0.00		

TIME SUMMARY (hrs):

MOTOR DRILL: 24.00

TIME DRILL: 0.00

MOTOR REAM: 0.00

CIRC: 0.00

MOTOR HRS: 24.00

ORIENTING HRS: 12.00

ROTATING HRS: 12.00

ROTARY DRILL: 0.00

DRILL HRS: 24.00

TOTAL HRS: 24.00

ROTARY DRILL: 0.00

MOTOR HRS: 24.00

TRIP: 0.00

OTHER: 0.00

TOTAL HRS: 24.00

DRILLING PARAMETERS:

ROTARY TORQUE: 65

WOB SLIDING (HI): 25000

WOB SLIDING (LO): 15000

RPM (ROTARY): 60

RPM (MOTOR): 110

STRING WEIGHT: 100

WOB ROTATE (HI): 25000

WOB ROTATE (LO): 15000

DRAG UP: 128

DRAG DN: 84

— BHA / MOTOR / BIT INFORMATION: —

BHA: 6

HOLE SIZE: 8.5

SECTION TYPE: Hold

SURVEY TYPE: Positive Pulse MWD

MANFCT.: PES

STABILIZER: No

SERIAL#: 675-2600

MODEL:

LOBE CFG.#/7

SETTING: 1.5

KICKPAD: No

SIZE: 6 3/4" (171mm)

MTR HRS THIS DAY: 24

MTR HRS TO DATE: 69

MANFCT: Smith

BIT TYPE: Tri-Cone Bit

TYPE: PJ4490

NOZZLES: 0.746 TFA

IADC BIT GRADE: ? / ? / ? / ? / ? / ? / ? / ?

— PUMP PARAMETERS —

PRESSURE ON BTM: 1290

PRESSURE OFF BTM: 1140

TOTAL FLOW RATE: 396.46

PUMP 1: TYPE:

EFF.: 100.0%

SPM: 57.00

LINER: 6.00

STROKE VOL.: 6.7800

PUMP 2: TYPE:

EFF.: 100.0%

SPM: 0.00

LINER: 0.00

STROKE VOL.: 0.0000

PUMP 3: TYPE:

EFF.: 100.0%

SPM: 0.00

LINER: 0.00

STROKE VOL.: 0.0000

— MUD RECORD —

MUD TYPE: Polymer

VISC: 41

WTR LOSS: 6.5

PV: 15

YP: 17

pH: 10.5

DENSITY: 9.25

GEL 0/10: 4.00

SAND: 0.25

SOLIDS: 5.9

OIL: 0

TEMP: 0

LIQUID BASE: Water

LIQUID RATE: 0

GAS TYPE:

GAS RATE: 0

— COMMENTS: —

Managed to flip hole underneath itself and slid towards target. Under rotation dropping inc angle and turning to the left (West) on Azl.





Weatherford

Daily Activity Report

Day 17 - 2009/12/25

Drilling Services

V4.2.26/5

FILE #: 1010101

JOB TYPE:

RIG & NO: Hunt Energy 3

WELL NAME: Westwood # 1

COMPANY: Overseas Energy Holdings

SURFACE LOCATION: Haspden

SERVICE CO.: Precision Energy Services

SURVEY TYPE:

FIELD / LOCATION: Westwood / Tasmania / Australia

DIR Supervisor: Dan Power, Ned Clark

MWD Supervisor: Clive Pickering, Faheem Khan

GROUND ELEV: 0

KB ELEV: 0

START DEPTH: 1332.0

END DEPTH: 1391.0

PROGRESS: 59.0

AVG. ROP: 4.1

DAILY COST: CAN\$0.00

PREVIOUS COST: CAN\$0.00

TOTAL COST: CAN\$0.00

WORK STATUS:

(All units are metric.)

TIME	DAILY ACTIVITY	HRS	DPH	BHA	TIME	DAILY ACTIVITY	HRS	DPH	BHA
00:00-09:30	Orienting With Motor	9.50	1389	8	17:30-18:30	Other - See Comments - Spot 10BBLs at MWD	1.00	1391	8
09:30-14:30	Rotating With Motor	5.00	1391	8	18:30-24:00	POOH For MWD - MWD non functional.	5.50	1391	8
14:30-17:30	Other - See Comments - Unable to Srv. MWD n	3.00	1391	8			0.00		

TIME SUMMARY (hrs):

MOTOR DRILL: 14.50

TIME DRILL: 0.00

MOTOR REAM: 0.00

CIRC: 0.00

MOTOR HRS: 14.50

ORIENTING HRS: 9.50

ROTATING HRS: 5.00

ROTARY DRILL: 0.00

ROTARY DRILL: 0.00

DRILL HRS: 14.50

ROTARY DRILL: 0.00

MOTOR HRS: 14.50

TRIP: 5.50

OTHER: 4.00

TOTAL HRS: 24.00

DRILLING PARAMETERS:

ROTARY TORQUE: 65

WOB SLIDING (HI): 25000

WOB SLIDING (LO): 18000

RPM (ROTARY): 60

RPM (MOTOR): 110

STRING WEIGHT: 0

WOB ROTATE (HI): 25000

WOB ROTATE (LO): 18000

DRAG UP: 0

DRAG DN: 0

— BHA / MOTOR / BIT INFORMATION: —

BHA: 6

HOLE SIZE: 8.5

SECTION TYPE: Hold

SURVEY TYPE: Positive Pulse MWD

MANFCT.: PES

STABILIZER: 8 3/8" (213mm)

SERIAL#: 675-2600

MODEL:

LOBE CFG. 8/7

SETTING: 1.5

KICKPAD: No

SIZE: 6 3/4" (171mm)

MTR HRS THIS DAY: 14.5

MTR HRS TO DATE: 83.5

MANFCT: Smith

BIT TYPE: Tri-Cone Bit

TYPE: PJ4480

NOZZLES: 0.746 TFA

IADC BIT GRADE: ? / ? / ? / ? / ? / ? / ? / ?

— PUMP PARAMETERS —

PRESSURE ON BTM: 1290

PRESSURE OFF BTM: 1140

TOTAL FLOW RATE: 396.46

PUMP 1: TYPE:

EFF.: 100.0%

SPM: 57.00

LINER: 6.00

STROKE VOL.: 6.7900

PUMP 2: TYPE:

EFF.: 100.0%

SPM: 0.00

LINER: 0.00

STROKE VOL.: 0.0000

PUMP 3: TYPE:

EFF.: 100.0%

SPM: 0.00

LINER: 0.00

STROKE VOL.: 0.0000

— MUD RECORD —

MUD TYPE: Polymer

VISC: 41

WTR LOSS: 6.5

PV: 15

YP: 17

pH: 10.5

DENSITY: 9.25

GEL 0/10: 4.00

SAND: 0.25

SOLIDS: 5.9

OIL: 0

TEMP: 0

LIQUID BASE: Water

LIQUID RATE: 0

GAS TYPE:

GAS RATE: 0

— COMMENTS: —

New DD Ned Clarke arrives on site. Sliding @90 R to build angle slid 4 singles and turned hole to the East then began rotating. Detection problems with MWD tool trouble shoot, then decision made with company man to pull out of hole.





Weatherford®

Daily Activity Report

Day 18 - 2009/12/26

Drilling Services

V4.2.26/5

FILE #: 1010101
JOB TYPE:
RIG & NO: Hunt Energy 3

WELL NAME: Westwood # 1
COMPANY: Overseas Energy Holdings
SURFACE LOCATION: Haspden

SERVICE CO.: Precision Energy Services
SURVEY TYPE:
FIELD / LOCATION: Westwood / Tasmania / Australia

DIR Supervisor: Dan Power, Ned Clark
MWD Supervisor: Olive Pickering, Faheem Khan

GROUND ELEV: 0 START DEPTH: 1391.0 PROGRESS: 21.0 DAILY COST: CAN\$0.00
KB ELEV: 0 END DEPTH: 1412.0 AVG. ROP.: 3.0 PREVIOUS COST: CAN\$0.00
TOTAL COST: CAN\$0.00

WORK STATUS: (All units are metric.)

TIME	DAILY ACTIVITY	HRS	DPH	BHA	TIME	DAILY ACTIVITY	HRS	DPH	BHA
00:00-02:00	POOH For EM MWD	2.00	1391	7	16:30-17:00	EM MWD Surveys - Check Shot	0.50	1391	7
02:00-06:00	Other - See Comments - Service Mule Shoe	4.00	1391	7	17:00-17:15	Rotating With Motor	0.25	1391	7
06:00-07:15	Other - See Comments - Change bit Ori sub	1.25	1391	7	17:15-19:15	Rotary Drill	2.00	1391	7
07:15-09:45	Work On EM MWD - Assemble new tool	2.50	1391	7	19:15-21:15	Orienting With Motor - 80 deg Left	2.00	1398	7
09:45-10:15	RIH With New BHA	0.50	1391	7	21:15-22:45	Rotating With Motor	1.50	1409	7
10:15-10:30	Shallow Pulse Check	0.25	1391	7	22:45-24:00	Orienting With Motor	1.25	1412	7
10:30-16:30	RIH With New BHA	6.00	1391	7			0.00		

TIME SUMMARY (hrs):				DRILLING PARAMETERS:			
MOTOR DRILL:	5.00	ORIENTING HRS:	3.25	ROTARY DRILL:	2.00	ROTARY TORQUE:	50000
TIME DRILL:	0.00	ROTATING HRS:	1.75	MOTOR HRS:	5.25	WOB SLIDING (HI):	15000
MOTOR REAM:	0.00			TRIP:	8.50	WOB ROTATE (HI):	15000
CIRC:	0.25	ROTARY DRILL:	2.00	OTHER:	8.25	WOB SLIDING (LO):	15000
MOTOR HRS:	5.25	DRILL HRS:	7.00	TOTAL HRS:	24.00	RPM (ROTARY):	60
						RPM (MOTOR):	110
						DRAG UP:	120000
						DRAG DN:	80000

BHA / MOTOR / BIT INFORMATION:

BHA: 7 HOLE SIZE: 8.5 SECTION TYPE: Hold SURVEY TYPE: Positive Pulse MWD
MANFCT.: PES STABILIZER: 8 3/8" (213mm) SERIAL#: 675-2600 MODEL: LOBE CFG.8/7
SETTING: 1.5 KICKPAD: No SIZE: 6 3/4" (171mm) MTR HRS THIS DAY: 5.25 MTR HRS TO DATE: 98.75
MANFCT: Smith BIT TYPE: Tri-Cone Bit TYPE: GF150DPS NOZZLES: 0.746 TFA
IADC BIT GRADE: ? / ? / ? / ? / ? / ? / ? / ?

PUMP PARAMETERS

PRESSURE ON BTM: 1450 PRESSURE OFF BTM: 1400 TOTAL FLOW RATE: 396.46
PUMP 1: TYPE: EFF.: 100.0% SPM: 57.00 LINER: 6.00 STROKE VOL.: 6.7900
PUMP 2: TYPE: EFF.: 100.0% SPM: 0.00 LINER: 0.00 STROKE VOL.: 0.0000
PUMP 3: TYPE: EFF.: 100.0% SPM: 0.00 LINER: 0.00 STROKE VOL.: 0.0000

MUD RECORD

MUD TYPE: Polymer VISC: 41 WTR LOSS: 8.5 PV: 16 YP: 19 pH: 10.5
DENSITY: 9.35 GEL Q'10: 4.00 SAND: 0.1 SOLIDS: 6.6 OIL: 0 TEMP: 0
LIQUID BASE: Water LIQUID RATE: 0 GAS TYPE: GAS RATE: 0

COMMENTS:

Continue POOH. Couldn't get grubscrew and locking nut out of muleshoe. Changed bit and Ori sub laid out 4 DC's. PU new MWD tool and RIH. Shallow pulse test and check shots off bottom. Survey @ 1391m and continued drilling. Survey showed 6.12 Inc and 112 Azi. Slide for correct Azi to the left and turned very quickly! 15degrees on slide and another 24 degrees on next kelly which was rotated! Suggests that ground pulls to the left.





Weatherford®

Daily Activity Report

Day 19 - 2009/12/27

Drilling Services

V4.2.05/5

FILE #: 1010101

JOB TYPE:

RIG & NO: Hunt Energy 3

WELL NAME: Westwood # 1

COMPANY: Overseas Energy Holdings

SURFACE LOCATION: Haspden

SERVICE CO.: Precision Energy Services

SURVEY TYPE:

FIELD / LOCATION: Westwood / Tasmania / Australia

DIR Supervisor: Dan Power, Ned Clark

MWD Supervisor: Olive Pickering, Faheem Khan

GROUND ELEV: 0

KB ELEV: 0

START DEPTH: 1412.0

END DEPTH: 1501.0

PROGRESS: 89.0

AVG. ROP.: 3.8

DAILY COST: CAN\$0.00

PREVIOUS COST: CAN\$0.00

TOTAL COST: CAN\$0.00

WORK STATUS:

(All units are metric.)

TIME	DAILY ACTIVITY	HRS	DPTH	BHA	TIME	DAILY ACTIVITY	HRS	DPTH	BHA
00:00-01:30	Orienting With Motor - Steer 80 degs Left	1.50	1412	7	16:15-16:30	Rig Service	0.25	1474	7
01:30-04:15	Orienting With Motor - Oriented @75 Left	2.75	1422	7	16:30-20:00	Orienting With Motor - 110 Right	3.50	1483	7
04:15-08:15	Rotating With Motor	4.00	1445	7	20:00-22:15	Rotating With Motor	2.25	1492	7
08:15-09:15	Orienting With Motor - 180	1.00	1449	7	22:15-24:00	Orienting With Motor - 165R	1.75	1501	7
09:15-16:15	Rotating With Motor	7.00	1474	7			0.00		

TIME SUMMARY (hrs):

MOTOR DRILL: 23.75

TIME DRILL: 0.00

MOTOR REAM: 0.00

CIRC: 0.00

MOTOR HRS: 23.75

ORIENTING HRS: 10.50

ROTATING HRS: 13.25

ROTARY DRILL: 0.00

DRILL HRS: 23.75

ROTARY DRILL: 0.00

MOTOR HRS: 23.75

TRIP: 0.00

OTHER: 0.25

TOTAL HRS: 24.00

DRILLING PARAMETERS:

ROTARY TORQUE: 50000 ft lbs

WOB SLIDING (HI): 15000

WOB SLIDING (LO): 15000

RPM (ROTARY): 60

RPM (MOTOR): 110

STRING WEIGHT: 100000

WOB ROTATE (HI): 15000

WOB ROTATE (LO): 15000

DRAG UP: 140000

DRAG DN: 90000

— BHA / MOTOR / BIT INFORMATION: —

BHA: 7

HOLE SIZE: 8.5

SECTION TYPE: Hold

SURVEY TYPE: Positive Pulse MWD

MANFCT.: PES

STABILIZER: 8 3/8" (213mm)

SERIAL#: 875-2600

MODEL:

LOBE CFG.8/7

SETTING: 1.5

KICKPAD: No

SIZE: 6 3/4" (171mm)

MTR HRS THIS DAY: 23.75

MTR HRS TO DATE: 112.5

MANFCT: Smith

BIT TYPE: Tri-Cone Bit

TYPE: GF150DPS

NOZZLES: 0.746 TFA

IADC BIT GRADE: ? / ? / ? / ? / ? / ? / ? / ?

— PUMP PARAMETERS —

PRESSURE ON BTM: 1350

PRESSURE OFF BTM: 1300

TOTAL FLOW RATE: 396.46

PUMP 1: TYPE:

EFF.: 100.0%

SPM: 57.00

LINER: 6.00

STROKE VOL.: 6.7800

PUMP 2: TYPE:

EFF.: 100.0%

SPM: 0.00

LINER: 0.00

STROKE VOL.: 0.0000

PUMP 3: TYPE:

EFF.: 100.0%

SPM: 0.00

LINER: 0.00

STROKE VOL.: 0.0000

— MUD RECORD —

MUD TYPE: Polymer

VISC: 40

WTR LOSS: 6.4

PV: 16

YP: 20

pH: 10.5

DENSITY: 9.3

GEL 0/10: 4.00

SAND: 0.1

SOLIDS: 6.3

OIL: 0

TEMP: 0

LIQUID BASE: Water

LIQUID RATE: 0

GAS TYPE:

GAS RATE: 0

— COMMENTS: —

Made plan to drop angle out of hole and drill to cross new target line. Azimuth swinging to left so tried to counteract this by sliding to the right.





Weatherford®

Daily Activity Report

Day 20 - 2009/12/28

Drilling Services

V4.2.25/5

FILE #: 1010101
JOB TYPE:
RIG & NO: Hunt Energy 3

WELL NAME: Westwood # 1
COMPANY: Overseas Energy Holdings
SURFACE LOCATION: Haspden

SERVICE CO.: Precision Energy Services
SURVEY TYPE:
FIELD / LOCATION: Westwood / Tasmania / Australia

DIR Supervisor: Dan Power, Ned Clark
MWD Supervisor: Clive Pickering, Faheem Khan

GROUND ELEV: 0 START DEPTH: 1501.0 PROGRESS: 16.2 DAILY COST: CAN\$0.00
KB ELEV: 0 END DEPTH: 1517.2 AVG. ROP.: 5.4 PREVIOUS COST: CAN\$0.00
TOTAL COST: CAN\$0.00

WORK STATUS: (All units are metric.)

TIME	DAILY ACTIVITY	HRS	DPTH	BHA	TIME	DAILY ACTIVITY	HRS	DPTH	BHA
00:00-00:30	Orienting With Motor - 16SR	0.50	1503	7	11:45-13:00	Wait On MWD Tools - 1.15 bend LO SS	1.25	517.24	8
00:30-02:30	Rotating With Motor	2.00	1512	7	13:00-14:30	Change MWD - PO MWD Scribe Mr	1.00	517.24	8
02:30-03:00	Orienting With Motor - Steer at 175R	0.50	517.24	7	14:00-14:15	RIH With New BHA	0.25	517.24	8
03:00-07:00	Other - See Comments - Unable to get MWD TF	4.00	517.24	7	14:15-14:30	Shallow Pulse Check	0.25	517.24	8
07:00-07:30	Circ Bottoms Up	0.50	517.24	7	14:30-15:45	RIH With New BHA	1.25	517.24	8
07:30-10:30	POOH For MWD	3.00	517.24	7	15:45-16:00	Shallow Test Tools	0.25	517.24	8
10:30-11:45	Change MWD	1.25	517.24	7	16:00-24:00	RIH With New BHA	8.00	517.24	8

TIME SUMMARY (hrs):				DRILLING PARAMETERS:			
MOTOR DRILL: 3.00	ORIENTING HRS: 0.00	ROTARY DRILL: 0.00	ROTARY TORQUE: 5500	STRING WEIGHT 100000			
TIME DRILL: 0.00	ROTATING HRS: 0.00	MOTOR HRS: 3.75	WOB SLIDING (HI): 15	WOB ROTATE (HI): 15			
MOTOR REAM: 0.00		TRIP: 12.50	WOB SLIDING (LO): 15	WOB ROTATE (LO): 15			
CIRC: 0.75	ROTARY DRILL: 0.00	OTHER: 7.75	RPM (ROTARY): 55	DRAG UP: 160000			
MOTOR HRS: 3.75	DRILL HRS: 3.00	TOTAL HRS: 24.00	RPM (MOTOR): 110	DRAG DN: 80000			

— BHA / MOTOR / BIT INFORMATION: —

BHA: 7 HOLE SIZE: 8.5 SECTION TYPE: Hold SURVEY TYPE: Positive Pulse MWD
MANFCT.: PES STABILIZER: 8 3/8" (213mm) SERIAL#: 675-2600 MODEL: LOBE CFG.#/7
SETTING: 1.5 KICKPAD: No SIZE: 6 3/4" (171mm) MTR HRS THIS DAY: 3.5 MTR HRS TO DATE: 116
MANFCT: Smith BIT TYPE: Tri-Cone Bit TYPE: GF150DPS NOZZLES: 0.748 TFA
IADC BIT GRADE: 4 / 7 / BT / G / E / 1 / SD / DTF

BHA: 8 HOLE SIZE: 8.5 SECTION TYPE: Hold SURVEY TYPE: Positive Pulse MWD
MANFCT.: PES STABILIZER: No SERIAL#: 675-2600 MODEL: LOBE CFG.#/7
SETTING: 1.15 KICKPAD: No SIZE: 6 3/4" (171mm) MTR HRS THIS DAY: 0.25 MTR HRS TO DATE: 116.25
MANFCT: Reed BIT TYPE: Tri-Cone Bit TYPE: R30APDH NOZZLES: 0.748 TFA
IADC BIT GRADE: ? / ? / ? / ? / ? / ? / ? / ?

— PUMP PARAMETERS —

PRESSURE ON BTM: 1400 PRESSURE OFF BTM: 1300 TOTAL FLOW RATE: 398.46
PUMP 1: TYPE: EFF.: 100.0% SPM: 57.00 LINER: 6.00 STROKE VOL.: 6.7900
PUMP 2: TYPE: EFF.: 100.0% SPM: 0.00 LINER: 0.00 STROKE VOL.: 0.0000
PUMP 3: TYPE: EFF.: 100.0% SPM: 0.00 LINER: 0.00 STROKE VOL.: 0.0000

— MUD RECORD —

MUD TYPE: Polymer VISC: 40 WTR LOSS: 6.6 PV: 16 YP: 17 pH: 10
DENSITY: 9.3 GEL 0/10: 3.00 SAND: 0.1 SOLIDS: 6.3 OIL: 0 TEMP: 0
LIQUID BASE: Water LIQUID RATE: 0 GAS TYPE: GAS RATE: 0

— COMMENTS: —

Drilling ahead. MWD problems it would not switch from Gravity to Magnetic (Threshold was set at 5 degrees). We were able to continue drilling until 1517.4m when we lost signal and pulses. POOH to change out MWD and BHA.





Weatherford®

Daily Activity Report

Day 21 - 2009/12/29

Drilling Services

V4.2.26/5

FILE #: 1010101

JOB TYPE:

RIG & NO: Hunt Energy 3

WELL NAME: Westwood # 1

COMPANY: Overseas Energy Holdings

SURFACE LOCATION: Haspden

SERVICE CO.: Precision Energy Services

SURVEY TYPE:

FIELD / LOCATION: Westwood / Tasmania / Australia

DIR Supervisor: Dan Power, Ned Clark

MWD Supervisor: Clive Pickering, Faheem Khan

GROUND ELEV: 0

KB ELEV: 0

START DEPTH: 1517.2

END DEPTH: 1578.0

PROGRESS: 60.9

AVG. ROP: 3.1

DAILY COST: CAN\$0.00

PREVIOUS COST: CAN\$0.00

TOTAL COST: CAN\$0.00

WORK STATUS:

(All units are metric.)

TIME	DAILY ACTIVITY	HRS	DPH	BHA	TIME	DAILY ACTIVITY	HRS	DPH	BHA
00:00-03:00	RIH With New BHA	3.00	517.24	8	12:30-14:00	Rig Service - Radiator Overheating	1.50	1548	8
03:00-03:45	Rotating With Motor	0.75	1519	8	14:00-22:00	Orienting With Motor - 180	8.00	1567	8
03:45-05:45	Orienting With Motor - Steer at 175R	2.00	1528	8	22:00-23:30	Orienting With Motor - Steer @ 170R	1.50	1577	8
05:45-12:30	Orienting With Motor - Steer @ 170R	6.75	1548	8	23:30-24:00	Orienting With Motor	0.50	1578	8

TIME SUMMARY (hrs):

MOTOR DRILL: 19.50

TIME DRILL: 0.00

MOTOR REAM: 0.00

CIRC: 0.00

MOTOR HRS: 19.50

ORIENTING HRS: 18.75

ROTATING HRS: 0.75

ROTARY DRILL: 0.00

DRILL HRS: 19.50

ROTARY DRILL: 0.00

MOTOR HRS: 19.50

TRIP: 3.00

OTHER: 1.50

TOTAL HRS: 24.00

DRILLING PARAMETERS:

ROTARY TORQUE: 3500

WOB SLIDING (HI): 17000

WOB SLIDING (LO): 15000

RPM (ROTARY): 50

RPM (MOTOR): 110

STRING WEIGHT: 100000

WOB ROTATE (HI): 20000

WOB ROTATE (LO): 10000

DRAG UP: 160000

DRAG DN: 80000

— BHA / MOTOR / BIT INFORMATION:

BHA: 8

MANFCT.: PES

SETTING: 1.15

MANFCT: Reed

HOLE SIZE: 8.5

STABILIZER: No

KICKPAD: No

BIT TYPE: Tri-Cone Bit

SECTION TYPE: Hold

SERIAL#: 675-2600

SIZE: 6 3/4" (171mm)

TYPE: R30APDH

SURVEY TYPE: Positive Pulse MWD

MODEL:

LOBE CFG: 8/7

MTR HRS THIS DAY: 19.5

NOZZLES: 0.748 TFA

MTR HRS TO DATE: 135.75

IADC BIT GRADE: ? / ? / ? / ? / ? / ? / ? / ?

— PUMP PARAMETERS

PRESSURE ON BTM: 1350

PUMP 1: TYPE:

PUMP 2: TYPE:

PUMP 3: TYPE:

PRESSURE OFF BTM: 1300

EFF.: 100.0%

EFF.: 100.0%

EFF.: 100.0%

SPM: 57.00

SPM: 0.00

SPM: 0.00

TOTAL FLOW RATE: 398.46

LINER: 6.00

LINER: 0.00

LINER: 0.00

STROKE VOL.: 6.7900

STROKE VOL.: 0.0000

STROKE VOL.: 0.0000

— MUD RECORD

MUD TYPE: Polymer

DENSITY: 9.3

LIQUID BASE: Water

VISC: 42

GEL Q10: 4.00

WTR LOSS: 6.5

SAND: 0.1

LIQUID RATE: 0

PV: 17

SOLIDS: 6.3

GAS TYPE:

YP: 22

OIL: 0

pH: 10.1

TEMP: 0

GAS RATE: 0

— COMMENTS:

Continue running in hole with BHA #8. Continue drilling ahead sliding @ 170R every Kelly to drop angle in hole. Well continuing to build angle and turn to left.





Weatherford®

Daily Activity Report

Day 22 - 2009/12/30

Drilling Services

V4.2.26/5

FILE#: 1010101
JOB TYPE:
RIG & NO: Hunt Energy 3

WELL NAME: Westwood # 1
COMPANY: Overseas Energy Holdings
SURFACE LOCATION: Haspden

SERVICE CO.: Precision Energy Services
SURVEY TYPE:
FIELD / LOCATION: Westwood / Tasmania / Australia

DIR Supervisor: Dan Power, Ned Clark
MWD Supervisor: Clive Pickering, Faheem Khan

GROUND ELEV: 0 START DEPTH: 1578.0 PROGRESS: 26.6 DAILY COST: CAN\$0.00
KB ELEV: 0 END DEPTH: 1604.6 AVG. ROP: 3.8 PREVIOUS COST: CAN\$0.00
TOTAL COST: CAN\$0.00

WORK STATUS: (All units are metric.)

TIME	DAILY ACTIVITY	HRS	DPTH	BHA	TIME	DAILY ACTIVITY	HRS	DPTH	BHA
00:00-02:00	Orienting With Motor - Steer 170R	2.00	1598	8	16:30-17:30	Shallow Pulse Check	0.50	1604.57	9
02:00-04:00	Orienting With Motor - Steer at 175R	2.00	1598	8	17:00-17:30	RIH With New BHA	0.50	1604.57	9
04:00-07:00	Orienting With Motor	3.00	1604.57	8	17:30-18:30	Shallow Pulse Check	1.00	1604.57	9
07:00-08:00	Other - See Comments - Flow check	1.00	1604.57	8	18:30-19:30	Slip And Out	1.00	1604.57	9
08:00-12:30	POOH To Change BHA	4.50	1604.57	8	19:30-24:00	RIH With New BHA	4.50	1604.57	9
12:30-16:30	Change Bit And Motor - Set mtr to 1.5	4.00	1604.57	9			0.00		

TIME SUMMARY (hrs):			DRILLING PARAMETERS:		
MOTOR DRILL: 7.00	ORIENTING HRS: 0.00	ROTARY DRILL: 0.00	ROTARY TORQUE: 3500	STRING WEIGHT	120000
TIME DRILL: 0.00	ROTATING HRS: 0.00	MOTOR HRS: 8.50	WOB SLIDING (HI): 20000	WOB ROTATE (HI):	0
MOTOR REAM: 0.00		TRIP: 9.50	WOB SLIDING (LO): 15000	WOB ROTATE (LO):	0
CIRC: 1.50	ROTARY DRILL: 0.00	OTHER: 6.00	RPM (ROTARY):	DRAG UP:	185000
MOTOR HRS: 8.50	DRILL HRS: 7.00	TOTAL HRS: 24.00	RPM (MOTOR): 110	DRAG DN:	90000

— BHA / MOTOR / BIT INFORMATION: —

BHA: 8 HOLE SIZE: 8.5 SECTION TYPE: Hold SURVEY TYPE: Positive Pulse MWD
MANFCT.: PES STABILIZER: No SERIAL#: 675-2600 MODEL: LOBE CFG.#7
SETTING: 1.15 KICKPAD: No SIZE: 6 3/4" (171mm) MTR HRS THIS DAY: 7 MTR HRS TO DATE: 142.75
MANFCT: Reed BIT TYPE: Tri-Cone Bit TYPE: R30APDH NOZZLES: 0.748 TFA
IADC BIT GRADE: ? / ? / ? / ? / ? / ? / ?

BHA: 9 HOLE SIZE: 8.5 SECTION TYPE: Hold SURVEY TYPE: Positive Pulse MWD
MANFCT.: PES STABILIZER: 8 3/8" (213mm) SERIAL#: 675-2355 MODEL: LE6754 LOBE CFG.#7
SETTING: 1.5 KICKPAD: No SIZE: 6 3/4" (171mm) MTR HRS THIS DAY: 1.5 MTR HRS TO DATE: 1.5
MANFCT: Smith BIT TYPE: Tri-Cone Bit TYPE: FH30 NOZZLES: 0.92 TFA
IADC BIT GRADE: ? / ? / ? / ? / ? / ? / ?

— PUMP PARAMETERS —

PRESSURE ON BTM: 1350 PRESSURE OFF BTM: 1300 TOTAL FLOW RATE: 396.46
PUMP 1: TYPE: EFF.: 100.0% SPM: 57.00 LINER: 6.00 STROKE VOL.: 6.7800
PUMP 2: TYPE: EFF.: 100.0% SPM: 0.00 LINER: 0.00 STROKE VOL.: 0.0000
PUMP 3: TYPE: EFF.: 100.0% SPM: 0.00 LINER: 0.00 STROKE VOL.: 0.0000

— MUD RECORD —

MUD TYPE: Polymer VISC: 43 WTR LOSS: 6.8 PV: 16 YP: 19 pH: 9.7
DENSITY: 9.3 GEL 0/10: 4.00 SAND: 0.1 SOLIDS: 6.3 OIL: 0 TEMP: 0
LIQUID BASE: Water LIQUID RATE: 0 GAS TYPE: GAS RATE: 0

— COMMENTS: —

Continued to slide to drop inc initially this seemed to work and we saw some drop and Azi locked in around 265 degrees.





Weatherford®

Daily Activity Report

Day 23 - 2009/12/31

Drilling Services

V4.2.26/5

FILE #: 1010101

JOB TYPE:

RIG & NO: Hunt Energy 3

WELL NAME: Westwood # 1

COMPANY: Overseas Energy Holdings

SURFACE LOCATION: Haspden

SERVICE CO.: Precision Energy Services

SURVEY TYPE:

FIELD / LOCATION: Westwood / Tasmania / Australia

DIR Supervisor: Dan Power, Ned Clark

MWD Supervisor: Clive Pickering, Faheem Khan

GROUND ELEV: 0

KB ELEV: 0

START DEPTH: 1604.6

END DEPTH: 1665.0

PROGRESS: 60.4

AVG. ROP.: 2.8

DAILY COST: CAN\$0.00

PREVIOUS COST: CAN\$0.00

TOTAL COST: CAN\$0.00

WORK STATUS:

(All units are metric.)

TIME	DAILY ACTIVITY	HRS	DEPTH	BHA	TIME	DAILY ACTIVITY	HRS	DEPTH	BHA
00:00-00:30	RIH With New BHA	0.50	604.57	9	08:15-11:30	Orienting With Motor - Steer 90 R	3.25	1632	9
00:30-01:15	EM MWD Surveys - Check shots	0.75	604.57	9	11:30-15:00	Orienting With Motor	3.50	1642	9
01:15-07:15	Orienting With Motor - @ 90R	6.00	1622	9	15:00-16:30	Rotating With Motor	1.00	1644	9
07:15-08:15	Ream - See Comments - 220 up / 85 down jar'y	1.00	1622	9	16:00-24:00	Orienting With Motor - Steer 110R	8.00	1665	9

TIME SUMMARY (hrs):

MOTOR DRILL: 21.75

TIME DRILL: 0.00

MOTOR REAM: 1.00

CIRC: 0.00

MOTOR HRS: 22.75

ORIENTING HRS: 20.75

ROTATING HRS: 1.00

ROTARY DRILL: 0.00

ROTARY DRILL: 0.00

DRILL HRS: 21.75

ROTARY DRILL: 0.00

MOTOR HRS: 22.75

TRIP: 0.50

OTHER: 0.75

TOTAL HRS: 24.00

DRILLING PARAMETERS:

ROTARY TORQUE: 4500

WOB SLIDING (HI): 20000

WOB SLIDING (LO): 15000

RPM (ROTARY): 45

RPM (MOTOR): 110

STRING WEIGHT: 120

WOB ROTATE (HI): 20000

WOB ROTATE (LO): 15000

DRAG UP: 220

DRAG DN: 85

— BHA / MOTOR / BIT INFORMATION: —

BHA: 9

HOLE SIZE: 8.5

SECTION TYPE: Hold

SURVEY TYPE: Positive Pulse MWD

MANFCT.: PES

STABILIZER: 8 3/8" (213mm)

SERIAL#: 675-2355

MODEL: LE6754

LOBE CFG: 8/7

SETTING: 1.5

KICKPAD: No

SIZE: 6 3/4" (171mm)

MTR HRS THIS DAY: 22.75

MTR HRS TO DATE: 24.25

MANFCT: Smith

BIT TYPE: Tri-Cone Bit

TYPE: FH30

NOZZLES: 0.92 TFA

IADC BIT GRADE: ? / ? / ? / ? / ? / ? / ? / ?

— PUMP PARAMETERS —

PRESSURE ON BTM: 1350

PRESSURE OFF BTM: 1250

TOTAL FLOW RATE: 0.00

PUMP 1: TYPE:

EFF.: 1.0%

SPM: 0.00

LINER: 0.00

STROKE VOL.: 0.0000

PUMP 2: TYPE:

EFF.: 100.0%

SPM: 0.00

LINER: 0.00

STROKE VOL.: 0.0000

PUMP 3: TYPE:

EFF.: 100.0%

SPM: 0.00

LINER: 0.00

STROKE VOL.: 0.0000

— MUD RECORD —

MUD TYPE: Polymer

VISC: 43

WTR LOSS: 6.8

PV: 16

YP: 19

pH: 9.7

DENSITY: 9.3

GEL 0/10: 4.00

SAND: 0.1

SOLIDS: 6.3

OIL: 0

TEMP: 0

LIQUID BASE: Water

LIQUID RATE: 0

GAS TYPE:

GAS RATE: 0

— COMMENTS: —

Last 3 slides we saw started to lift again so decision was made to POOH and change BHA. Dropped out SS and picked up new motor with 1.5 bend. RIH shallow pulse test. Check shots as near bottom. Slide to right to cross target line.





Weatherford®

Daily Activity Report

Day 24 - 2010/01/01

Drilling Services

V4.2.2b/s

FILE #: 1010101
JOB TYPE:
RIG & NO: Hunt Energy 3

WELL NAME: Westwood # 1
COMPANY: Overseas Energy Holdings
SURFACE LOCATION: Haspden

SERVICE CO.: Precision Energy Services
SURVEY TYPE:
FIELD / LOCATION: Westwood / Tasmania / Australia

DIR Supervisor: Dan Power
MWD Supervisor: Olive Pickering, Faheem Khan

GROUND ELEV: 0 START DEPTH: 1665.0 PROGRESS: 14.0 DAILY COST: CAN\$0.00
KB ELEV: 0 END DEPTH: 1679.0 AVG. ROP.: 2.5 PREVIOUS COST: CAN\$0.00
TOTAL COST: CAN\$0.00

WORK STATUS: (All units are metric.)

TIME	DAILY ACTIVITY	HRS	DEPTH	BHA	TIME	DAILY ACTIVITY	HRS	DEPTH	BHA
00:00-05:30	Orienting With Motor - TD	5.50	1679	9	13:00-13:30	W/L Surveys & Orienting - Rig up W/L	0.50	1679	9
05:30-06:30	Circ Bottoms Up	1.00	1679	9	13:30-21:00	W/L Surveys & Orienting	7.50	1679	9
06:30-11:00	POOH - See Comments - TD	4.50	1679	9	21:00-22:30	W/L Surveys & Orienting - Rig Down W/L	1.50	1679	9
11:00-12:00	Work On MWD - LO MWD	1.00	1679	9	22:30-23:30	Standby - Waiting on decision	1.00	1679	9
12:00-13:00	Lay Down Directional Tools - LO BHA	1.00	1679	9			0.00		

TIME SUMMARY (hrs):				DRILLING PARAMETERS:			
MOTOR DRILL: 5.50	ORIENTING HRS: 5.50	ROTARY DRILL: 0.00	ROTARY TORQUE: 45	STRING WEIGHT 120			
TIME DRILL: 0.00	ROTATING HRS: 0.00	MOTOR HRS: 6.50	WOB SLIDING (HI): 20000	WOB ROTATE (HI): 20000			
MOTOR REAM: 0.00		TRIP: 4.50	WOB SLIDING (LO): 15000	WOB ROTATE (LO): 15000			
CIRC: 1.00	ROTARY DRILL: 0.00	OTHER: 12.50	RPM (ROTARY): 45	DRAG UP: 220			
MOTOR HRS: 6.50	DRILL HRS: 5.50	TOTAL HRS: 23.50	RPM (MOTOR): 110	DRAG DN: 85			

— BHA / MOTOR / BIT INFORMATION: —

BHA: 9 HOLE SIZE: 8.5 SECTION TYPE: Hold SURVEY TYPE: Positive Pulse MWD
MANFCT.: PES STABILIZER: 8 3/8" (213mm) SERIAL#: 675-2355 MODEL: LE6754 LOBE CFG: 6/7
SETTING: 1.5 KICKPAD: No SIZE: 6 3/4" (171mm) MTR HRS THIS DAY: 6.5 MTR HRS TO DATE: 30.75
MANFCT: Smith BIT TYPE: Tri-Cone Bit TYPE: FH30 NOZZLES: 0.92 TFA
IADC BIT GRADE: 5 / 4 / BT / G / E / I / BT / TD

— PUMP PARAMETERS —

PRESSURE ON BTM: 1350 PRESSURE OFF BTM: 1250 TOTAL FLOW RATE: 3.67
PUMP 1: TYPE: EFF.: 1.0% SPM: 57.00 LINER: 6.00 STROKE VOL.: 6.7800
PUMP 2: TYPE: EFF.: 100.0% SPM: 0.00 LINER: 0.00 STROKE VOL.: 0.0000
PUMP 3: TYPE: EFF.: 100.0% SPM: 0.00 LINER: 0.00 STROKE VOL.: 0.0000

— MUD RECORD —

MUD TYPE: Polymer VISC: 42 WTR LOSS: 6.8 PV: 17 YP: 19 pH: 9.6
DENSITY: 9.3 GEL 0/10: 4.00 SAND: 0.1 SOLIDS: 6.3 OIL: 0 TEMP: 0
LIQUID BASE: Water LIQUID RATE: 0 GAS TYPE: GAS RATE: 0

— COMMENTS: —

Sliding hard right to cross target line to TD @1679m. Circulate bottoms up. POOH and LO BHA and MWD. Rig up wireline and run. Waiting on client for decision on sidetrack or P&A.





Weatherford®

Daily Activity Report

Day 25 - 2010/01/02

Drilling Services

V4.2.2b/s

FILE #: 1010101
JOB TYPE:
RIG & NO: Hunt Energy 3

WELL NAME: Westwood # 1
COMPANY: Overseas Energy Holdings
SURFACE LOCATION: Haspden

SERVICE CO.: Precision Energy Services
SURVEY TYPE:
FIELD / LOCATION: Westwood / Tasmania / Australia

DIR Supervisor: Dan Power
MWD Supervisor: Olive Pickering, Faheem Khan

GROUND ELEV: 0 START DEPTH: 1679.0 PROGRESS: 0.0 DAILY COST: CAN\$0.00
KB ELEV: 0 END DEPTH: 1679.0 AVG. ROP: 0.0 PREVIOUS COST: CAN\$0.00
TOTAL COST: CAN\$0.00

WORK STATUS: (All units are metric.)

TIME	DAILY ACTIVITY	HRS	DEPTH	BHA	TIME	DAILY ACTIVITY	HRS	DEPTH	BHA
00:00-24:00	Standby	24.00	1679	n/a			0.00		

TIME SUMMARY (hrs):					DRILLING PARAMETERS:				
MOTOR DRILL: 0.00	ORIENTING HRS: 0.00	ROTARY DRILL: 0.00	ROTARY TORQUE:	STRING WEIGHT 0					
TIME DRILL: 0.00	ROTATING HRS: 0.00	MOTOR HRS: 0.00	WOB SLIDING (HI): 0	WOB ROTATE (HI): 0					
MOTOR REAM: 0.00		TRIP: 0.00	WOB SLIDING (LO): 0	WOB ROTATE (LO): 0					
CIRC: 0.00	ROTARY DRILL: 0.00	OTHER: 24.00	RPM (ROTARY):	DRAG UP: 0					
MOTOR HRS: 0.00	DRILL HRS: 0.00	TOTAL HRS: 24.00	RPM (MOTOR):	DRAG DN: 0					

— BHA / MOTOR / BIT INFORMATION: —

BHA: HOLE SIZE: SECTION TYPE: SURVEY TYPE:
MANFCT.: STABILIZER: SERIAL#: MODEL: LOBE CFG.:
SETTING: KICKPAD: SIZE: MTR HRS THIS DAY: MTR HRS TO DATE:
MANFCT: BIT TYPE: TYPE: NOZZLES:
IADC BIT GRADE:

— PUMP PARAMETERS —

PRESSURE ON BTM: 0 PRESSURE OFF BTM: 0 TOTAL FLOW RATE: 0.00
PUMP 1: TYPE: EFF.: 1.0% SPM: 0.00 LINER: 0.00 STROKE VOL.: 0.0000
PUMP 2: TYPE: EFF.: 100.0% SPM: 0.00 LINER: 0.00 STROKE VOL.: 0.0000
PUMP 3: TYPE: EFF.: 100.0% SPM: 0.00 LINER: 0.00 STROKE VOL.: 0.0000

— MUD RECORD —

MUD TYPE: VISC: 0 WTR LOSS: 0 PV: 0 YP: 0 pH: 0
DENSITY: 0 GEL 0/10: 0.00 SAND: 0 SOLIDS: 0 OIL: 0 TEMP: 0
LIQUID BASE: LIQUID RATE: 0 GAS TYPE: GAS RATE: 0

— COMMENTS: —

Standby waiting for decision from client. 3 plugs set @ 840-740m, 540-500m and 370-300m.





Weatherford®

Daily Activity Report

Day 26 - 2010/01/03

Drilling Services

V4.2.05/5

FILE #: 1010101
JOB TYPE:
RIG & NO: Hunt Energy 3

WELL NAME: Westwood # 1
COMPANY: Overseas Energy Holdings
SURFACE LOCATION: Haspden

SERVICE CO.: Precision Energy Services
SURVEY TYPE:
FIELD / LOCATION: Westwood / Tasmania / Australia

DIR Supervisor: Dan Power
MWD Supervisor: Clive Pickering, Faheem Khan

GROUND ELEV: 0 START DEPTH: 1679.0 PROGRESS: 0.0 DAILY COST: CAN\$0.00
KB ELEV: 0 END DEPTH: 1679.0 AVG. ROP.: 0.0 PREVIOUS COST: CAN\$0.00
TOTAL COST: CAN\$0.00

WORK STATUS: (All units are metric.)

TIME	DAILY ACTIVITY	HRS	DEPTH	BHA	TIME	DAILY ACTIVITY	HRS	DEPTH	BHA
00:00-24:00	Standby	24.00	1679	n/a			0.00		

TIME SUMMARY (hrs):					DRILLING PARAMETERS:				
MOTOR DRILL: 0.00	ORIENTING HRS: 0.00	ROTARY DRILL: 0.00	ROTARY TORQUE:	STRING WEIGHT 0					
TIME DRILL: 0.00	ROTATING HRS: 0.00	MOTOR HRS: 0.00	WOB SLIDING (HI): 0	WOB ROTATE (HI): 0					
MOTOR REAM: 0.00		TRIP: 0.00	WOB SLIDING (LO): 0	WOB ROTATE (LO): 0					
CIRC: 0.00	ROTARY DRILL: 0.00	OTHER: 24.00	RPM (ROTARY):	DRAG UP: 0					
MOTOR HRS: 0.00	DRILL HRS: 0.00	TOTAL HRS: 24.00	RPM (MOTOR):	DRAG DN: 0					

— BHA / MOTOR / BIT INFORMATION: —

BHA: HOLE SIZE: SECTION TYPE: SURVEY TYPE:
MANFCT.: STABILIZER: SERIAL#: MODEL: LOBE CFG:
SETTING: KICKPAD: SIZE: MTR HRS THIS DAY: MTR HRS TO DATE:
MANFCT: BIT TYPE: TYPE: NOZZLES:
IADC BIT GRADE:

— PUMP PARAMETERS —

PRESSURE ON BTM: 0 PRESSURE OFF BTM: 0 TOTAL FLOW RATE: 0.00
PUMP 1: TYPE: EFF.: 1.0% SPM: 0.00 LINER: 0.00 STROKE VOL.: 0.0000
PUMP 2: TYPE: EFF.: 100.0% SPM: 0.00 LINER: 0.00 STROKE VOL.: 0.0000
PUMP 3: TYPE: EFF.: 100.0% SPM: 0.00 LINER: 0.00 STROKE VOL.: 0.0000

— MUD RECORD —

MUD TYPE: VISC: 0 WTR LOSS: 0 PV: 0 YP: 0 pH: 0
DENSITY: 0 GEL @10: 0.00 SAND: 0 SOLIDS: 0 OIL: 0 TEMP: 0
LIQUID BASE: LIQUID RATE: 0 GAS TYPE: GAS RATE: 0

— COMMENTS: —

Standby waiting on decision from client. At 5pm we were told well was being suspended rig crew were being stood down and we were being released.



12 Weatherford Personnel on Location

Field Engineers	Clive Pickering Faheem Khan Bob Fleming Dan Power Ned Clarke	LWD/MWD Engineer LWD/MWD Engineer Directional Driller Directional Driller Directional Driller
-----------------	--	---

Weatherford International Contact Information

Field Operations	17 Truganina Road Malaga, WA 6000	Office: +61 8 9262 7100 Fax: +61 8 9249 8200
Sales Office	Level 7, 190 St George Terrace Perth, WA 6000 Australia	Office: +61 8 9346 5800 Fax: +61 8 9346 5888

